

Datasheet for ABIN7426961 anti-LOXL1 antibody (AA 369-574)



[Go to Product page](#)

2 Images

Overview

Quantity:	100 µL
Target:	LOXL1
Binding Specificity:	AA 369-574
Reactivity:	Human
Host:	Mouse
Clonality:	Monoclonal
Conjugate:	This LOXL1 antibody is un-conjugated
Application:	Western Blotting (WB), Immunohistochemistry (IHC), Immunoprecipitation (IP), Immunocytochemistry (ICC)

Product Details

Purpose:	Monoclonal Antibody to Lysyl Oxidase Like Protein 1 (LOXL1)
Immunogen:	Recombinant Lysyl Oxidase Like Protein 1 (LOXL1) corresponding to Leu369~Ser574 with N-terminal His Tag
Clone:	C1
Isotype:	IgG2a kappa
Specificity:	The antibody is a mouse monoclonal antibody raised against LOXL1. It has been selected for its ability to recognize LOXL1 in immunohistochemical staining and western blotting.
Cross-Reactivity:	Mouse, Pig, Rat
Purification:	Protein A + Protein G affinity chromatography

Target Details

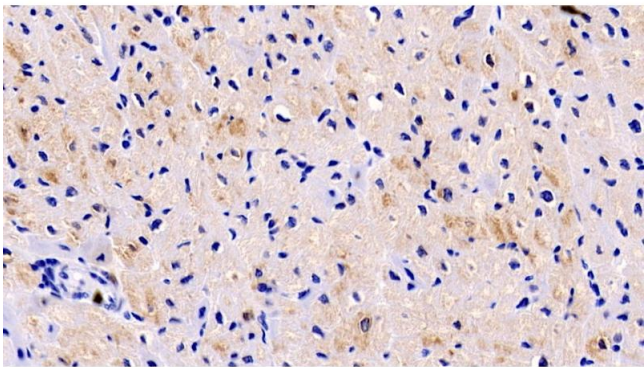
Target:	LOXL1
Alternative Name:	Lysyl Oxidase Like Protein 1 (LOXL1 Products)
Background:	LOL, LOXL, Lysyl oxidase homolog 1

Application Details

Application Notes:	Western blotting: 0.5-2 µg/mL Immunohistochemistry: 5-20 µg/mL Immunocytochemistry: 5-20 µg/mL Optimal working dilutions must be determined by end user.
Comment:	The thermal stability is described by the loss rate. The loss rate was determined by accelerated thermal degradation test, that is, incubate the protein at 37°C for 48h, and no obvious degradation and precipitation were observed. The loss rate is less than 5% within the expiration date under appropriate storage condition.
Restrictions:	For Research Use only

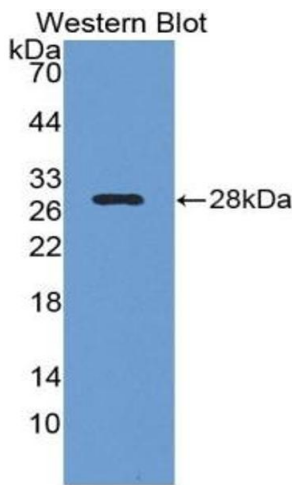
Handling

Format:	Liquid
Buffer:	PBS, pH 7.4, containing 0.02 % Sodium azide, 50 % glycerol.
Preservative:	Sodium azide
Precaution of Use:	This product contains Sodium azide: a POISONOUS AND HAZARDOUS SUBSTANCE which should be handled by trained staff only.
Storage:	4 °C, -20 °C
Storage Comment:	Store at 4°C for frequent use. Stored at -20°C in a manual defrost freezer for two year without detectable loss of activity. Avoid repeated freeze-thaw cycles.
Expiry Date:	24 months



Immunohistochemistry

Image 1. Detection of LOXL1 in Human Cardiac Muscle Tissue using Monoclonal Antibody to Lysyl Oxidase Like Protein 1 (LOXL1)



Western Blotting

Image 2. Detection of Recombinant LOXL1, Human using Monoclonal Antibody to Lysyl Oxidase Like Protein 1 (LOXL1)