

Datasheet for ABIN7426973

anti-SLC12A3 antibody (AA 3-146)



[Go to Product page](#)

1 Image

Overview

Quantity:	100 µL
Target:	SLC12A3
Binding Specificity:	AA 3-146
Reactivity:	Human
Host:	Mouse
Clonality:	Monoclonal
Conjugate:	This SLC12A3 antibody is un-conjugated
Application:	Western Blotting (WB)

Product Details

Purpose:	Monoclonal Antibody to Na-Cl Cotransporter (NCCT)
Immunogen:	Recombinant Na-Cl Cotransporter (NCCT) corresponding to Glu3~Cys146 with N-terminal His Tag
Clone:	C2
Isotype:	IgG2b kappa
Specificity:	The antibody is a mouse monoclonal antibody raised against NCCT. It has been selected for its ability to recognize NCCT in immunohistochemical staining and western blotting.
Cross-Reactivity:	Pig
Purification:	Protein A + Protein G affinity chromatography

Target Details

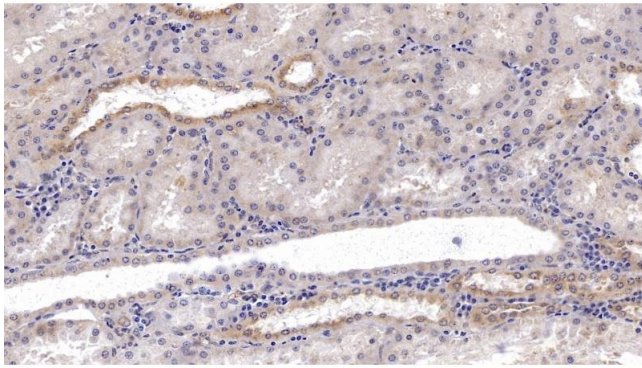
Target:	SLC12A3
Alternative Name:	NCCT (SLC12A3 Products)
Background:	SLC12A3, TSC, NCC, Solute Carrier Family 12 Member 3, Sodium/Chloride Transporters, Thiazide-sensitive sodium-chloride cotransporter, Na-Cl symporter
UniProt:	P55017

Application Details

Application Notes:	Western blotting: 0.01-2 µg/mL, Optimal working dilutions must be determined by end user.
Comment:	The thermal stability is described by the loss rate. The loss rate was determined by accelerated thermal degradation test, that is, incubate the protein at 37°C for 48h, and no obvious degradation and precipitation were observed. The loss rate is less than 5% within the expiration date under appropriate storage condition.
Restrictions:	For Research Use only

Handling

Format:	Liquid
Concentration:	1 mg/mL
Buffer:	0.01M PBS, pH 7.4, containing 0.05 % Proclin-300, 50 % glycerol.
Preservative:	ProClin
Precaution of Use:	This product contains ProClin: a POISONOUS AND HAZARDOUS SUBSTANCE which should be handled by trained staff only.
Storage:	4 °C, -20 °C
Storage Comment:	Store at 4°C for frequent use. Stored at -20°C in a manual defrost freezer for two year without detectable loss of activity. Avoid repeated freeze-thaw cycles.
Expiry Date:	24 months



Immunohistochemistry

Image 1. Detection of NCCT in Human Kidney Tissue using Monoclonal Antibody to Na-Cl Cotransporter (NCCT)