

Datasheet for ABIN7427135
anti-KPNA2 antibody (AA 157-412)

3 Images

[Go to Product page](#)

Overview

Quantity:	100 µL
Target:	KPNA2
Binding Specificity:	AA 157-412
Reactivity:	Human
Host:	Mouse
Clonality:	Monoclonal
Conjugate:	This KPNA2 antibody is un-conjugated
Application:	Western Blotting (WB), Immunohistochemistry (IHC), Immunoprecipitation (IP), Immunocytochemistry (ICC)

Product Details

Purpose:	Monoclonal Antibody to Karyopherin Alpha 2 (KPNa2)
Immunogen:	Recombinant Karyopherin Alpha 2 (KPNa2) corresponding to Ala157~Gln412 with N-terminal His Tag
Clone:	C18
Isotype:	IgG2a kappa
Specificity:	The antibody is a mouse monoclonal antibody raised against KPNa2. It has been selected for its ability to recognize KPNa2 in immunohistochemical staining and western blotting.
Cross-Reactivity:	Mouse, Rat
Purification:	Protein A + Protein G affinity chromatography

Target Details

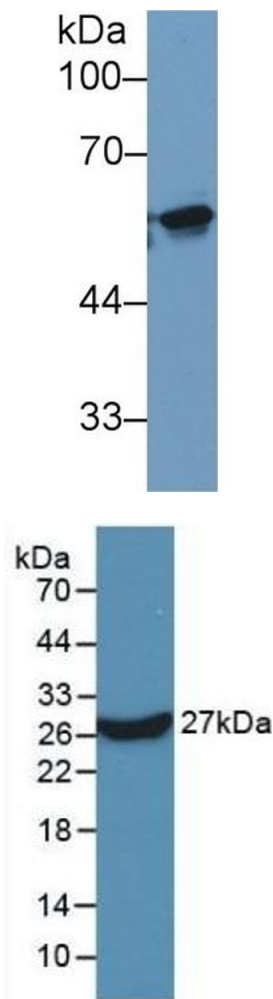
Target:	KPNA2
Alternative Name:	Karyopherin Alpha 2 (KPNA2 Products)
Background:	IPOA1, QIP2, RCH1, SRP1alpha, RAG Cohort 1, Importin Alpha 1, RAG cohort protein 1, SRP1-alpha
Pathways:	M Phase , Protein targeting to Nucleus

Application Details

Application Notes:	Western blotting: 0.5-5 µg/mL Immunohistochemistry: 5-30 µg/mL Immunocytochemistry: 5-30 µg/mL Optimal working dilutions must be determined by end user.
Comment:	The thermal stability is described by the loss rate. The loss rate was determined by accelerated thermal degradation test, that is, incubate the protein at 37°C for 48h, and no obvious degradation and precipitation were observed. The loss rate is less than 5% within the expiration date under appropriate storage condition.
Restrictions:	For Research Use only

Handling

Format:	Liquid
Buffer:	0.01M PBS, pH 7.4, containing 0.05 % Proclin-300, 50 % glycerol.
Preservative:	ProClin
Precaution of Use:	This product contains ProClin: a POISONOUS AND HAZARDOUS SUBSTANCE which should be handled by trained staff only.
Storage:	4 °C, -20 °C
Storage Comment:	Store at 4°C for frequent use. Stored at -20°C in a manual defrost freezer for two year without detectable loss of activity. Avoid repeated freeze-thaw cycles.
Expiry Date:	24 months

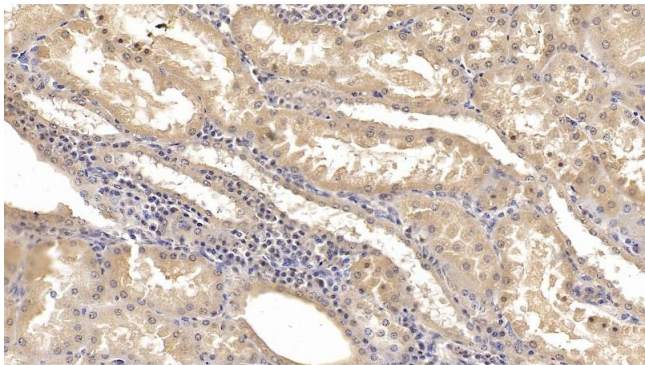


Western Blotting

Image 1. Detection of KPNa2 in Human 293T cell lysate using Monoclonal Antibody to Karyopherin Alpha 2 (KPNa2)

Western Blotting

Image 2. Detection of Recombinant KPNa2, Human using Monoclonal Antibody to Karyopherin Alpha 2 (KPNa2)



Immunohistochemistry

Image 3. Detection of KPNa2 in Human Kidney Tissue using Monoclonal Antibody to Karyopherin Alpha 2 (KPNa2)