

Datasheet for ABIN7427183
anti-MAPRE1 antibody (AA 2-268)[Go to Product page](#)

2 Images

Overview

Quantity:	100 µL
Target:	MAPRE1
Binding Specificity:	AA 2-268
Reactivity:	Human
Host:	Mouse
Clonality:	Monoclonal
Conjugate:	This MAPRE1 antibody is un-conjugated
Application:	Western Blotting (WB), Immunohistochemistry (IHC), Immunoprecipitation (IP), Immunocytochemistry (ICC)

Product Details

Purpose:	Monoclonal Antibody to Microtubule Associated Protein RP/EB Family, Member 1 (MAPRE1)
Immunogen:	Recombinant Microtubule Associated Protein RP/EB Family, Member 1 (MAPRE1) corresponding to Ala2~Tyr268 (Accession # Q15691)
Clone:	C9
Isotype:	IgG1 kappa
Specificity:	The antibody is a mouse monoclonal antibody raised against MAPRE1. It has been selected for its ability to recognize MAPRE1 in immunohistochemical staining and western blotting.
Cross-Reactivity:	Pig, Rat
Purification:	Protein A + Protein G affinity chromatography

Target Details

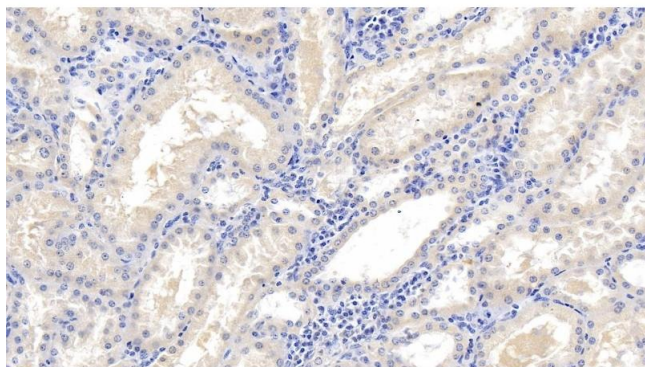
Target:	MAPRE1
Alternative Name:	Microtubule Associated Protein RP/EB Family, Member 1 (MAPRE1 Products)
Background:	EB1, Adenomatous Polyposis Coli-Binding protein, APC-binding protein EB1, End-binding protein 1
Pathways:	M Phase

Application Details

Application Notes:	Western blotting: 0.2-2 µg/mL 1:500-5000 Immunohistochemistry: 5-20 µg/mL 1:50-200 Immunocytochemistry: 5-20 µg/mL 1:50-200 Optimal working dilutions must be determined by end user.
Comment:	The thermal stability is described by the loss rate. The loss rate was determined by accelerated thermal degradation test, that is, incubate the protein at 37°C for 48h, and no obvious degradation and precipitation were observed. The loss rate is less than 5% within the expiration date under appropriate storage condition.
Restrictions:	For Research Use only

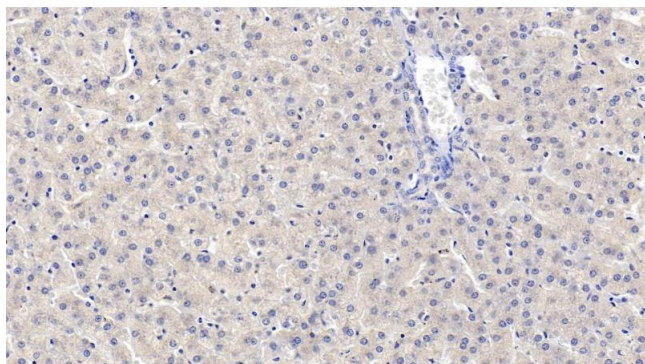
Handling

Format:	Liquid
Buffer:	PBS, pH 7.4, containing 0.02 % Sodium azide, 50 % glycerol.
Preservative:	Sodium azide
Precaution of Use:	This product contains Sodium azide: a POISONOUS AND HAZARDOUS SUBSTANCE which should be handled by trained staff only.
Storage:	4 °C,-20 °C
Storage Comment:	Store at 4°C for frequent use. Stored at -20°C in a manual defrost freezer for two year without detectable loss of activity. Avoid repeated freeze-thaw cycles.
Expiry Date:	24 months



Immunohistochemistry

Image 1. Detection of MAPRE1 in Human Kidney Tissue using Monoclonal Antibody to Microtubule Associated Protein RP/EB Family, Member 1 (MAPRE1)



Immunohistochemistry

Image 2. Detection of MAPRE1 in Human Liver Tissue using Monoclonal Antibody to Microtubule Associated Protein RP/EB Family, Member 1 (MAPRE1)