

Datasheet for ABIN7427189
anti-GPR35 antibody (AA 240-309)[Go to Product page](#)

1 Image

Overview

Quantity:	100 µL
Target:	GPR35
Binding Specificity:	AA 240-309
Reactivity:	Human
Host:	Mouse
Clonality:	Monoclonal
Conjugate:	This GPR35 antibody is un-conjugated
Application:	Western Blotting (WB), Immunohistochemistry (IHC), Immunocytochemistry (ICC), Immunoprecipitation (IP)

Product Details

Purpose:	Monoclonal Antibody to G Protein Coupled Receptor 35 (GPR35)
Immunogen:	Recombinant G Protein Coupled Receptor 35 (GPR35) corresponding to Arg240~Ala309 with N-terminal His and GST Tag
Clone:	C3
Isotype:	IgG1 kappa
Specificity:	The antibody is a mouse monoclonal antibody raised against GPR35. It has been selected for its ability to recognize GPR35 in immunohistochemical staining and western blotting.
Purification:	Protein A + Protein G affinity chromatography

Target Details

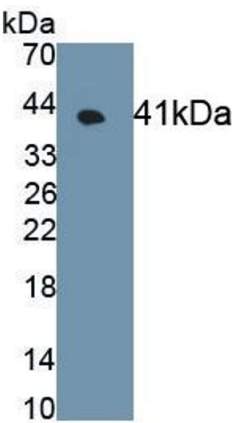
Target:	GPR35
Alternative Name:	G Protein Coupled Receptor 35 (GPR35 Products)
Background:	KYNA receptor, Kynurenic acid receptor

Application Details

Application Notes:	Western blotting: 0.5-2 µg/mL Immunohistochemistry: 5-20 µg/mL Immunocytochemistry: 5-20 µg/mL Optimal working dilutions must be determined by end user.
Comment:	The thermal stability is described by the loss rate. The loss rate was determined by accelerated thermal degradation test, that is, incubate the protein at 37°C for 48h, and no obvious degradation and precipitation were observed. The loss rate is less than 5% within the expiration date under appropriate storage condition.
Restrictions:	For Research Use only

Handling

Format:	Liquid
Buffer:	PBS, pH 7.4, containing 0.02 % Sodium azide, 50 % glycerol.
Preservative:	Sodium azide
Precaution of Use:	This product contains Sodium azide: a POISONOUS AND HAZARDOUS SUBSTANCE which should be handled by trained staff only.
Storage:	4 °C,-20 °C
Storage Comment:	Store at 4°C for frequent use. Stored at -20°C in a manual defrost freezer for two year without detectable loss of activity. Avoid repeated freeze-thaw cycles.
Expiry Date:	24 months



Western Blotting

Image 1. Detection of Recombinant GPR35, Human using Monoclonal Antibody to G Protein Coupled Receptor 35 (GPR35)