

Datasheet for ABIN7427228  
**anti-FSTL1 antibody (AA 21-308)**

## 2 Images

[Go to Product page](#)

## Overview

Quantity:	100 µL
Target:	FSTL1
Binding Specificity:	AA 21-308
Reactivity:	Human
Host:	Mouse
Clonality:	Monoclonal
Conjugate:	This FSTL1 antibody is un-conjugated
Application:	Western Blotting (WB), Immunohistochemistry (IHC), Immunoprecipitation (IP), Immunocytochemistry (ICC)

## Product Details

Purpose:	Monoclonal Antibody to Follistatin Like Protein 1 (FSTL1)
Immunogen:	Recombinant Follistatin Like Protein 1 (FSTL1) corresponding to Glu21~Ile308
Clone:	C16
Isotype:	IgG1 kappa
Specificity:	The antibody is a mouse monoclonal antibody raised against FSTL1. It has been selected for its ability to recognize FSTL1 in immunohistochemical staining and western blotting.
Cross-Reactivity:	Pig
Purification:	Protein A + Protein G affinity chromatography

## Target Details

Target:	FSTL1
Alternative Name:	Follistatin Like Protein 1 ( <a href="#">FSTL1 Products</a> )
Background:	FRP, FSL1, Follistatin-related protein 1

## Application Details

Application Notes:	Western blotting: 0.5-2 µg/mL Immunohistochemistry: 5-20 µg/mL Immunocytochemistry: 5-20 µg/mL Optimal working dilutions must be determined by end user.
Comment:	The thermal stability is described by the loss rate. The loss rate was determined by accelerated thermal degradation test, that is, incubate the protein at 37°C for 48h, and no obvious degradation and precipitation were observed. The loss rate is less than 5% within the expiration date under appropriate storage condition.
Restrictions:	For Research Use only

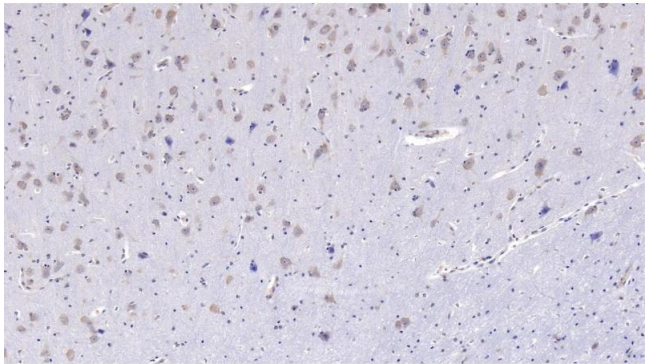
## Handling

Format:	Liquid
Buffer:	0.01M PBS, pH 7.4, containing 0.05 % Proclin-300, 50 % glycerol.
Preservative:	ProClin
Precaution of Use:	This product contains ProClin: a POISONOUS AND HAZARDOUS SUBSTANCE which should be handled by trained staff only.
Storage:	4 °C,-20 °C
Storage Comment:	Store at 4°C for frequent use. Stored at -20°C in a manual defrost freezer for two year without detectable loss of activity. Avoid repeated freeze-thaw cycles.
Expiry Date:	24 months



Western Blotting

**Image 1.** Detection of FSTL1 in Human Placenta lysate using Monoclonal Antibody to Follistatin Like Protein 1 (FSTL1)



Immunohistochemistry

**Image 2.** Detection of FSTL1 in Human Cerebrum Tissue using Monoclonal Antibody to Follistatin Like Protein 1 (FSTL1)