



[Go to Product page](#)

Datasheet for ABIN7427255
anti-ERLIN2 antibody (AA 47-339)

3 Images

Overview

| | |
|----------------------|--|
| Quantity: | 100 µL |
| Target: | ERLIN2 |
| Binding Specificity: | AA 47-339 |
| Reactivity: | Human |
| Host: | Mouse |
| Clonality: | Monoclonal |
| Conjugate: | This ERLIN2 antibody is un-conjugated |
| Application: | Western Blotting (WB), Immunohistochemistry (IHC), Immunoprecipitation (IP), Immunocytochemistry (ICC) |

Product Details

| | |
|-------------------|---|
| Purpose: | Monoclonal Antibody to Endoplasmic Reticulum Lipid Raft Associated Protein 2 (ERLIN2) |
| Immunogen: | Recombinant Endoplasmic Reticulum Lipid Raft Associated Protein 2 (ERLIN2) corresponding to Pro47~Asn339 with N-terminal His Tag |
| Clone: | C2 |
| Isotype: | IgG2a lambda |
| Specificity: | The antibody is a mouse monoclonal antibody raised against ERLIN2. It has been selected for its ability to recognize ERLIN2 in immunohistochemical staining and western blotting. |
| Cross-Reactivity: | Pig |
| Purification: | Protein A + Protein G affinity chromatography |

Target Details

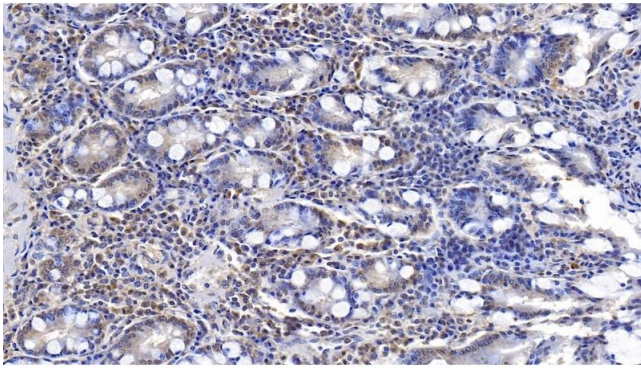
| | |
|-------------------|---|
| Target: | ERLIN2 |
| Alternative Name: | Endoplasmic Reticulum Lipid Raft Associated Protein 2 (ERLIN2 Products) |
| Background: | Erlin-2, SPFH2, NET32, C8orf2, ER Lipid Raft Associated Protein 2, Stomatin-prohibitin-flotillin-HflC/K domain-containing protein 2 |

Application Details

| | |
|--------------------|---|
| Application Notes: | Western blotting: 0.5-2 µg/mL 1:500-2000 Immunohistochemistry: 5-20 µg/mL 1:50-200 Immunocytochemistry: 5-20 µg/mL 1:50-200 Optimal working dilutions must be determined by end user. |
| Comment: | The thermal stability is described by the loss rate. The loss rate was determined by accelerated thermal degradation test, that is, incubate the protein at 37°C for 48h, and no obvious degradation and precipitation were observed. The loss rate is less than 5% within the expiration date under appropriate storage condition. |
| Restrictions: | For Research Use only |

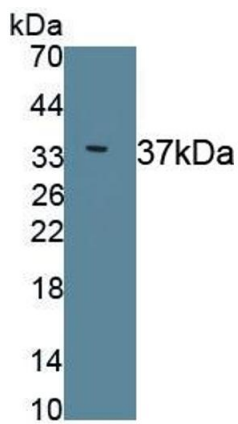
Handling

| | |
|--------------------|---|
| Format: | Liquid |
| Buffer: | PBS, pH 7.4, containing 0.02 % Sodium azide, 50 % glycerol. |
| Preservative: | Sodium azide |
| Precaution of Use: | This product contains Sodium azide: a POISONOUS AND HAZARDOUS SUBSTANCE which should be handled by trained staff only. |
| Storage: | 4 °C, -20 °C |
| Storage Comment: | Store at 4°C for frequent use. Stored at -20°C in a manual defrost freezer for two year without detectable loss of activity. Avoid repeated freeze-thaw cycles. |
| Expiry Date: | 24 months |



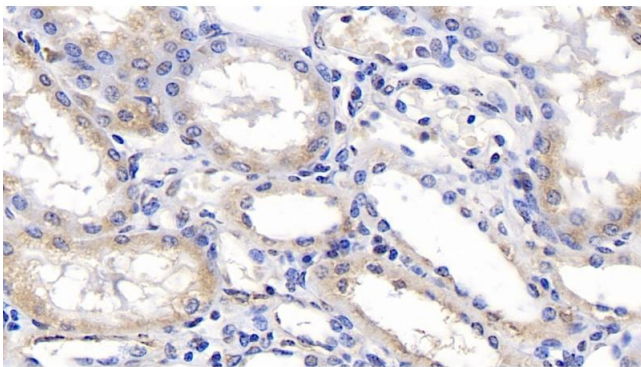
Immunohistochemistry

Image 1. Detection of ERLIN2 in Human Small intestine Tissue using Monoclonal Antibody to Endoplasmic Reticulum Lipid Raft Associated Protein 2 (ERLIN2)



Western Blotting

Image 2. Detection of Recombinant ERLIN2, Human using Monoclonal Antibody to Endoplasmic Reticulum Lipid Raft Associated Protein 2 (ERLIN2)



Immunohistochemistry

Image 3. Detection of ERLIN2 in Human Kidney Tissue using Monoclonal Antibody to Endoplasmic Reticulum Lipid Raft Associated Protein 2 (ERLIN2)