

Datasheet for ABIN7427285  
**anti-CKM antibody (AA 11-367)**



[Go to Product page](#)

1 Image

## Overview

Quantity:	100 µL
Target:	CKM
Binding Specificity:	AA 11-367
Reactivity:	Rabbit
Host:	Mouse
Clonality:	Monoclonal
Conjugate:	This CKM antibody is un-conjugated
Application:	Western Blotting (WB), Immunohistochemistry (IHC), Immunoprecipitation (IP), Immunocytochemistry (ICC)

## Product Details

Purpose:	Monoclonal Antibody to Creatine Kinase, Muscle (CKM)
Immunogen:	Recombinant Creatine Kinase, Muscle (CKM) corresponding to Lys11~Leu367 with N-terminal His Tag
Clone:	C3
Isotype:	IgG2b kappa
Specificity:	The antibody is a mouse monoclonal antibody raised against CKM. It has been selected for its ability to recognize CKM in immunohistochemical staining and western blotting.
Purification:	Protein A + Protein G affinity chromatography

## Target Details

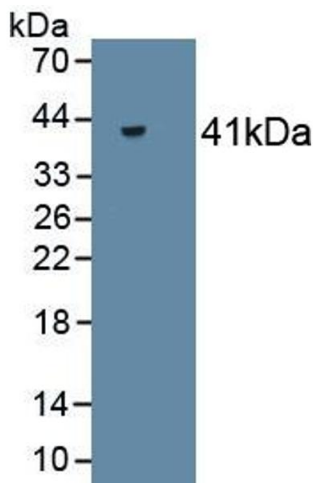
Target:	CKM
Alternative Name:	Creatine Kinase, Muscle ( <a href="#">CKM Products</a> )
Background:	CK-MM, CKMM, CK3, CK-M, MM-CK, M-CK, Creatine kinase M-type, N-terminally processed
UniProt:	<a href="#">P00563</a>

## Application Details

Application Notes:	Western blotting: 0.01-2 µg/mL, Immunohistochemistry: 5-20 µg/mL, Immunocytochemistry: 5-20 µg/mL, Optimal working dilutions must be determined by end user.
Comment:	The thermal stability is described by the loss rate. The loss rate was determined by accelerated thermal degradation test, that is, incubate the protein at 37°C for 48h, and no obvious degradation and precipitation were observed. The loss rate is less than 5% within the expiration date under appropriate storage condition.
Restrictions:	For Research Use only

## Handling

Format:	Liquid
Concentration:	0.75 mg/mL
Buffer:	0.01M PBS, pH 7.4, containing 0.05 % Proclin-300, 50 % glycerol.
Preservative:	ProClin
Precaution of Use:	This product contains ProClin: a POISONOUS AND HAZARDOUS SUBSTANCE which should be handled by trained staff only.
Storage:	4 °C, -20 °C
Storage Comment:	Store at 4°C for frequent use. Stored at -20°C in a manual defrost freezer for two year without detectable loss of activity. Avoid repeated freeze-thaw cycles.
Expiry Date:	24 months



Western Blotting

**Image 1.** Detection of Recombinant CKM, Rabbit using Monoclonal Antibody to Creatine Kinase, Muscle (CKM)