

Datasheet for ABIN7427324

anti-Trypsin antibody

3 Images

[Go to Product page](#)

Overview

Quantity:	100 µL
Target:	Trypsin
Reactivity:	Pig
Host:	Mouse
Clonality:	Monoclonal
Conjugate:	This Trypsin antibody is un-conjugated
Application:	Western Blotting (WB), Immunohistochemistry (IHC), Immunoprecipitation (IP), Immunocytochemistry (ICC)

Product Details

Purpose:	Monoclonal Antibody to Trypsin (TRY)
Immunogen:	Native Trypsin (TRY)
Clone:	C3
Isotype:	IgG1 kappa
Specificity:	The antibody is a mouse monoclonal antibody raised against TRY. It has been selected for its ability to recognize TRY in immunohistochemical staining and western blotting.
Purification:	Protein A + Protein G affinity chromatography

Target Details

Target:	Trypsin
---------	---------

Target Details

Abstract: [Trypsin Products](#)

Application Details

Application Notes: Western blotting: 0.5-3 µg/mL
Immunohistochemistry: 5-30 µg/mL
Immunocytochemistry: 5-30 µg/mL
Optimal working dilutions must be determined by end user.

Comment: The thermal stability is described by the loss rate. The loss rate was determined by accelerated thermal degradation test, that is, incubate the protein at 37°C for 48h, and no obvious degradation and precipitation were observed. The loss rate is less than 5% within the expiration date under appropriate storage condition.

Restrictions: For Research Use only

Handling

Format: Liquid

Buffer: 0.01M PBS, pH 7.4, containing 0.05 % Proclin-300, 50 % glycerol.

Preservative: ProClin

Precaution of Use: This product contains ProClin: a POISONOUS AND HAZARDOUS SUBSTANCE which should be handled by trained staff only.

Storage: 4 °C, -20 °C

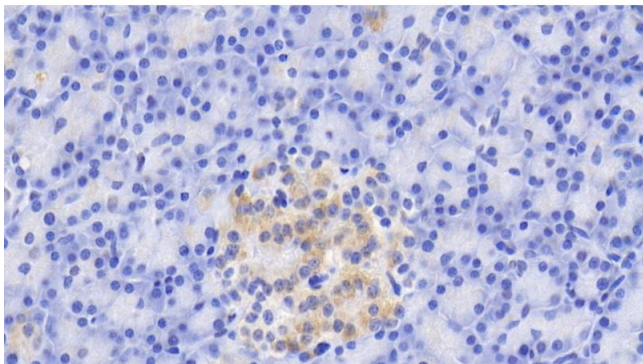
Storage Comment: Store at 4°C for frequent use. Stored at -20°C in a manual defrost freezer for two year without detectable loss of activity. Avoid repeated freeze-thaw cycles.

Expiry Date: 24 months



Western Blotting

Image 1. Detection of TRY in Porcine Pancreas lysate using Monoclonal Antibody to Trypsin (TRY)



Immunohistochemistry

Image 2. Detection of TRY in Porcine Pancreas Tissue using Monoclonal Antibody to Trypsin (TRY)



Western Blotting

Image 3. Detection of TRY in Human PANC1 cell lysate using Monoclonal Antibody to Trypsin (TRY)