

Datasheet for ABIN7427354  
**anti-LTBR antibody (AA 66-215)**

## 2 Images

[Go to Product page](#)

## Overview

Quantity:	100 µL
Target:	LTBR
Binding Specificity:	AA 66-215
Reactivity:	Human
Host:	Mouse
Clonality:	Monoclonal
Conjugate:	This LTBR antibody is un-conjugated
Application:	Western Blotting (WB), Immunohistochemistry (IHC), Immunoprecipitation (IP), Immunocytochemistry (ICC)

## Product Details

Purpose:	Monoclonal Antibody to Lymphotoxin Beta Receptor (LTbR)
Immunogen:	Recombinant Lymphotoxin Beta Receptor (LTbR) corresponding to Thr66~Glu215 (Accession # P36941)
Clone:	C1
Isotype:	IgG2b lambda
Specificity:	The antibody is a mouse monoclonal antibody raised against LTbR. It has been selected for its ability to recognize LTbR in immunohistochemical staining and western blotting.
Purification:	Protein A + Protein G affinity chromatography

## Target Details

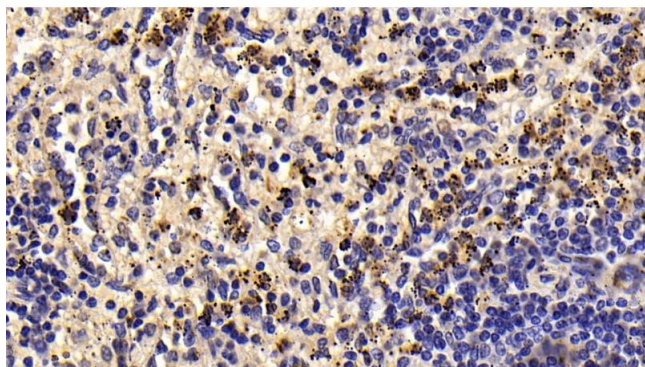
Target:	LTBR
Alternative Name:	Lymphotoxin Beta Receptor ( <a href="#">LTBR Products</a> )
Background:	TNFCR, TNFR-RP, TNFR-III, TNFR2-RP, TNFRSF3, Tumor Necrosis Factor Superfamily Member 3, Tumor necrosis factor C receptor, Tumor necrosis factor receptor type III
Pathways:	<a href="#">NF-kappaB Signaling</a>

## Application Details

Application Notes:	Western blotting: 0.5-2 µg/mL Immunohistochemistry: 5-20 µg/mL Immunocytochemistry: 5-20 µg/mL Optimal working dilutions must be determined by end user.
Comment:	The thermal stability is described by the loss rate. The loss rate was determined by accelerated thermal degradation test, that is, incubate the protein at 37°C for 48h, and no obvious degradation and precipitation were observed. The loss rate is less than 5% within the expiration date under appropriate storage condition.
Restrictions:	For Research Use only

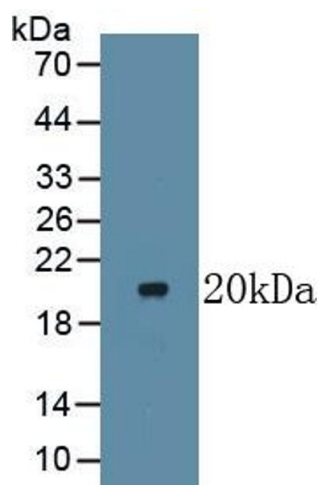
## Handling

Format:	Liquid
Buffer:	PBS, pH 7.4, containing 0.02 % Sodium azide, 50 % glycerol.
Preservative:	Sodium azide
Precaution of Use:	This product contains Sodium azide: a POISONOUS AND HAZARDOUS SUBSTANCE which should be handled by trained staff only.
Storage:	4 °C,-20 °C
Storage Comment:	Store at 4°C for frequent use. Stored at -20°C in a manual defrost freezer for two year without detectable loss of activity. Avoid repeated freeze-thaw cycles.
Expiry Date:	24 months



#### Immunohistochemistry

**Image 1.** Detection of LTbR in Human Spleen Tissue using Monoclonal Antibody to Lymphotoxin Beta Receptor (LTbR)



#### Western Blotting

**Image 2.** Detection of Recombinant LTbR, Human using Monoclonal Antibody to Lymphotoxin Beta Receptor (LTbR)