

Datasheet for ABIN7427462  
**anti-Ceruloplasmin antibody (AA 872-1059)**[Go to Product page](#)

## 1 Image

## Overview

|                      |   |
|----------------------|---|
| Quantity:            | 100 µL  |
| Target:              | Ceruloplasmin (CP)  |
| Binding Specificity: | AA 872-1059   |
| Reactivity:          | Rat   |
| Host:                | Mouse   |
| Clonality:           | Monoclonal  |
| Conjugate:           | This Ceruloplasmin antibody is un-conjugated  |
| Application:         | Western Blotting (WB), Immunohistochemistry (IHC), Immunoprecipitation (IP),<br>Immunocytochemistry (ICC) |

## Product Details

|               |   |
|---------------|---|
| Purpose:      | Monoclonal Antibody to Ceruloplasmin (CP)   |
| Immunogen:    | Recombinant Ceruloplasmin (CP) corresponding to Ala872~Gly1059 with N-terminal His Tag  |
| Clone:        | 11#   |
| Isotype:      | IgG2a kappa   |
| Specificity:  | The antibody is a mouse monoclonal antibody raised against CP. It has been selected for its ability to recognize CP in immunohistochemical staining and western blotting. |
| Purification: | Protein A + Protein G affinity chromatography   |

## Target Details

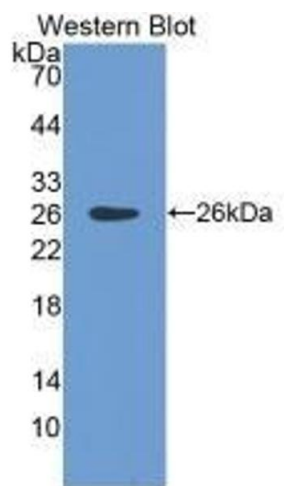
|                   |  |
|-------------------|--|
| Target:           | Ceruloplasmin (CP)   |
| Alternative Name: | Ceruloplasmin ( <a href="#">CP Products</a> )                |
| Background:       | CP2, CER, Caeruloplasmin, Ferroxidase, Oxygen Oxidoreductase |
| Pathways:         | <a href="#">Transition Metal Ion Homeostasis</a>             |

## Application Details

|                    |   |
|--------------------|---|
| Application Notes: | Western blotting: 0.5-5 µg/mL Immunocytochemistry in formalin fixed cells: 5-30 µg/mL Immunohistochemistry in formalin fixed frozen section: 5-30 µg/mL Immunohistochemistry in paraffin section: 5-30 µg/mL Enzyme-linked Immunosorbent Assay: 0.05-2 µg/mL Optimal working dilutions must be determined by end user.              |
| Comment:           | The thermal stability is described by the loss rate. The loss rate was determined by accelerated thermal degradation test, that is, incubate the protein at 37°C for 48h, and no obvious degradation and precipitation were observed. The loss rate is less than 5% within the expiration date under appropriate storage condition. |
| Restrictions:      | For Research Use only   |

## Handling

|                    |   |
|--------------------|---|
| Format:            | Liquid  |
| Buffer:            | PBS, pH 7.4, containing 0.02 % Sodium azide, 50 % glycerol.   |
| Preservative:      | Sodium azide  |
| Precaution of Use: | This product contains Sodium azide: a POISONOUS AND HAZARDOUS SUBSTANCE which should be handled by trained staff only.  |
| Storage:           | 4 °C,-20 °C   |
| Storage Comment:   | Store at 4°C for frequent use. Stored at -20°C in a manual defrost freezer for two year without detectable loss of activity. Avoid repeated freeze-thaw cycles. |
| Expiry Date:       | 24 months   |



Western Blotting

**Image 1.** Detection of Recombinant Ceruloplasmin, Rat using Monoclonal Antibody to Ceruloplasmin (CP)