

Datasheet for ABIN7427531  
**anti-LRG1 antibody (AA 154-332)**[Go to Product page](#)

## 4 Images

## Overview

Quantity:	100 µL
Target:	LRG1
Binding Specificity:	AA 154-332
Reactivity:	Rat
Host:	Mouse
Clonality:	Monoclonal
Conjugate:	This LRG1 antibody is un-conjugated
Application:	Western Blotting (WB), Immunohistochemistry (IHC), Immunoprecipitation (IP), Immunocytochemistry (ICC)

## Product Details

Purpose:	Monoclonal Antibody to Leucine Rich Alpha-2-Glycoprotein 1 (LRG1)
Immunogen:	Recombinant Leucine Rich Alpha-2-Glycoprotein 1 (LRG1) corresponding to Leu154~Leu332 with N-terminal His and GST Tag
Clone:	C1
Isotype:	IgG2b kappa
Specificity:	The antibody is a mouse monoclonal antibody raised against LRG1. It has been selected for its ability to recognize LRG1 in immunohistochemical staining and western blotting.
Purification:	Protein A + Protein G affinity chromatography

## Target Details

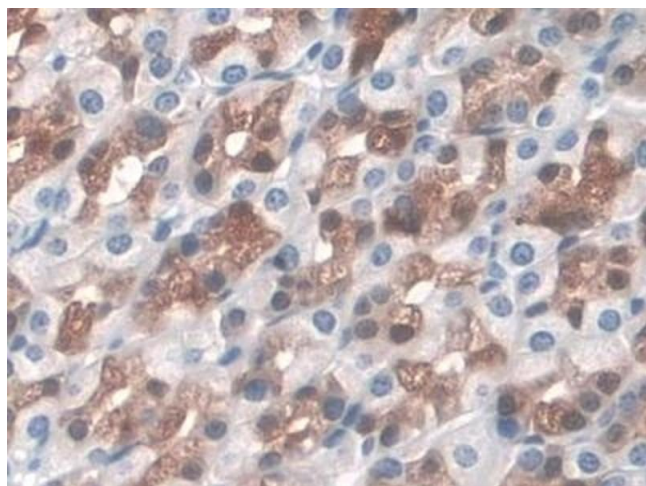
Target:	LRG1
Alternative Name:	Leucine Rich Alpha-2-Glycoprotein 1 ( <a href="#">LRG1 Products</a> )
Pathways:	<a href="#">Brown Fat Cell Differentiation</a>

## Application Details

Application Notes:	Western blotting: 0.5-5 µg/mL Immunocytochemistry in formalin fixed cells: 5-30 µg/mL Immunohistochemistry in formalin fixed frozen section: 5-30 µg/mL Immunohistochemistry in paraffin section: 5-30 µg/mL Enzyme-linked Immunosorbent Assay: 0.05-2 µg/mL Optimal working dilutions must be determined by end user.
Comment:	The thermal stability is described by the loss rate. The loss rate was determined by accelerated thermal degradation test, that is, incubate the protein at 37°C for 48h, and no obvious degradation and precipitation were observed. The loss rate is less than 5% within the expiration date under appropriate storage condition.
Restrictions:	For Research Use only

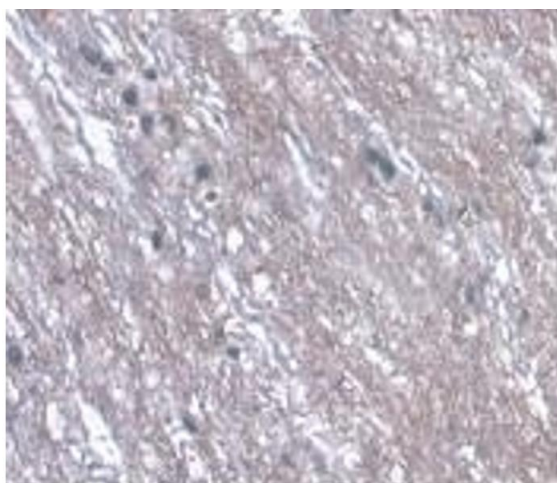
## Handling

Format:	Liquid
Buffer:	PBS, pH 7.4, containing 0.02 % Sodium azide, 50 % glycerol.
Preservative:	Sodium azide
Precaution of Use:	This product contains Sodium azide: a POISONOUS AND HAZARDOUS SUBSTANCE which should be handled by trained staff only.
Storage:	4 °C,-20 °C
Storage Comment:	Store at 4°C for frequent use. Stored at -20°C in a manual defrost freezer for two year without detectable loss of activity. Avoid repeated freeze-thaw cycles.
Expiry Date:	24 months



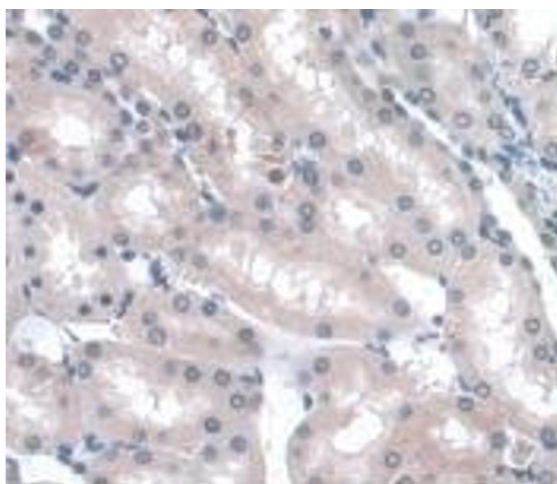
#### Immunohistochemistry

**Image 1.** Detection of LRG1 in Rat Stomach Tissue using Monoclonal Antibody to Leucine Rich Alpha-2-Glycoprotein 1 (LRG1)



#### Immunohistochemistry

**Image 2.** Detection of LRG1 in Rat Spinal Cord Tissue using Monoclonal Antibody to Leucine Rich Alpha-2-Glycoprotein 1 (LRG1)



#### Immunohistochemistry

**Image 3.** Detection of LRG1 in Rat Kidney Tissue using Monoclonal Antibody to Leucine Rich Alpha-2-Glycoprotein 1 (LRG1)

Please check the [product details page](#) for more images. Overall 4 images are available for ABIN7427531.