

Datasheet for ABIN7427642
anti-SIGLEC10 antibody (AA 571-697)[Go to Product page](#)

3 Images

Overview

Quantity:	100 µL
Target:	SIGLEC10
Binding Specificity:	AA 571-697
Reactivity:	Human
Host:	Mouse
Clonality:	Monoclonal
Conjugate:	This SIGLEC10 antibody is un-conjugated
Application:	Western Blotting (WB), Immunohistochemistry (IHC), Immunoprecipitation (IP), Immunocytochemistry (ICC)

Product Details

Purpose:	Monoclonal Antibody to Sialic Acid Binding Ig Like Lectin 10 (SIGLEC10)
Immunogen:	Recombinant Sialic Acid Binding Ig Like Lectin 10 (SIGLEC10) corresponding to Met571~Gln697 with N-terminal His Tag
Clone:	C5
Isotype:	IgG1 kappa
Specificity:	The antibody is a mouse monoclonal antibody raised against SIGLEC10. It has been selected for its ability to recognize SIGLEC10 in immunohistochemical staining and western blotting.
Cross-Reactivity:	Pig
Purification:	Protein A + Protein G affinity chromatography

Target Details

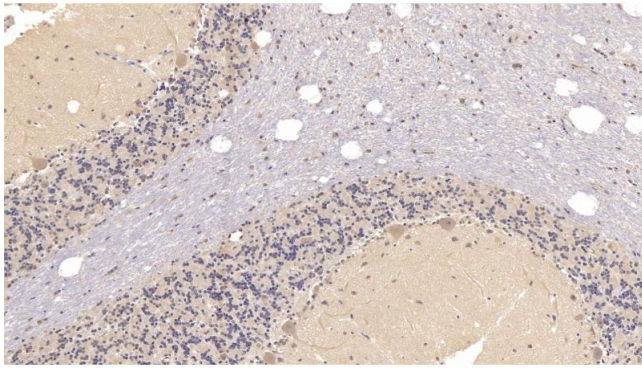
Target:	SIGLEC10
Alternative Name:	Sialic Acid Binding Ig Like Lectin 10 (SIGLEC10 Products)
Background:	PRO940, SLG2, Sialic Acid Binding Ig-Like Lectin 10 Ig-Like Lectin 7, Siglec-Like Gene 2

Application Details

Application Notes:	Western blotting: 0.5-5 µg/mL Immunohistochemistry: 5-30 µg/mL Immunocytochemistry: 5-30 µg/mL Optimal working dilutions must be determined by end user.
Comment:	The thermal stability is described by the loss rate. The loss rate was determined by accelerated thermal degradation test, that is, incubate the protein at 37°C for 48h, and no obvious degradation and precipitation were observed. The loss rate is less than 5% within the expiration date under appropriate storage condition.
Restrictions:	For Research Use only

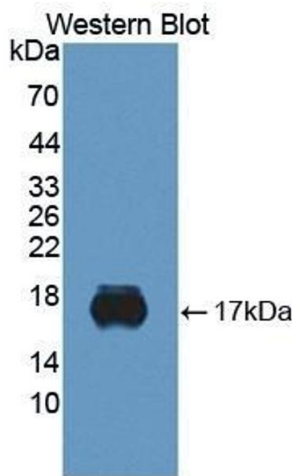
Handling

Format:	Liquid
Buffer:	PBS, pH 7.4, containing 0.02 % Sodium azide, 50 % glycerol.
Preservative:	Sodium azide
Precaution of Use:	This product contains Sodium azide: a POISONOUS AND HAZARDOUS SUBSTANCE which should be handled by trained staff only.
Storage:	4 °C, -20 °C
Storage Comment:	Store at 4°C for frequent use. Stored at -20°C in a manual defrost freezer for two year without detectable loss of activity. Avoid repeated freeze-thaw cycles.
Expiry Date:	24 months



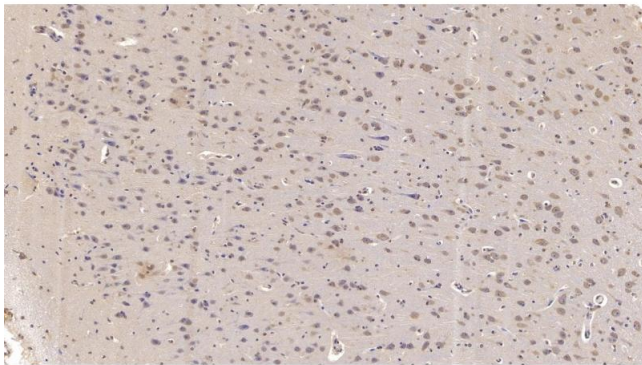
Immunohistochemistry

Image 1. Detection of SIGLEC10 in Human Cerebellum Tissue using Monoclonal Antibody to Sialic Acid Binding Ig Like Lectin 10 (SIGLEC10)



Western Blotting

Image 2. Detection of Recombinant SIGLEC10, Human using Monoclonal Antibody to Sialic Acid Binding Ig Like Lectin 10 (SIGLEC10)



Immunohistochemistry

Image 3. Detection of SIGLEC10 in Human Cerebrum Tissue using Monoclonal Antibody to Sialic Acid Binding Ig Like Lectin 10 (SIGLEC10)