

Datasheet for ABIN7427648
anti-Complement C4c antibody (AA 19-333)[Go to Product page](#)

1 Image

Overview

Quantity:	100 µL
Target:	Complement C4c (C4c)
Binding Specificity:	AA 19-333
Reactivity:	Human
Host:	Mouse
Clonality:	Monoclonal
Conjugate:	This Complement C4c antibody is un-conjugated
Application:	Western Blotting (WB), Immunohistochemistry (IHC), Immunoprecipitation (IP), Immunocytochemistry (ICC)

Product Details

Purpose:	Monoclonal Antibody to Complement Component 4c (C4c)
Immunogen:	Recombinant Complement Component 4c (C4c) corresponding to Gln19~Leu333 with N-terminal His Tag
Clone:	C1
Isotype:	IgG1 kappa
Specificity:	The antibody is a mouse monoclonal antibody raised against C4c. It has been selected for its ability to recognize C4c in immunohistochemical staining and western blotting.
Purification:	Protein A + Protein G affinity chromatography

Target Details

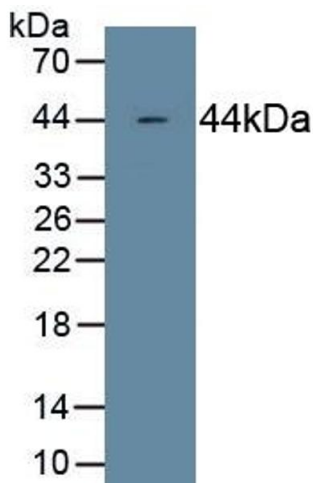
Target:	Complement C4c (C4c)
Alternative Name:	Complement Component 4c (C4c Products)

Application Details

Application Notes:	Western blotting: 0.5-2 µg/mL 1:500-2000 Immunohistochemistry: 5-20 µg/mL 1:50-200 Immunocytochemistry: 5-20 µg/mL 1:50-200 Optimal working dilutions must be determined by end user.
Comment:	The thermal stability is described by the loss rate. The loss rate was determined by accelerated thermal degradation test, that is, incubate the protein at 37°C for 48h, and no obvious degradation and precipitation were observed. The loss rate is less than 5% within the expiration date under appropriate storage condition.
Restrictions:	For Research Use only

Handling

Format:	Liquid
Buffer:	0.01M PBS, pH 7.4, containing 0.05 % Proclin-300, 50 % glycerol.
Preservative:	ProClin
Precaution of Use:	This product contains ProClin: a POISONOUS AND HAZARDOUS SUBSTANCE which should be handled by trained staff only.
Storage:	4 °C,-20 °C
Storage Comment:	Store at 4°C for frequent use. Stored at -20°C in a manual defrost freezer for two year without detectable loss of activity. Avoid repeated freeze-thaw cycles.
Expiry Date:	24 months



Western Blotting

Image 1. Detection of Recombinant C4c, Human using Monoclonal Antibody to Complement Component 4c (C4c)