

Datasheet for ABIN7427672  
**anti-RBP2 antibody (AA 1-134)**

## 2 Images

[Go to Product page](#)

## Overview

|                      |   |
|----------------------|---|
| Quantity:            | 100 µL  |
| Target:              | RBP2  |
| Binding Specificity: | AA 1-134  |
| Reactivity:          | Human   |
| Host:                | Mouse   |
| Clonality:           | Monoclonal  |
| Application:         | Western Blotting (WB), Immunohistochemistry (IHC), Immunoprecipitation (IP),<br>Immunocytochemistry (ICC) |

## Product Details

|                   |  |
|-------------------|--|
| Purpose:          | Monoclonal Antibody to Retinol Binding Protein 2, Cellular (RBP2)  |
| Immunogen:        | Recombinant Retinol Binding Protein 2, Cellular (RBP2) corresponding to Met1-Lys134<br>(Accession # P50120)  |
| Clone:            | 8-1#   |
| Isotype:          | IgG2b kappa  |
| Specificity:      | The antibody is a mouse monoclonal antibody raised against RBP2. It has been selected for its<br>ability to recognize RBP2 in immunohistochemical staining and western blotting. |
| Cross-Reactivity: | Mouse, Pig, Rat  |
| Purification:     | Protein A + Protein G affinity chromatography  |

## Target Details

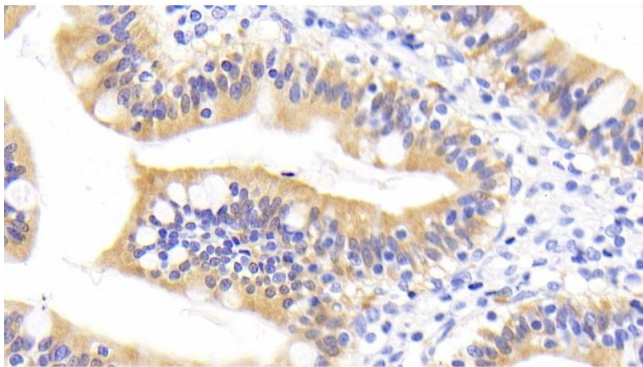
|                   |   |
|-------------------|---|
| Target:           | RBP2  |
| Alternative Name: | Retinol Binding Protein 2, Cellular ( <a href="#">RBP2 Products</a> )     |
| Background:       | RBP-2, CRABP-II, CRBP2, CRBP2, RBPC2, Cellular retinol-binding protein II |
| Pathways:         | <a href="#">Chromatin Binding</a>   |

## Application Details

|                    |   |
|--------------------|---|
| Application Notes: | Western blotting: 0.5-5 µg/mL Immunocytochemistry in formalin fixed cells: 5-30 µg/mL<br>Immunohistochemistry in formalin fixed frozen section: 5-30 µg/mL Immunohistochemistry in paraffin section: 5-30 µg/mL Optimal working dilutions must be determined by end user.   |
| Comment:           | The thermal stability is described by the loss rate. The loss rate was determined by accelerated thermal degradation test, that is, incubate the protein at 37°C for 48h, and no obvious degradation and precipitation were observed. The loss rate is less than 5% within the expiration date under appropriate storage condition. |
| Restrictions:      | For Research Use only   |

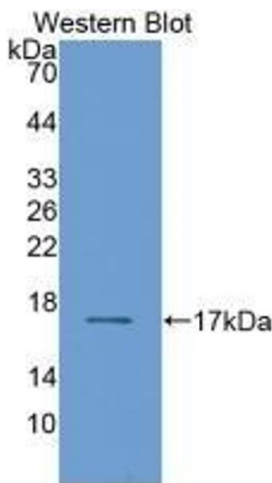
## Handling

|                    |   |
|--------------------|---|
| Format:            | Liquid  |
| Buffer:            | 0.01M PBS, pH 7.4, containing 0.05 % Proclin-300, 50 % glycerol.  |
| Preservative:      | ProClin   |
| Precaution of Use: | This product contains ProClin: a POISONOUS AND HAZARDOUS SUBSTANCE which should be handled by trained staff only.   |
| Storage:           | 4 °C, -20 °C  |
| Storage Comment:   | Store at 4°C for frequent use. Stored at -20°C in a manual defrost freezer for two year without detectable loss of activity. Avoid repeated freeze-thaw cycles. |
| Expiry Date:       | 24 months   |



### Immunohistochemistry

**Image 1.** Detection of RBP2 in Human Small intestine Tissue using Monoclonal Antibody to Retinol Binding Protein 2, Cellular (RBP2)



### Western Blotting

**Image 2.** Detection of Recombinant RBP2, Human using Monoclonal Antibody to Retinol Binding Protein 2, Cellular (RBP2)