

Datasheet for ABIN7427705

## anti-Clusterin antibody (AA 229-446)



[Go to Product page](#)

### 2 Images

#### Overview

Quantity:	100 µL
Target:	Clusterin (CLU)
Binding Specificity:	AA 229-446
Reactivity:	Pig
Host:	Mouse
Clonality:	Monoclonal
Conjugate:	This Clusterin antibody is un-conjugated
Application:	Western Blotting (WB), Immunohistochemistry (IHC)

#### Product Details

Purpose:	Monoclonal Antibody to Clusterin (CLU)
Immunogen:	Recombinant Clusterin (CLU) corresponding to Ile229~Glu446 (Accession # Q29549)
Clone:	D18
Isotype:	IgG1 kappa
Specificity:	The antibody is a mouse monoclonal antibody raised against CLU. It has been selected for its ability to recognize CLU in immunohistochemical staining and western blotting.
Purification:	Protein A + Protein G affinity chromatography

#### Target Details

Target:	Clusterin (CLU)
---------	-----------------

## Target Details

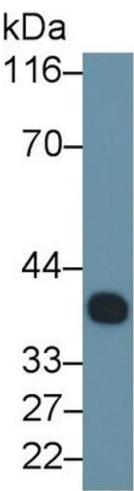
Alternative Name:	Clusterin ( <a href="#">CLU Products</a> )
Background:	CLU, TRPM2, KUB1, CLI, APOJ, SGP2, AAG4, APO-J, SP-40, Apolipoprotein J, Complement Lysis Inhibitor, 40,Sulfated Glycoprotein 2, Testosterone-Repressed Prostate Message 2
UniProt:	<a href="#">Q29549</a>
Pathways:	<a href="#">Apoptosis</a> , <a href="#">Negative Regulation of intrinsic apoptotic Signaling</a>

## Application Details

Application Notes:	Western blotting: 0.5-2 µg/mL,Immunohistochemistry: 5-20 µg/mL,Immunocytochemistry: 5-20 µg/mL,Optimal working dilutions must be determined by end user.
Comment:	The thermal stability is described by the loss rate. The loss rate was determined by accelerated thermal degradation test, that is, incubate the protein at 37°C for 48h, and no obvious degradation and precipitation were observed. The loss rate is less than 5% within the expiration date under appropriate storage condition.
Restrictions:	For Research Use only

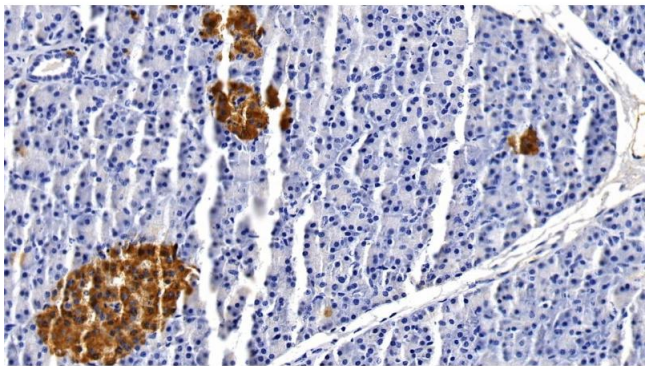
## Handling

Format:	Liquid
Concentration:	1 mg/mL
Buffer:	0.01M PBS, pH 7.4, containing 0.05 % Proclin-300, 50 % glycerol.
Preservative:	ProClin
Precaution of Use:	This product contains ProClin: a POISONOUS AND HAZARDOUS SUBSTANCE which should be handled by trained staff only.
Storage:	4 °C,-20 °C
Storage Comment:	Store at 4°C for frequent use. Stored at -20°C in a manual defrost freezer for two year without detectable loss of activity. Avoid repeated freeze-thaw cycles.
Expiry Date:	24 months



Western Blotting

**Image 1.** Detection of CLU in Porcine Serum using Monoclonal Antibody to Clusterin (CLU)



Immunohistochemistry

**Image 2.** Detection of CLU in Porcine Pancreas Tissue using Monoclonal Antibody to Clusterin (CLU)