

Datasheet for ABIN7427897  
**anti-IGF1 antibody (AA 49-118)**

## 6 Images

[Go to Product page](#)

## Overview

Quantity:	100 µL
Target:	IGF1
Binding Specificity:	AA 49-118
Reactivity:	Human
Host:	Mouse
Clonality:	Monoclonal
Conjugate:	This IGF1 antibody is un-conjugated
Application:	Western Blotting (WB), Immunohistochemistry (IHC), Immunoprecipitation (IP), Immunocytochemistry (ICC)

## Product Details

Purpose:	Monoclonal Antibody to Insulin Like Growth Factor 1 (IGF1)
Immunogen:	Recombinant Insulin Like Growth Factor 1 (IGF1) corresponding to Gly49~Ala118 with N-terminal His and GST Tag
Clone:	C1
Isotype:	IgG2b kappa
Specificity:	The antibody is a mouse monoclonal antibody raised against IGF1. It has been selected for its ability to recognize IGF1 in immunohistochemical staining and western blotting.
Cross-Reactivity:	Mouse, Pig, Rat
Purification:	Protein A + Protein G affinity chromatography

## Target Details

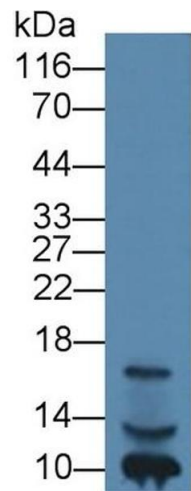
Target:	IGF1
Alternative Name:	Insulin Like Growth Factor 1 ( <a href="#">IGF1 Products</a> )
Background:	IGFI, IGF1A, IBP1, MGF, Somatomedin C, Mechano Growth Gactor
Pathways:	<a href="#">RTK Signaling</a> , <a href="#">Intracellular Steroid Hormone Receptor Signaling Pathway</a> , <a href="#">Peptide Hormone Metabolism</a> , <a href="#">Hormone Activity</a> , <a href="#">Regulation of Intracellular Steroid Hormone Receptor Signaling</a> , <a href="#">Regulation of Hormone Metabolic Process</a> , <a href="#">Regulation of Hormone Biosynthetic Process</a> , <a href="#">Stem Cell Maintenance</a> , <a href="#">Glycosaminoglycan Metabolic Process</a> , <a href="#">Regulation of Carbohydrate Metabolic Process</a> , <a href="#">Autophagy</a> , <a href="#">Smooth Muscle Cell Migration</a> , <a href="#">Activated T Cell Proliferation</a> , <a href="#">Positive Regulation of fat Cell Differentiation</a>

## Application Details

Application Notes:	Western blotting: 0.5-2 µg/mL Immunohistochemistry: 5-20 µg/mL Immunocytochemistry: 5-20 µg/mL Optimal working dilutions must be determined by end user.
Comment:	The thermal stability is described by the loss rate. The loss rate was determined by accelerated thermal degradation test, that is, incubate the protein at 37°C for 48h, and no obvious degradation and precipitation were observed. The loss rate is less than 5% within the expiration date under appropriate storage condition.
Restrictions:	For Research Use only

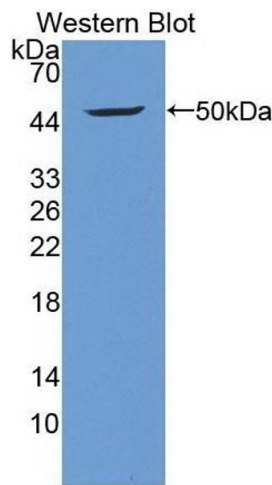
## Handling

Format:	Liquid
Buffer:	PBS, pH 7.4, containing 0.02 % Sodium azide, 50 % glycerol.
Preservative:	Sodium azide
Precaution of Use:	This product contains Sodium azide: a POISONOUS AND HAZARDOUS SUBSTANCE which should be handled by trained staff only.
Storage:	4 °C,-20 °C
Storage Comment:	Store at 4°C for frequent use. Stored at -20°C in a manual defrost freezer for two year without detectable loss of activity. Avoid repeated freeze-thaw cycles.
Expiry Date:	24 months



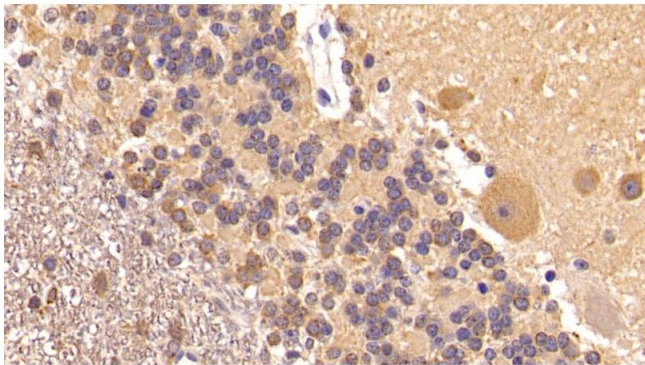
**Western Blotting**

**Image 1.** Detection of IGF1 in Human Lymphocyte lysate using Monoclonal Antibody to Insulin Like Growth Factor 1 (IGF1)



**Western Blotting**

**Image 2.** Detection of Recombinant IGF1, Human using Monoclonal Antibody to Insulin Like Growth Factor 1 (IGF1)



**Immunohistochemistry**

**Image 3.** Detection of IGF1 in Human Cerebellum Tissue using Monoclonal Antibody to Insulin Like Growth Factor 1 (IGF1)

Please check the [product details page](#) for more images. Overall 6 images are available for ABIN7427897.