



[Go to Product page](#)

Datasheet for ABIN7427900

## anti-CCL2 antibody (AA 24-96)

### 5 Images

#### Overview

Quantity:	100 µL
Target:	CCL2
Binding Specificity:	AA 24-96
Reactivity:	Mouse
Host:	Mouse
Clonality:	Monoclonal
Conjugate:	This CCL2 antibody is un-conjugated
Application:	Western Blotting (WB), Immunohistochemistry (IHC), Immunoprecipitation (IP), Immunocytochemistry (ICC)

#### Product Details

Purpose:	Monoclonal Antibody to Monocyte Chemotactic Protein 1 (MCP1)
Immunogen:	Recombinant Monocyte Chemotactic Protein 1 (MCP1) corresponding to Gln24~Arg96 with N-terminal His Tag
Clone:	C1
Isotype:	IgG2b kappa
Specificity:	The antibody is a mouse monoclonal antibody raised against MCP1. It has been selected for its ability to recognize MCP1 in immunohistochemical staining and western blotting.
Cross-Reactivity:	Human
Purification:	Protein A + Protein G affinity chromatography

## Target Details

---

Target:	CCL2
Alternative Name:	Monocyte Chemotactic Protein 1 ( <a href="#">CCL2 Products</a> )
Background:	CCL2, GDCF2, HC11, HSMCR30, MCAF, MCP1, SCYA2, SMC-CF, Chemokine C-C-Motif Ligand 2, Monocyte Chemotactic And Activating Factor, Monocyte Secretory Protein JE
Pathways:	<a href="#">Cellular Response to Molecule of Bacterial Origin</a> , <a href="#">Positive Regulation of Immune Effector Process</a> , <a href="#">ER-Nucleus Signaling</a> , <a href="#">Unfolded Protein Response</a> , <a href="#">The Global Phosphorylation Landscape of SARS-CoV-2 Infection</a>

## Application Details

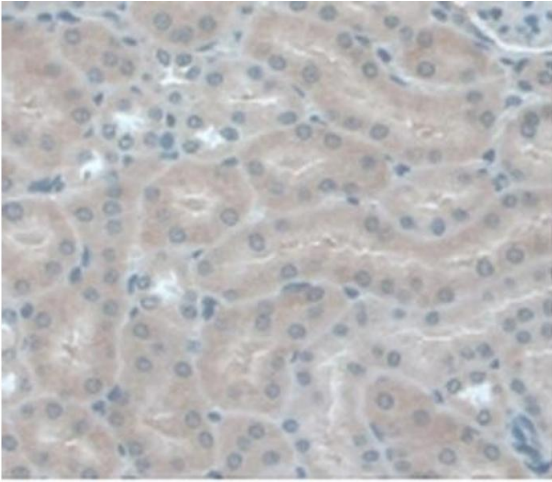
---

Application Notes:	Western blotting: 0.5-2 µg/mL Immunohistochemistry: 5-20 µg/mL Immunocytochemistry: 5-20 µg/mL Optimal working dilutions must be determined by end user.
Comment:	The thermal stability is described by the loss rate. The loss rate was determined by accelerated thermal degradation test, that is, incubate the protein at 37°C for 48h, and no obvious degradation and precipitation were observed. The loss rate is less than 5% within the expiration date under appropriate storage condition.
Restrictions:	For Research Use only

## Handling

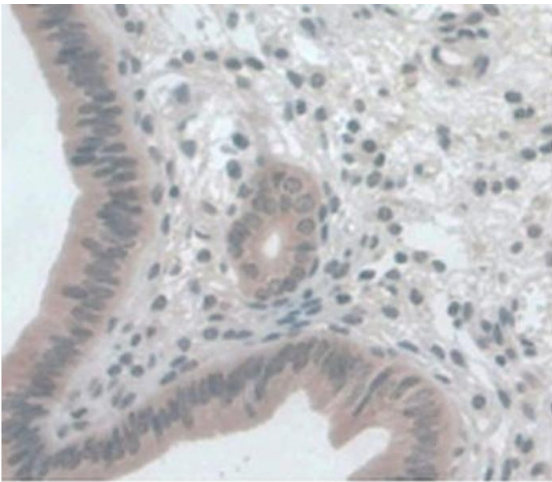
---

Format:	Liquid
Buffer:	0.01M PBS, pH 7.4, containing 0.05 % Proclin-300, 50 % glycerol.
Preservative:	ProClin
Precaution of Use:	This product contains ProClin: a POISONOUS AND HAZARDOUS SUBSTANCE which should be handled by trained staff only.
Storage:	4 °C,-20 °C
Storage Comment:	Store at 4°C for frequent use. Stored at -20°C in a manual defrost freezer for two year without detectable loss of activity. Avoid repeated freeze-thaw cycles.
Expiry Date:	24 months



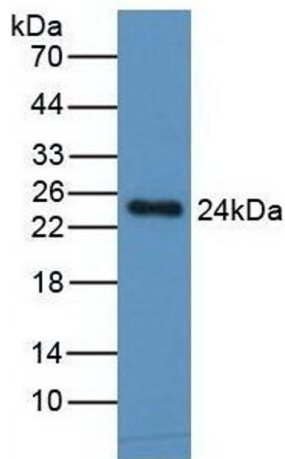
#### Immunohistochemistry

**Image 1.** Detection of MCP1 in Mouse Kidney Tissue using Monoclonal Antibody to Monocyte Chemotactic Protein 1 (MCP1)



#### Immunohistochemistry

**Image 2.** Detection of MCP1 in Mouse Uterus Tissue using Monoclonal Antibody to Monocyte Chemotactic Protein 1 (MCP1)



#### Western Blotting

**Image 3.** Detection of MCP1 in Human Spleen Tissue, using Monoclonal Antibody to Monocyte Chemotactic Protein 1 (MCP1)

Please check the [product details page](#) for more images. Overall 5 images are available for ABIN7427900.