



[Go to Product page](#)

Datasheet for ABIN7427918
anti-ENO2/NSE antibody (AA 2-285)

8 Images

Overview

Quantity:	100 µL
Target:	ENO2/NSE (ENO2)
Binding Specificity:	AA 2-285
Reactivity:	Human
Host:	Mouse
Clonality:	Monoclonal
Conjugate:	This ENO2/NSE antibody is un-conjugated
Application:	Western Blotting (WB), Immunohistochemistry (IHC), Immunoprecipitation (IP), Immunocytochemistry (ICC)

Product Details

Purpose:	Monoclonal Antibody to Enolase, Neuron Specific (NSE)
Immunogen:	Recombinant Enolase, Neuron Specific (NSE) corresponding to Ser2~Leu285+TILWSPLRTHLTRMIGLPGPSSQPCRDPCGVMT with N-terminal His Tag
Clone:	C3
Isotype:	IgG2b kappa
Specificity:	The antibody is a mouse monoclonal antibody raised against NSE. It has been selected for its ability to recognize NSE in immunohistochemical staining and western blotting.
Cross-Reactivity:	Mouse, Rat
Purification:	Protein A + Protein G affinity chromatography

Target Details

Target:	ENO2/NSE (ENO2)
Alternative Name:	Enolase, Neuron Specific (ENO2 Products)
Background:	ENO2, Enolase 2, Gamma Enolase, 2-phospho-D-glycerate hydro-lyase, Neural enolase

Application Details

Application Notes:	Western blotting: 0.5-2 µg/mL 1:500-2000 Immunohistochemistry: 5-20 µg/mL 1:50-200 Immunocytochemistry: 5-20 µg/mL 1:50-200 Optimal working dilutions must be determined by end user.
Comment:	The thermal stability is described by the loss rate. The loss rate was determined by accelerated thermal degradation test, that is, incubate the protein at 37°C for 48h, and no obvious degradation and precipitation were observed. The loss rate is less than 5% within the expiration date under appropriate storage condition.
Restrictions:	For Research Use only

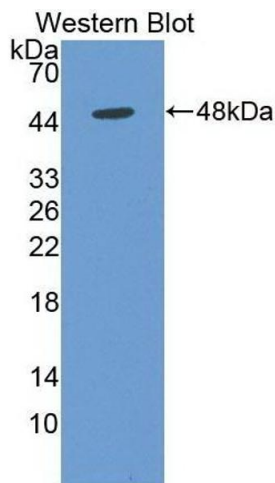
Handling

Format:	Liquid
Buffer:	PBS, pH 7.4, containing 0.02 % Sodium azide, 50 % glycerol.
Preservative:	Sodium azide
Precaution of Use:	This product contains Sodium azide: a POISONOUS AND HAZARDOUS SUBSTANCE which should be handled by trained staff only.
Storage:	4 °C,-20 °C
Storage Comment:	Store at 4°C for frequent use. Stored at -20°C in a manual defrost freezer for two year without detectable loss of activity. Avoid repeated freeze-thaw cycles.
Expiry Date:	24 months



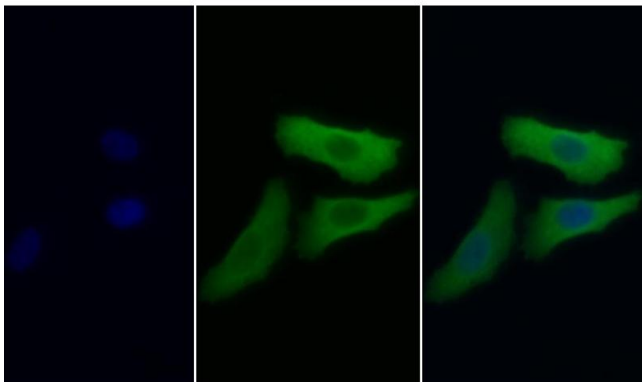
Western Blotting

Image 1. Detection of NSE in Mouse Cerebrum lysate using Monoclonal Antibody to Enolase, Neuron Specific (NSE)



Western Blotting

Image 2. Detection of Recombinant NSE, Human using Monoclonal Antibody to Enolase, Neuron Specific (NSE)



Immunofluorescence

Image 3. Detection of NSE in Human HepG2 cell using Monoclonal Antibody to Enolase, Neuron Specific (NSE)

Please check the [product details page](#) for more images. Overall 8 images are available for ABIN7427918.