

Datasheet for ABIN7427930
anti-SCGB1A1 antibody (AA 23-91)

3 Images

[Go to Product page](#)

Overview

Quantity:	100 µL
Target:	SCGB1A1
Binding Specificity:	AA 23-91
Reactivity:	Human
Host:	Mouse
Clonality:	Monoclonal
Conjugate:	This SCGB1A1 antibody is un-conjugated
Application:	Western Blotting (WB), Immunohistochemistry (IHC), Immunoprecipitation (IP), Immunocytochemistry (ICC)

Product Details

Purpose:	Monoclonal Antibody to Clara Cell Protein 16 (CC16)
Immunogen:	Recombinant Clara Cell Protein 16 (CC16) corresponding to Ile23~Asn91 with N-terminal His Tag
Clone:	C2
Isotype:	IgG2a kappa
Specificity:	The antibody is a mouse monoclonal antibody raised against CC16. It has been selected for its ability to recognize CC16 in immunohistochemical staining and western blotting.
Cross-Reactivity:	Pig, Rat
Purification:	Protein A + Protein G affinity chromatography

Target Details

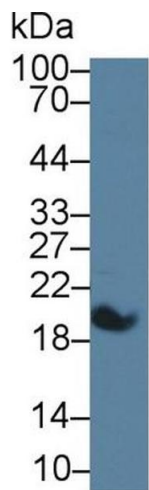
Target:	SCGB1A1
Alternative Name:	Clara Cell Protein 16 (SCGB1A1 Products)
Background:	SCGB1A1, CC10, CCSP, UGB, UG, Uteroglobin, Uteroglobin, Urinary Protein 1, Clara Cell Secretory Protein, Secretoglobin Family 1A Member 1, Clara-Cell Specific 10-kD Protein

Application Details

Application Notes:	Western blotting: 0.5-5 µg/mL Immunohistochemistry: 5-50 µg/mL Immunocytochemistry: 5-50 µg/mL Optimal working dilutions must be determined by end user.
Comment:	The thermal stability is described by the loss rate. The loss rate was determined by accelerated thermal degradation test, that is, incubate the protein at 37°C for 48h, and no obvious degradation and precipitation were observed. The loss rate is less than 5% within the expiration date under appropriate storage condition.
Restrictions:	For Research Use only

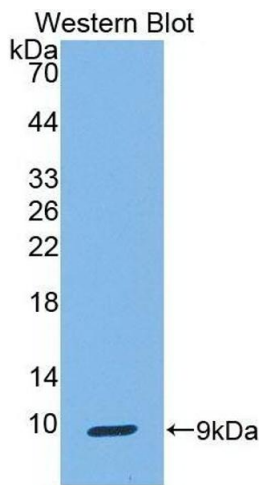
Handling

Format:	Liquid
Buffer:	PBS, pH 7.4, containing 0.02 % Sodium azide, 50 % glycerol.
Preservative:	Sodium azide
Precaution of Use:	This product contains Sodium azide: a POISONOUS AND HAZARDOUS SUBSTANCE which should be handled by trained staff only.
Storage:	4 °C, -20 °C
Storage Comment:	Store at 4°C for frequent use. Stored at -20°C in a manual defrost freezer for two year without detectable loss of activity. Avoid repeated freeze-thaw cycles.
Expiry Date:	24 months



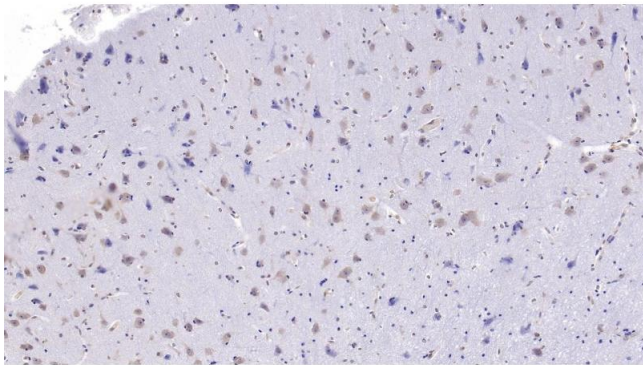
Western Blotting

Image 1. Detection of CC16 in Porcine Lung lysate using Monoclonal Antibody to Clara Cell Protein 16 (CC16)



Western Blotting

Image 2. Detection of Recombinant CC16, Human using Monoclonal Antibody to Clara Cell Protein 16 (CC16)



Immunohistochemistry

Image 3. Detection of CC16 in Human Cerebrum Tissue using Monoclonal Antibody to Clara Cell Protein 16 (CC16)