



[Go to Product page](#)

Datasheet for ABIN7427951  
**anti-Fibulin 1 antibody (AA 176-398)**

2 Images

### Overview

Quantity:	100 µL
Target:	Fibulin 1 (FBLN1)
Binding Specificity:	AA 176-398
Reactivity:	Human
Host:	Mouse
Clonality:	Monoclonal
Conjugate:	This Fibulin 1 antibody is un-conjugated
Application:	Western Blotting (WB), Immunohistochemistry (IHC), Immunoprecipitation (IP), Immunocytochemistry (ICC)

### Product Details

Purpose:	Monoclonal Antibody to Fibulin 1 (FBLN1)
Immunogen:	Recombinant Fibulin 1 (FBLN1) corresponding to Leu176~Val398 (Accession # P23142)
Clone:	D1
Isotype:	IgG2b kappa
Specificity:	The antibody is a mouse monoclonal antibody raised against FBLN1. It has been selected for its ability to recognize FBLN1 in immunohistochemical staining and western blotting.
Cross-Reactivity:	Rat
Purification:	Protein A + Protein G affinity chromatography

## Target Details

---

Target: Fibulin 1 (FBLN1)

---

Alternative Name: Fibulin 1 ([FBLN1 Products](#))

---

## Application Details

---

Application Notes: Western blotting: 0.5-2 µg/mL  
1:500-2000 Immunohistochemistry: 5-20 µg/mL  
1:50-200 Immunocytochemistry: 5-20 µg/mL  
1:50-200 Optimal working dilutions must be determined by end user.

---

Comment: The thermal stability is described by the loss rate. The loss rate was determined by accelerated thermal degradation test, that is, incubate the protein at 37°C for 48h, and no obvious degradation and precipitation were observed. The loss rate is less than 5% within the expiration date under appropriate storage condition.

---

Restrictions: For Research Use only

---

## Handling

---

Format: Liquid

---

Buffer: PBS, pH 7.4, containing 0.02 % Sodium azide, 50 % glycerol.

---

Preservative: Sodium azide

---

Precaution of Use: This product contains Sodium azide: a POISONOUS AND HAZARDOUS SUBSTANCE which should be handled by trained staff only.

---

Storage: 4 °C,-20 °C

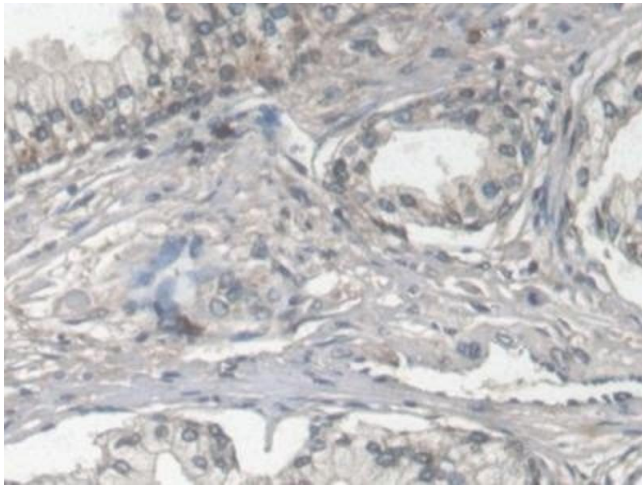
---

Storage Comment: Store at 4°C for frequent use. Stored at -20°C in a manual defrost freezer for two year without detectable loss of activity. Avoid repeated freeze-thaw cycles.

---

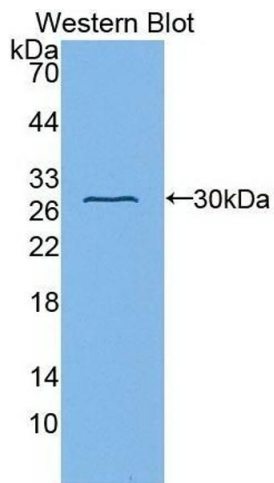
Expiry Date: 24 months

---



### Immunohistochemistry

**Image 1.** Detection of FBLN1 in Human Prostate Tissue using Monoclonal Antibody to Fibulin 1 (FBLN1)



### Western Blotting

**Image 2.** Detection of Recombinant FBLN1, Human using Monoclonal Antibody to Fibulin 1 (FBLN1)