

Datasheet for ABIN7427978  
**anti-Cytokeratin 19 antibody (AA 245-391)**

## 8 Images

[Go to Product page](#)

## Overview

|                      |  |
|----------------------|--|
| Quantity:            | 100 µL   |
| Target:              | Cytokeratin 19 (KRT19)   |
| Binding Specificity: | AA 245-391   |
| Reactivity:          | Human  |
| Host:                | Mouse  |
| Clonality:           | Monoclonal   |
| Conjugate:           | This Cytokeratin 19 antibody is un-conjugated  |
| Application:         | Western Blotting (WB), Immunohistochemistry (IHC), Immunocytochemistry (ICC), Immunoprecipitation (IP) |

## Product Details

|               |   |
|---------------|---|
| Purpose:      | Monoclonal Antibody to Cytokeratin 19 (CK19)  |
| Immunogen:    | Recombinant Cytokeratin 19 (CK19) corresponding to Leu245~Tyr391 with N-terminal His Tag  |
| Clone:        | 1#  |
| Isotype:      | IgG1 kappa  |
| Specificity:  | The antibody is a mouse monoclonal antibody raised against CK19. It has been selected for its ability to recognize CK19 in immunohistochemical staining and western blotting. |
| Purification: | Protein A + Protein G affinity chromatography   |

## Target Details

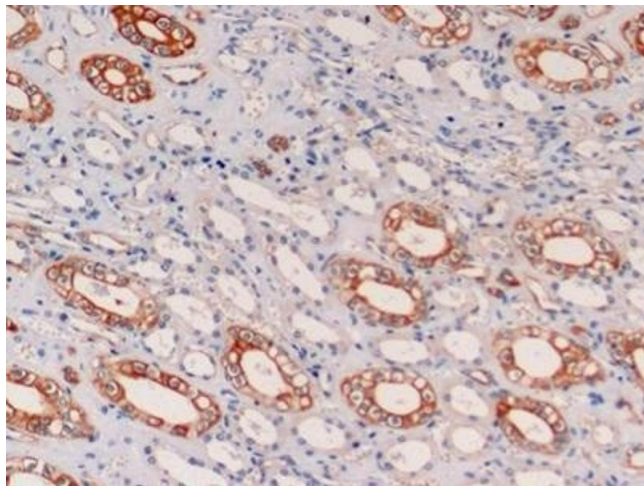
|                   |  |
|-------------------|--|
| Target:           | Cytokeratin 19 (KRT19)   |
| Alternative Name: | Cytokeratin 19 ( <a href="#">KRT19 Products</a> )  |
| Background:       | K19, KRT19, K1CS, Keratin 19, 40- kDa Keratin Intermediate Filament, Keratin, type I cytoskeletal 19 |

## Application Details

|                    |   |
|--------------------|---|
| Application Notes: | Western blotting: 0.5-5 µg/mL Immunocytochemistry in formalin fixed cells: 5-30 µg/mL Immunohistochemistry in formalin fixed frozen section: 5-30 µg/mL Immunohistochemistry in paraffin section: 5-30 µg/mL Enzyme-linked Immunosorbent Assay: 0.05-2 µg/mL Optimal working dilutions must be determined by end user.              |
| Comment:           | The thermal stability is described by the loss rate. The loss rate was determined by accelerated thermal degradation test, that is, incubate the protein at 37°C for 48h, and no obvious degradation and precipitation were observed. The loss rate is less than 5% within the expiration date under appropriate storage condition. |
| Restrictions:      | For Research Use only   |

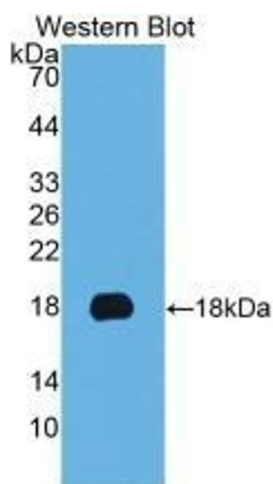
## Handling

|                    |   |
|--------------------|---|
| Format:            | Liquid  |
| Buffer:            | PBS, pH 7.4, containing 0.02 % Sodium azide, 50 % glycerol.   |
| Preservative:      | Sodium azide  |
| Precaution of Use: | This product contains Sodium azide: a POISONOUS AND HAZARDOUS SUBSTANCE which should be handled by trained staff only.  |
| Storage:           | 4 °C, -20 °C  |
| Storage Comment:   | Store at 4°C for frequent use. Stored at -20°C in a manual defrost freezer for two year without detectable loss of activity. Avoid repeated freeze-thaw cycles. |
| Expiry Date:       | 24 months   |



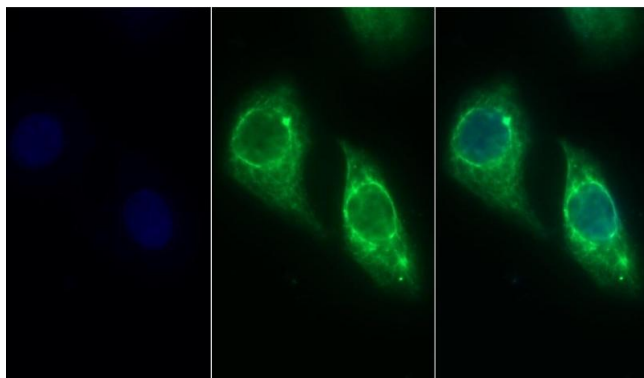
#### Immunohistochemistry

**Image 1.** Detection of CK19 in Human Kidney Tissue using Monoclonal Antibody to Cytokeratin 19 (CK19)



#### Western Blotting

**Image 2.** Detection of Recombinant KRT19, Human using Monoclonal Antibody to Cytokeratin 19 (CK19)



#### Immunofluorescence

**Image 3.** Detection of CK19 in Human Hela cell using Monoclonal Antibody to Cytokeratin 19 (CK19)

Please check the [product details page](#) for more images. Overall 8 images are available for ABIN7427978.