

Datasheet for ABIN7428056
anti-IL28A antibody (AA 26-200)

3 Images

[Go to Product page](#)

Overview

Quantity:	100 µL
Target:	IL28A
Binding Specificity:	AA 26-200
Reactivity:	Human
Host:	Mouse
Clonality:	Monoclonal
Conjugate:	This IL28A antibody is un-conjugated
Application:	Western Blotting (WB), Immunohistochemistry (IHC), Immunoprecipitation (IP), Immunocytochemistry (ICC)

Product Details

Purpose:	Monoclonal Antibody to Interleukin 28A (IL28A)
Immunogen:	Recombinant Interleukin 28A (IL28A) corresponding to Val26~Val200 (Accession # Q8IZJ0) with N-terminal His and GST Tag
Clone:	C11
Isotype:	IgG2b kappa
Specificity:	The antibody is a mouse monoclonal antibody raised against IL28A. It has been selected for its ability to recognize IL28A in immunohistochemical staining and western blotting.
Purification:	Protein A + Protein G affinity chromatography

Target Details

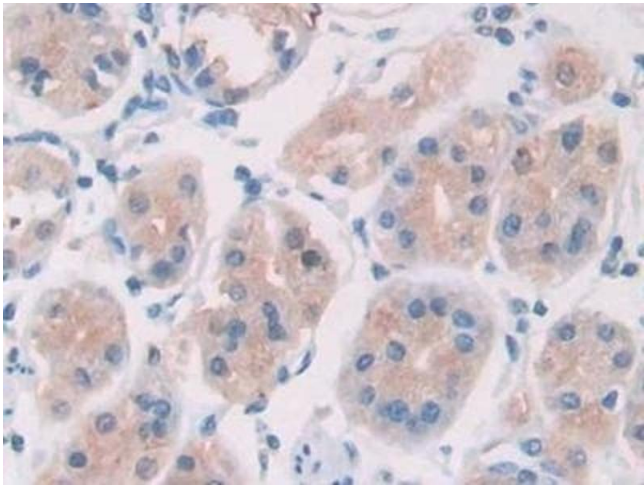
Target:	IL28A
Alternative Name:	Interleukin 28A (IL28A Products)
Background:	IFNL2, Interferon,Lambda 2, Cytokine Zcyto20

Application Details

Application Notes:	Western blotting: 0.5-2 µg/mL Immunohistochemistry: 5-20 µg/mL Immunocytochemistry: 5-20 µg/mL Optimal working dilutions must be determined by end user.
Comment:	The thermal stability is described by the loss rate. The loss rate was determined by accelerated thermal degradation test, that is, incubate the protein at 37°C for 48h, and no obvious degradation and precipitation were observed. The loss rate is less than 5% within the expiration date under appropriate storage condition.
Restrictions:	For Research Use only

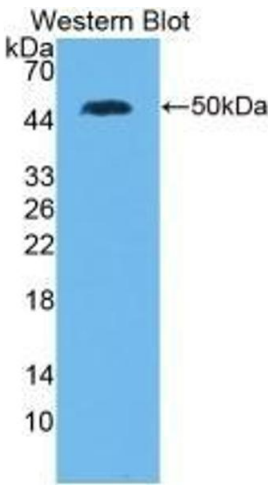
Handling

Format:	Liquid
Buffer:	PBS, pH 7.4, containing 0.02 % Sodium azide, 50 % glycerol.
Preservative:	Sodium azide
Precaution of Use:	This product contains Sodium azide: a POISONOUS AND HAZARDOUS SUBSTANCE which should be handled by trained staff only.
Storage:	4 °C,-20 °C
Storage Comment:	Store at 4°C for frequent use. Stored at -20°C in a manual defrost freezer for two year without detectable loss of activity. Avoid repeated freeze-thaw cycles.
Expiry Date:	24 months



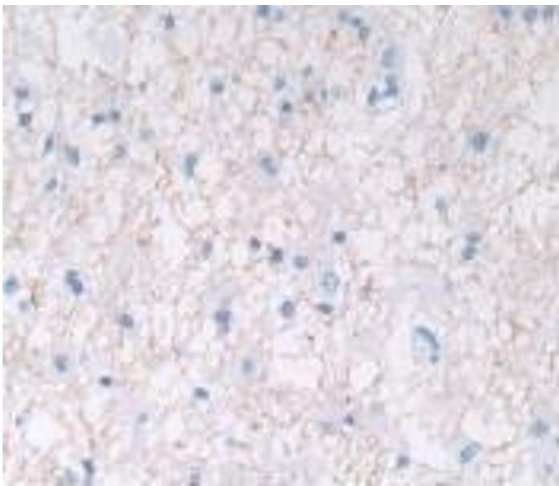
Immunohistochemistry

Image 1. Detection of IL28A in Human Stomach Tissue using Monoclonal Antibody to Interleukin 28A (IL28A)



Western Blotting

Image 2. Detection of Recombinant IL28A, Human using Monoclonal Antibody to Interleukin 28A (IL28A)



Immunohistochemistry

Image 3. Detection of IL28A in Human Glioma Tissue using Monoclonal Antibody to Interleukin 28A (IL28A)