

Datasheet for ABIN7428377
anti-LRG1 antibody (AA 37-340)[Go to Product page](#)

4 Images

Overview

Quantity:	100 µL
Target:	LRG1
Binding Specificity:	AA 37-340
Reactivity:	Human
Host:	Mouse
Clonality:	Monoclonal
Conjugate:	This LRG1 antibody is un-conjugated
Application:	Western Blotting (WB), Immunohistochemistry (IHC), Immunoprecipitation (IP), Immunocytochemistry (ICC)

Product Details

Purpose:	Monoclonal Antibody to Leucine Rich Alpha-2-Glycoprotein 1 (LRG1)
Immunogen:	Recombinant Leucine Rich Alpha-2-Glycoprotein 1 (LRG1) corresponding to Thr37~Leu340 with N-terminal His Tag
Clone:	D2
Isotype:	IgG2a kappa
Specificity:	The antibody is a mouse monoclonal antibody raised against LRG1. It has been selected for its ability to recognize LRG1 in immunohistochemical staining and western blotting.
Cross-Reactivity:	Pig
Purification:	Protein A + Protein G affinity chromatography

Target Details

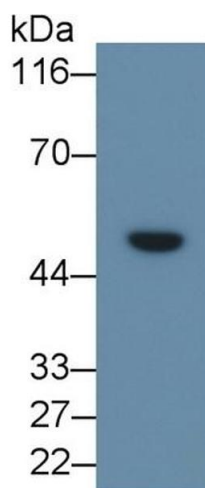
Target:	LRG1
Alternative Name:	Leucine Rich Alpha-2-Glycoprotein 1 (LRG1 Products)
Pathways:	Brown Fat Cell Differentiation

Application Details

Application Notes:	Western blotting: 0.5-2 µg/mL Immunohistochemistry: 5-20 µg/mL Immunocytochemistry: 5-20 µg/mL Optimal working dilutions must be determined by end user.
Comment:	The thermal stability is described by the loss rate. The loss rate was determined by accelerated thermal degradation test, that is, incubate the protein at 37°C for 48h, and no obvious degradation and precipitation were observed. The loss rate is less than 5% within the expiration date under appropriate storage condition.
Restrictions:	For Research Use only

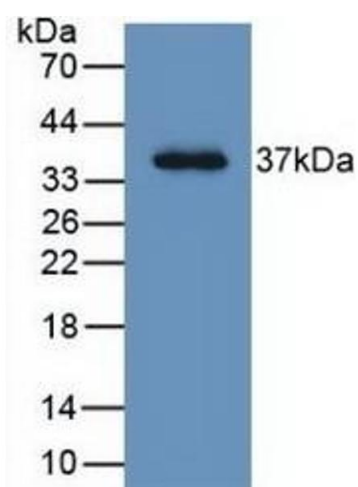
Handling

Format:	Liquid
Buffer:	0.01M PBS, pH 7.4, containing 0.05 % Proclin-300, 50 % glycerol.
Preservative:	ProClin
Precaution of Use:	This product contains ProClin: a POISONOUS AND HAZARDOUS SUBSTANCE which should be handled by trained staff only.
Storage:	4 °C,-20 °C
Storage Comment:	Store at 4°C for frequent use. Stored at -20°C in a manual defrost freezer for two year without detectable loss of activity. Avoid repeated freeze-thaw cycles.
Expiry Date:	24 months



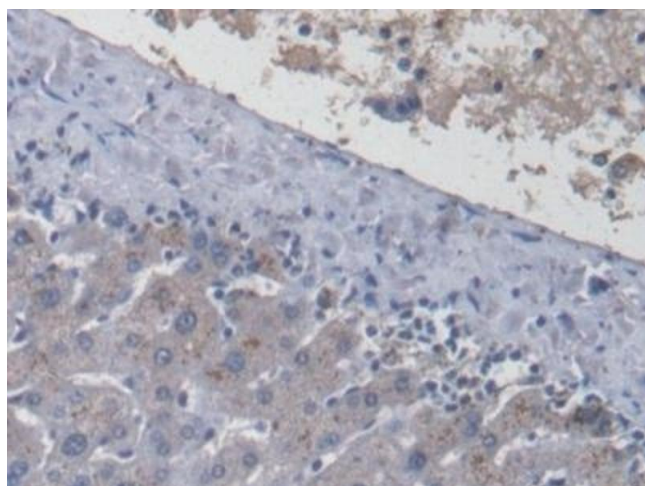
Western Blotting

Image 1. Detection of LRG1 in Human Serum using Monoclonal Antibody to Leucine Rich Alpha-2-Glycoprotein 1 (LRG1)



Western Blotting

Image 2. Detection of Recombinant LRG1, Human using Monoclonal Antibody to Leucine Rich Alpha-2-Glycoprotein 1 (LRG1)



Immunohistochemistry

Image 3. Detection of LRG1 in Human Liver Tissue using Monoclonal Antibody to Leucine Rich Alpha-2-Glycoprotein 1 (LRG1)

Please check the [product details page](#) for more images. Overall 4 images are available for ABIN7428377.