

Datasheet for ABIN7428413  
**anti-IL-6 antibody (AA 25-211)**[Go to Product page](#)

## 3 Images

## Overview

Quantity:	100 µL
Target:	IL-6 (IL6)
Binding Specificity:	AA 25-211
Reactivity:	Rat
Host:	Mouse
Clonality:	Monoclonal
Conjugate:	This IL-6 antibody is un-conjugated
Application:	Western Blotting (WB), Immunohistochemistry (IHC), Immunoprecipitation (IP), Immunocytochemistry (ICC)

## Product Details

Purpose:	Monoclonal Antibody to Interleukin 6 (IL6)
Immunogen:	Eukaryotic Interleukin 6 (IL6) corresponding to Phe25~Thr211 with N-terminal His Tag
Clone:	C2
Isotype:	IgG2b kappa
Specificity:	The antibody is a mouse monoclonal antibody raised against IL6. It has been selected for its ability to recognize IL6 in immunohistochemical staining and western blotting.
Purification:	Protein A + Protein G affinity chromatography

## Target Details

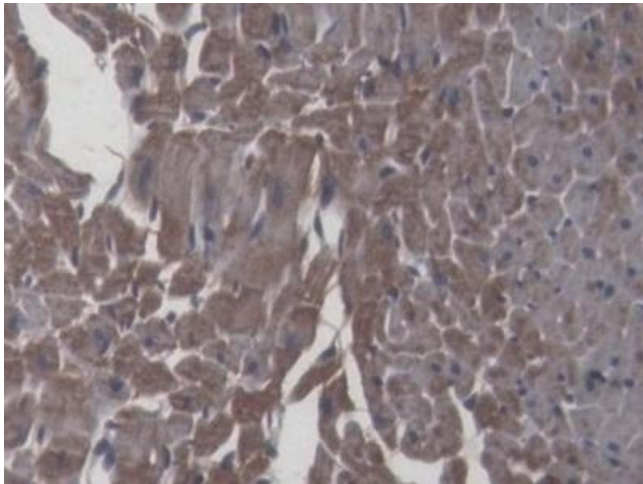
Target:	IL-6 (IL6)
Alternative Name:	Interleukin 6 ( <a href="#">IL6 Products</a> )
Background:	MG12-A, MG12A, HGF, BSF2, HSF, IFNB2, B-Cell Stimulatory Factor-2, Hybridoma/Plasmacytoma Growth Factor, Hepatocyte Stimulating Factor, Cytotoxic T-Cell Differentiation Factor
Pathways:	<a href="#">TLR Signaling</a> , <a href="#">Hormone Transport</a> , <a href="#">Negative Regulation of Hormone Secretion</a> , <a href="#">Myometrial Relaxation and Contraction</a> , <a href="#">Positive Regulation of Immune Effector Process</a> , <a href="#">Production of Molecular Mediator of Immune Response</a> , <a href="#">Regulation of Carbohydrate Metabolic Process</a> , <a href="#">Autophagy</a> , <a href="#">Cell RedoxHomeostasis</a> , <a href="#">Cancer Immune Checkpoints</a> , <a href="#">Inflammasome</a>

## Application Details

Application Notes:	Western blotting: 0.5-2 µg/mL 1:500-2000 Immunohistochemistry: 5-20 µg/mL 1:50-200 Immunocytochemistry: 5-20 µg/mL 1:50-200 Optimal working dilutions must be determined by end user.
Comment:	The thermal stability is described by the loss rate. The loss rate was determined by accelerated thermal degradation test, that is, incubate the protein at 37°C for 48h, and no obvious degradation and precipitation were observed. The loss rate is less than 5% within the expiration date under appropriate storage condition.
Restrictions:	For Research Use only

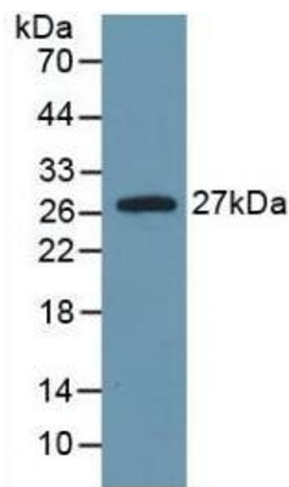
## Handling

Format:	Liquid
Buffer:	0.01M PBS, pH 7.4, containing 0.05 % Proclin-300, 50 % glycerol.
Preservative:	ProClin
Precaution of Use:	This product contains ProClin: a POISONOUS AND HAZARDOUS SUBSTANCE which should be handled by trained staff only.
Storage:	4 °C, -20 °C
Storage Comment:	Store at 4°C for frequent use. Stored at -20°C in a manual defrost freezer for two year without detectable loss of activity. Avoid repeated freeze-thaw cycles.
Expiry Date:	24 months



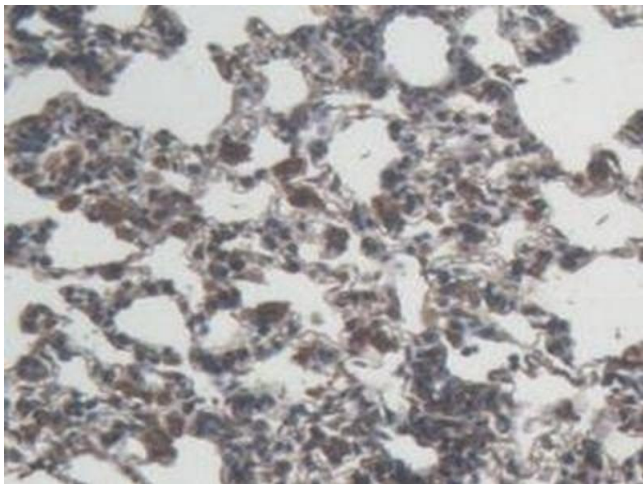
Immunohistochemistry

**Image 1.** Detection of IL6 in Rat Cardiac Muscle Tissue using Monoclonal Antibody to Interleukin 6 (IL6)



Western Blotting

**Image 2.** Detection of Recombinant IL6, Rat using Monoclonal Antibody to Interleukin 6 (IL6)



Immunohistochemistry

**Image 3.** Detection of IL6 in Rat Lung Tissue using Monoclonal Antibody to Interleukin 6 (IL6)