



[Go to Product page](#)

Datasheet for ABIN7428452
anti-Estradiol antibody

1 Image

Overview

Quantity:	100 µL
Target:	Estradiol
Reactivity:	Various Species
Host:	Mouse
Clonality:	Monoclonal
Conjugate:	This Estradiol antibody is un-conjugated
Application:	Immunohistochemistry (IHC), Immunoprecipitation (IP), Immunocytochemistry (ICC)

Product Details

Purpose:	Monoclonal Antibody to Estradiol (E2)
Immunogen:	OVA Conjugated Estradiol (E2)
Clone:	C5
Isotype:	IgG1 kappa
Specificity:	The antibody is a mouse monoclonal antibody raised against E2. It has been selected for its ability to recognize E2 in immunohistochemical staining and western blotting.
Cross-Reactivity:	Human
Purification:	Protein A + Protein G affinity chromatography

Target Details

Target:	Estradiol
---------	-----------

Target Details

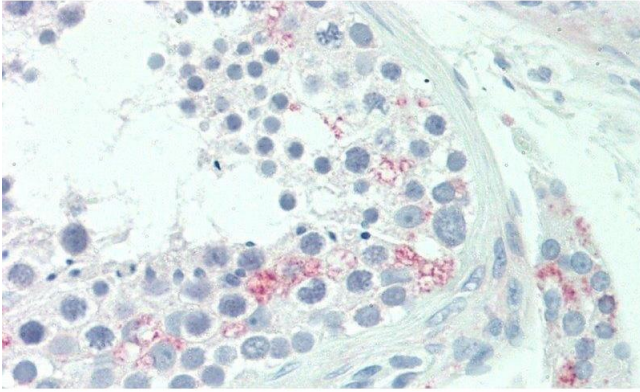
Abstract:	Estradiol Products
Target Type:	Hormone
Background:	17B-Estradiol, Oestradiol, Beta-Estradiol

Application Details

Application Notes:	Immunohistochemistry: 5-20 µg/mL Immunocytochemistry: 5-20 µg/mL Optimal working dilutions must be determined by end user.
Comment:	The thermal stability is described by the loss rate. The loss rate was determined by accelerated thermal degradation test, that is, incubate the protein at 37°C for 48h, and no obvious degradation and precipitation were observed. The loss rate is less than 5% within the expiration date under appropriate storage condition.
Restrictions:	For Research Use only

Handling

Format:	Liquid
Buffer:	0.01M PBS, pH 7.4, containing 0.05 % Proclin-300, 50 % glycerol.
Preservative:	ProClin
Precaution of Use:	This product contains ProClin: a POISONOUS AND HAZARDOUS SUBSTANCE which should be handled by trained staff only.
Storage:	4 °C,-20 °C
Storage Comment:	Store at 4°C for frequent use. Stored at -20°C in a manual defrost freezer for two year without detectable loss of activity. Avoid repeated freeze-thaw cycles.
Expiry Date:	24 months



Immunohistochemistry

Image 1. Detection of E2 in Human Testis Tissue using Monoclonal Antibody to Estradiol (E2)