

Datasheet for ABIN7428500
anti-EGF antibody (AA 609-751)[Go to Product page](#)

2 Images

Overview

| | |
|----------------------|--|
| Quantity: | 100 µL |
| Target: | EGF |
| Binding Specificity: | AA 609-751 |
| Reactivity: | Human |
| Host: | Mouse |
| Clonality: | Monoclonal |
| Conjugate: | This EGF antibody is un-conjugated |
| Application: | Western Blotting (WB), Immunohistochemistry (IHC), Immunoprecipitation (IP), Immunocytochemistry (ICC) |

Product Details

| | |
|-------------------|---|
| Purpose: | Monoclonal Antibody to Epidermal Growth Factor (EGF) |
| Immunogen: | Recombinant Epidermal Growth Factor (EGF) corresponding to Ala609~Gly751 with N-terminal His Tag |
| Clone: | 2# |
| Isotype: | IgG2b kappa |
| Specificity: | The antibody is a mouse monoclonal antibody raised against EGF. It has been selected for its ability to recognize EGF in immunohistochemical staining and western blotting. |
| Cross-Reactivity: | Pig |
| Purification: | Protein A + Protein G affinity chromatography |

Target Details

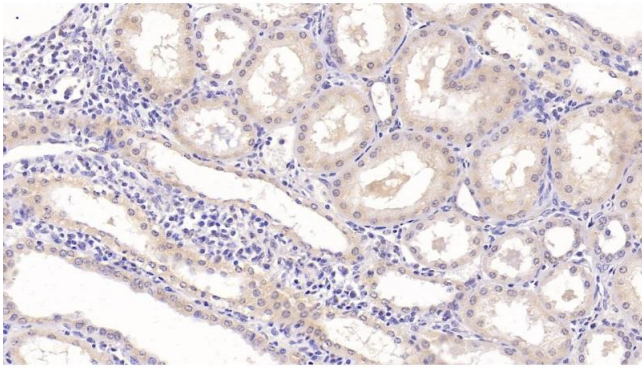
| | |
|-------------------|--|
| Target: | EGF |
| Alternative Name: | Epidermal Growth Factor (EGF Products) |
| Background: | URG, Beta-Urogastrone, Pro-epidermal growth factor |
| Pathways: | NF-kappaB Signaling , RTK Signaling , Fc-epsilon Receptor Signaling Pathway , EGFR Signaling Pathway , Neurotrophin Signaling Pathway , Regulation of Carbohydrate Metabolic Process , Hepatitis C , Protein targeting to Nucleus , Interaction of EGFR with phospholipase C-gamma , Thromboxane A2 Receptor Signaling , EGFR Downregulation |

Application Details

| | |
|--------------------|---|
| Application Notes: | Western blotting: 0.5-5 µg/mL Immunohistochemistry: 5-30 µg/mL Immunocytochemistry: 5-30 µg/mL Optimal working dilutions must be determined by end user. |
| Comment: | The thermal stability is described by the loss rate. The loss rate was determined by accelerated thermal degradation test, that is, incubate the protein at 37°C for 48h, and no obvious degradation and precipitation were observed. The loss rate is less than 5% within the expiration date under appropriate storage condition. |
| Restrictions: | For Research Use only |

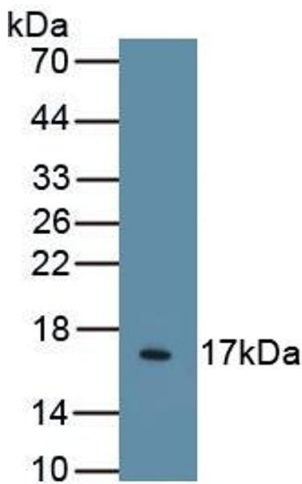
Handling

| | |
|--------------------|---|
| Format: | Liquid |
| Buffer: | 0.01M PBS, pH 7.4, containing 0.05 % Proclin-300, 50 % glycerol. |
| Preservative: | ProClin |
| Precaution of Use: | This product contains ProClin: a POISONOUS AND HAZARDOUS SUBSTANCE which should be handled by trained staff only. |
| Storage: | 4 °C,-20 °C |
| Storage Comment: | Store at 4°C for frequent use. Stored at -20°C in a manual defrost freezer for two year without detectable loss of activity. Avoid repeated freeze-thaw cycles. |
| Expiry Date: | 24 months |



Immunohistochemistry

Image 1. Detection of EGF in Human Kidney Tissue using Monoclonal Antibody to Epidermal Growth Factor (EGF)



Western Blotting

Image 2. Detection of Recombinant EGF, Human using Monoclonal Antibody to Epidermal Growth Factor (EGF)