



[Go to Product page](#)

Datasheet for ABIN7428530  
**anti-CRYL1 antibody (AA 1-319)**

2 Images

Overview

Quantity:	100 µL
Target:	CRYL1
Binding Specificity:	AA 1-319
Reactivity:	Human
Host:	Mouse
Clonality:	Monoclonal
Conjugate:	This CRYL1 antibody is un-conjugated
Application:	Western Blotting (WB), Immunohistochemistry (IHC), Immunoprecipitation (IP), Immunocytochemistry (ICC)

Product Details

Purpose:	Monoclonal Antibody to Crystallin Lambda 1 (CRY11)
Immunogen:	Recombinant Crystallin Lambda 1 (CRY11) corresponding to Met1~Gln319 (Accession # Q9Y2S2)
Clone:	C4
Isotype:	IgG1 kappa
Specificity:	The antibody is a mouse monoclonal antibody raised against CRY11. It has been selected for its ability to recognize CRY11 in immunohistochemical staining and western blotting.
Cross-Reactivity:	Pig
Purification:	Protein A + Protein G affinity chromatography

## Target Details

---

Target:	CRYL1
Alternative Name:	Crystallin Lambda 1 ( <a href="#">CRYL1 Products</a> )
Background:	GDH, Lambda-CRY, Gul3DH, L-Gulonate 3-Dehydrogenase, Lambda-Crystallin Homolog

## Application Details

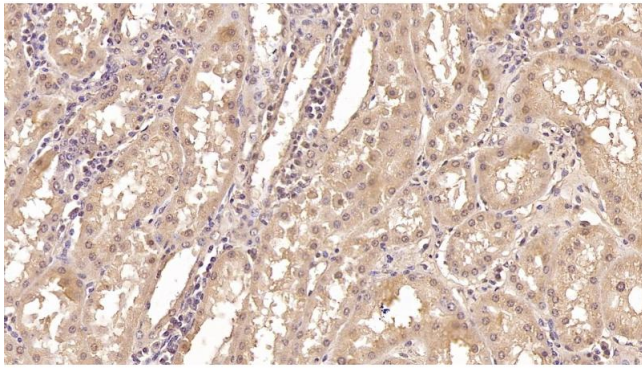
---

Application Notes:	Western blotting: 0.5-5 µg/mL Immunohistochemistry: 5-30 µg/mL Immunocytochemistry: 5-30 µg/mL Optimal working dilutions must be determined by end user.
Comment:	The thermal stability is described by the loss rate. The loss rate was determined by accelerated thermal degradation test, that is, incubate the protein at 37°C for 48h, and no obvious degradation and precipitation were observed. The loss rate is less than 5% within the expiration date under appropriate storage condition.
Restrictions:	For Research Use only

## Handling

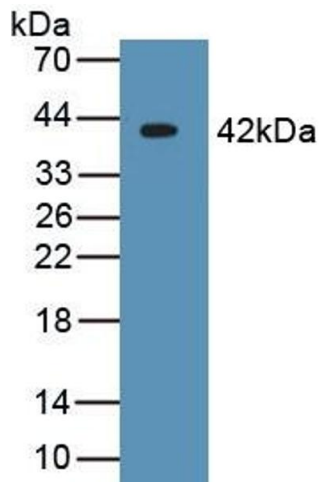
---

Format:	Liquid
Buffer:	PBS, pH 7.4, containing 0.02 % Sodium azide, 50 % glycerol.
Preservative:	Sodium azide
Precaution of Use:	This product contains Sodium azide: a POISONOUS AND HAZARDOUS SUBSTANCE which should be handled by trained staff only.
Storage:	4 °C,-20 °C
Storage Comment:	Store at 4°C for frequent use. Stored at -20°C in a manual defrost freezer for two year without detectable loss of activity. Avoid repeated freeze-thaw cycles.
Expiry Date:	24 months



### Immunohistochemistry

**Image 1.** Detection of CRY11 in Human Kidney Tissue using Monoclonal Antibody to Crystallin Lambda 1 (CRY11)



### Western Blotting

**Image 2.** Detection of Recombinant CRY11, Human using Monoclonal Antibody to Crystallin Lambda 1 (CRY11)