



[Go to Product page](#)

Datasheet for ABIN7428584  
**anti-C-Peptide antibody**

1 Image

### Overview

|              |   |
|--------------|---|
| Quantity:    | 100 µL  |
| Target:      | C-Peptide   |
| Reactivity:  | Rat   |
| Host:        | Mouse   |
| Clonality:   | Monoclonal  |
| Conjugate:   | This C-Peptide antibody is un-conjugated  |
| Application: | Western Blotting (WB), Immunohistochemistry (IHC), Immunoprecipitation (IP),<br>Immunocytochemistry (ICC) |

### Product Details

|               |   |
|---------------|---|
| Purpose:      | Monoclonal Antibody to C-Peptide (CP)   |
| Immunogen:    | KLH Conjugated C-Peptide (CP)   |
| Clone:        | C5  |
| Isotype:      | IgG2a kappa   |
| Specificity:  | The antibody is a mouse monoclonal antibody raised against CP. It has been selected for its ability to recognize CP in immunohistochemical staining and western blotting. |
| Purification: | Antigen-specific affinity chromatography followed by Protein A affinity chromatography  |

### Target Details

|         |           |
|---------|-----------|
| Target: | C-Peptide |
|---------|-----------|

## Target Details

---

Abstract: [C-Peptide Products](#)

## Application Details

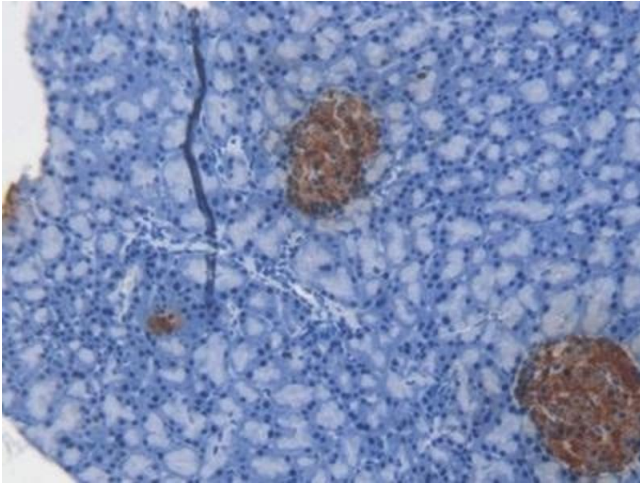
---

|                    |   |
|--------------------|---|
| Application Notes: | Western blotting: 0.5-2 µg/mL<br>Immunohistochemistry: 5-20 µg/mL<br>Immunocytochemistry: 5-20 µg/mL<br>Optimal working dilutions must be determined by end user.   |
| Comment:           | The thermal stability is described by the loss rate. The loss rate was determined by accelerated thermal degradation test, that is, incubate the protein at 37°C for 48h, and no obvious degradation and precipitation were observed. The loss rate is less than 5% within the expiration date under appropriate storage condition. |
| Restrictions:      | For Research Use only   |

## Handling

---

|                    |   |
|--------------------|---|
| Format:            | Liquid  |
| Buffer:            | PBS, pH 7.4, containing 0.02 % Sodium azide, 50 % glycerol.   |
| Preservative:      | Sodium azide  |
| Precaution of Use: | This product contains Sodium azide: a POISONOUS AND HAZARDOUS SUBSTANCE which should be handled by trained staff only.  |
| Storage:           | 4 °C, -20 °C  |
| Storage Comment:   | Store at 4°C for frequent use. Stored at -20°C in a manual defrost freezer for two year without detectable loss of activity. Avoid repeated freeze-thaw cycles. |
| Expiry Date:       | 24 months   |



### Immunohistochemistry

**Image 1.** Detection of CP in Rat Pancreas Tissue using Monoclonal Antibody to C-Peptide (CP)