

Datasheet for ABIN7428665

anti-Complement C3 Convertase antibody**3** Images[Go to Product page](#)

Overview

Quantity:	100 µL
Target:	Complement C3 Convertase
Reactivity:	Human
Host:	Mouse
Clonality:	Monoclonal
Conjugate:	This Complement C3 Convertase antibody is un-conjugated
Application:	Immunohistochemistry (IHC), Western Blotting (WB), Immunocytochemistry (ICC), Immunoprecipitation (IP)

Product Details

Purpose:	Monoclonal Antibody to Complement C3 Convertase (C3 Convertase)
Immunogen:	Recombinant Complement C3 Convertase (C3 Convertase) corresponding to N-terminal His Tag
Clone:	1-2#
Isotype:	IgG
Specificity:	The antibody is a mouse monoclonal antibody raised against C3 Convertase. It has been selected for its ability to recognize C3 Convertase in immunohistochemical staining and western blotting.
Purification:	Protein A + Protein G affinity chromatography

Target Details

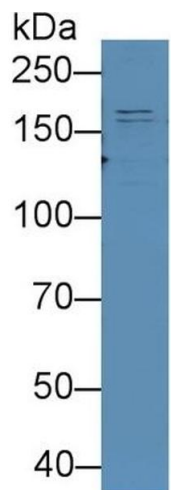
Target:	Complement C3 Convertase
Abstract:	Complement C3 Convertase Products
Background:	C3c, C4b2a, C3bBb, complement C.hivin.4.hivin2

Application Details

Application Notes:	Western blotting: 0.5-2 µg/mL Immunohistochemistry: 5-20 µg/mL Immunocytochemistry: 5-20 µg/mL Optimal working dilutions must be determined by end user.
Comment:	The thermal stability is described by the loss rate. The loss rate was determined by accelerated thermal degradation test, that is, incubate the protein at 37°C for 48h, and no obvious degradation and precipitation were observed. The loss rate is less than 5% within the expiration date under appropriate storage condition.
Restrictions:	For Research Use only

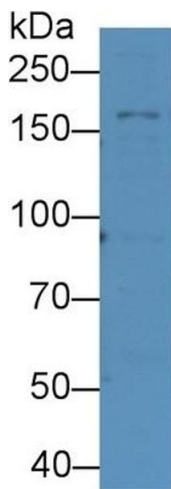
Handling

Format:	Liquid
Buffer:	PBS, pH 7.4, containing 0.02 % Sodium azide, 50 % glycerol.
Preservative:	Sodium azide
Precaution of Use:	This product contains Sodium azide: a POISONOUS AND HAZARDOUS SUBSTANCE which should be handled by trained staff only.
Storage:	4 °C,-20 °C
Storage Comment:	Store at 4°C for frequent use. Stored at -20°C in a manual defrost freezer for two year without detectable loss of activity. Avoid repeated freeze-thaw cycles.
Expiry Date:	24 months



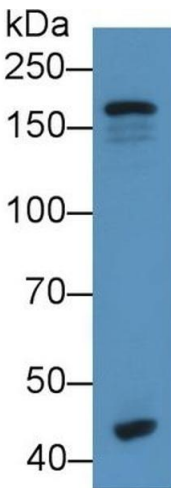
Western Blotting

Image 1. Detection of C3 Convertase in Human Liver lysate using Monoclonal Antibody to Complement C3 Convertase (C3 Convertase)



Western Blotting

Image 2. Detection of C3 Convertase in Human Lung lysate using Monoclonal Antibody to Complement C3 Convertase (C3 Convertase)



Western Blotting

Image 3. Detection of C3 Convertase in Human Serum using Monoclonal Antibody to Complement C3 Convertase (C3 Convertase)