

Datasheet for ABIN7428680
anti-PEDF antibody (AA 19-417)

3 Images

[Go to Product page](#)

Overview

Quantity:	100 µL
Target:	PEDF (SERPINF1)
Binding Specificity:	AA 19-417
Reactivity:	Mouse
Host:	Mouse
Clonality:	Monoclonal
Conjugate:	This PEDF antibody is un-conjugated
Application:	Western Blotting (WB), Immunohistochemistry (IHC), Immunoprecipitation (IP), Immunocytochemistry (ICC)

Product Details

Purpose:	Monoclonal Antibody to Pigment Epithelium Derived Factor (PEDF)
Immunogen:	Recombinant Pigment Epithelium Derived Factor (PEDF) corresponding to Ser19~Thr417 with N-terminal His Tag
Clone:	C3
Isotype:	IgG2b kappa
Specificity:	The antibody is a mouse monoclonal antibody raised against PEDF. It has been selected for its ability to recognize PEDF in immunohistochemical staining and western blotting.
Cross-Reactivity:	Rat
Purification:	Protein A + Protein G affinity chromatography

Target Details

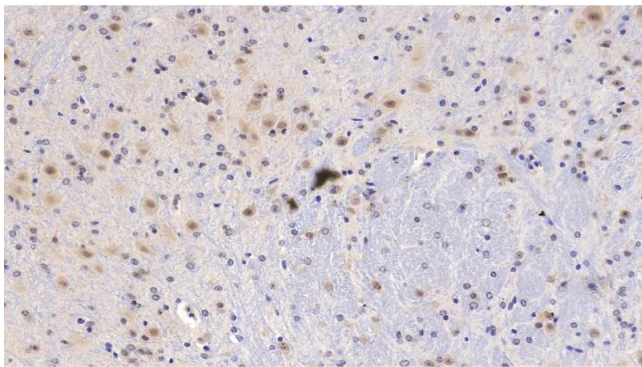
Target:	PEDF (SERPINF1)
Alternative Name:	Pigment Epithelium Derived Factor (SERPINF1 Products)
Background:	SERPINF1, EPC1, PIG35, SDF3, Serpin F1, Cell proliferation-inducing gene 35, Serpin Peptidase Inhibitor, Clade F Member 1 (Alpha-2 Antiplasmin), Stromal Cell Derived Factor 3

Application Details

Application Notes:	Western blotting: 0.5-2 µg/mL Immunohistochemistry: 5-20 µg/mL Immunocytochemistry: 5-20 µg/mL Optimal working dilutions must be determined by end user.
Comment:	The thermal stability is described by the loss rate. The loss rate was determined by accelerated thermal degradation test, that is, incubate the protein at 37°C for 48h, and no obvious degradation and precipitation were observed. The loss rate is less than 5% within the expiration date under appropriate storage condition.
Restrictions:	For Research Use only

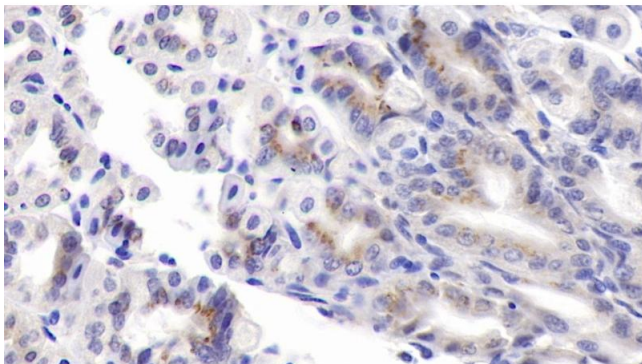
Handling

Format:	Liquid
Buffer:	PBS, pH 7.4, containing 0.02 % Sodium azide, 50 % glycerol.
Preservative:	Sodium azide
Precaution of Use:	This product contains Sodium azide: a POISONOUS AND HAZARDOUS SUBSTANCE which should be handled by trained staff only.
Storage:	4 °C, -20 °C
Storage Comment:	Store at 4°C for frequent use. Stored at -20°C in a manual defrost freezer for two year without detectable loss of activity. Avoid repeated freeze-thaw cycles.
Expiry Date:	24 months



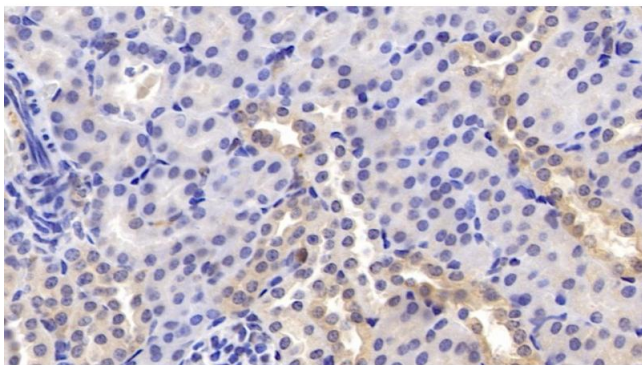
Immunohistochemistry

Image 1. Detection of PEDF in Mouse Cerebellum Tissue using Monoclonal Antibody to Pigment Epithelium Derived Factor (PEDF)



Immunohistochemistry

Image 2. Detection of PEDF in Mouse Stomach Tissue using Monoclonal Antibody to Pigment Epithelium Derived Factor (PEDF)



Immunohistochemistry

Image 3. Detection of PEDF in Mouse Kidney Tissue using Monoclonal Antibody to Pigment Epithelium Derived Factor (PEDF)