

Datasheet for ABIN7428764

## anti-Complement C4d antibody (AA 958-1335)



[Go to Product page](#)

### 1 Image

#### Overview

Quantity:	100 µL
Target:	Complement C4d (C4d)
Binding Specificity:	AA 958-1335
Reactivity:	Human
Host:	Mouse
Clonality:	Monoclonal
Conjugate:	This Complement C4d antibody is un-conjugated
Application:	Immunohistochemistry (IHC), Western Blotting (WB), Immunoprecipitation (IP), Immunocytochemistry (ICC)

#### Product Details

Purpose:	Monoclonal Antibody to Complement Component 4d (C4d)
Immunogen:	Recombinant Complement Component 4d (C4d) corresponding to Leu958~Gly1335 with N-terminal His Tag
Clone:	C1
Isotype:	IgG1 kappa
Specificity:	The antibody is a mouse monoclonal antibody raised against C4d. It has been selected for its ability to recognize C4d in immunohistochemical staining and western blotting.
Purification:	Protein A + Protein G affinity chromatography

## Target Details

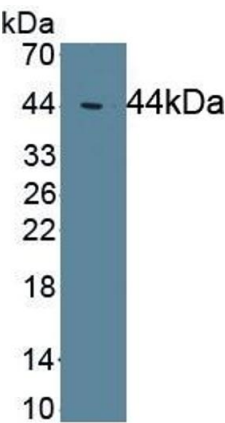
Target:	Complement C4d (C4d)
Alternative Name:	Complement Component 4d ( <a href="#">C4d Products</a> )

## Application Details

Application Notes:	Western blotting: 0.5-2 µg/mL Immunohistochemistry: 5-20 µg/mL Immunocytochemistry: 5-20 µg/mL Optimal working dilutions must be determined by end user.
Comment:	The thermal stability is described by the loss rate. The loss rate was determined by accelerated thermal degradation test, that is, incubate the protein at 37°C for 48h, and no obvious degradation and precipitation were observed. The loss rate is less than 5% within the expiration date under appropriate storage condition.
Restrictions:	For Research Use only

## Handling

Format:	Liquid
Buffer:	PBS, pH 7.4, containing 0.02 % Sodium azide, 50 % glycerol.
Preservative:	Sodium azide
Precaution of Use:	This product contains Sodium azide: a POISONOUS AND HAZARDOUS SUBSTANCE which should be handled by trained staff only.
Storage:	4 °C,-20 °C
Storage Comment:	Store at 4°C for frequent use. Stored at -20°C in a manual defrost freezer for two year without detectable loss of activity. Avoid repeated freeze-thaw cycles.
Expiry Date:	24 months



Western Blotting

**Image 1.** Detection of Recombinant C4d, Human using Monoclonal Antibody to Complement Component 4d (C4d)