



Datasheet for ABIN7428779
anti-SERPINC1 antibody



[Go to Product page](#)

2 Images

Overview

Quantity:	100 µL
Target:	SERPINC1
Reactivity:	Human
Host:	Mouse
Clonality:	Monoclonal
Conjugate:	This SERPINC1 antibody is un-conjugated
Application:	Western Blotting (WB), Immunohistochemistry (IHC), Immunoprecipitation (IP), Immunocytochemistry (ICC)

Product Details

Purpose:	Monoclonal Antibody to Antithrombin (AT)
Immunogen:	Recombinant Antithrombin (AT) corresponding to N-terminal His Tag
Clone:	C2
Isotype:	IgG1 kappa
Specificity:	The antibody is a mouse monoclonal antibody raised against AT. It has been selected for its ability to recognize AT in immunohistochemical staining and western blotting.
Purification:	Protein A + Protein G affinity chromatography

Target Details

Target:	SERPINC1
---------	----------

Target Details

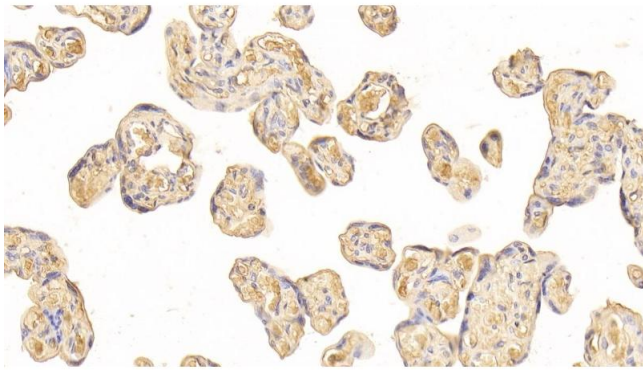
Alternative Name:	Antithrombin (SERPINC1 Products)
Background:	AT3, ATIII, SERPINC1, Anti-Thrombin Antibodies, Serpin Peptidase Inhibitor Clade C Member 1, Coding Sequence Signal Peptide Antithrombin Part 1

Application Details

Application Notes:	Western blotting: 0.5-2 µg/mL Immunohistochemistry: 5-20 µg/mL Immunocytochemistry: 5-20 µg/mL Optimal working dilutions must be determined by end user.
Comment:	The thermal stability is described by the loss rate. The loss rate was determined by accelerated thermal degradation test, that is, incubate the protein at 37°C for 48h, and no obvious degradation and precipitation were observed. The loss rate is less than 5% within the expiration date under appropriate storage condition.
Restrictions:	For Research Use only

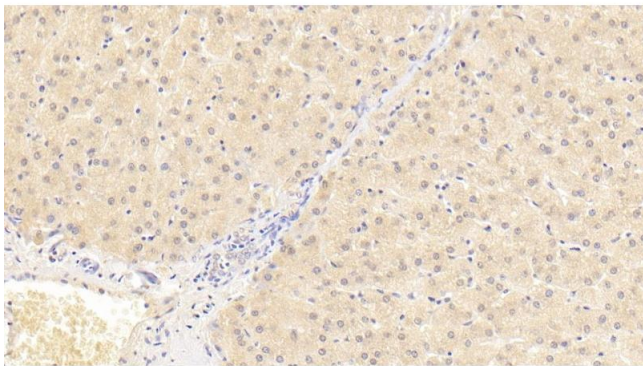
Handling

Format:	Liquid
Buffer:	PBS, pH 7.4, containing 0.02 % Sodium azide, 50 % glycerol.
Preservative:	Sodium azide
Precaution of Use:	This product contains Sodium azide: a POISONOUS AND HAZARDOUS SUBSTANCE which should be handled by trained staff only.
Storage:	4 °C,-20 °C
Storage Comment:	Store at 4°C for frequent use. Stored at -20°C in a manual defrost freezer for two year without detectable loss of activity. Avoid repeated freeze-thaw cycles.
Expiry Date:	24 months



Immunohistochemistry

Image 1. Detection of AT in Human Placenta Tissue using Monoclonal Antibody to Antithrombin (AT)



Immunohistochemistry

Image 2. Detection of AT in Human Liver Tissue using Monoclonal Antibody to Antithrombin (AT)