

Datasheet for ABIN7428965  
**anti-Lamin B1 antibody (AA 52-233)**



[Go to Product page](#)

7 Images

## Overview

Quantity:	100 µL
Target:	Lamin B1 (LMNB1)
Binding Specificity:	AA 52-233
Reactivity:	Human
Host:	Mouse
Clonality:	Monoclonal
Conjugate:	This Lamin B1 antibody is un-conjugated
Application:	Western Blotting (WB)

## Product Details

Purpose:	Anti-Lamin B1 (LMNB1) Monoclonal Antibody
Immunogen:	Recombinant Lamin B1 (LMNB1) corresponding to Ser52~Gly233 with N-terminal His Tag
Specificity:	The antibody is a mouse monoclonal antibody raised against LMNB1. It has been selected for its ability to recognize LMNB1 in immunohistochemical staining and western blotting.
Cross-Reactivity:	Cow, Dog, Goat, Guinea Pig, Rabbit
Purification:	Protein A + Protein G affinity chromatography

## Target Details

Target:	Lamin B1 (LMNB1)
Alternative Name:	Lamin B1 ( <a href="#">LMNB1 Products</a> )

## Target Details

---

Background: LMN, LMN2, LMNB

Pathways: [Apoptosis, Caspase Cascade in Apoptosis](#)

## Application Details

---

Application Notes: Western blotting: 0.001-1 µg/mL Optimal working dilutions must be determined by end user.

Comment: The thermal stability is described by the loss rate. The loss rate was determined by accelerated thermal degradation test, that is, incubate the protein at 37°C for 48h, and no obvious degradation and precipitation were observed. The loss rate is less than 5% within the expiration date under appropriate storage condition.

Restrictions: For Research Use only

## Handling

---

Format: Liquid

Buffer: PBS, pH 7.4, containing 0.02 % Sodium azide, 50 % glycerol.

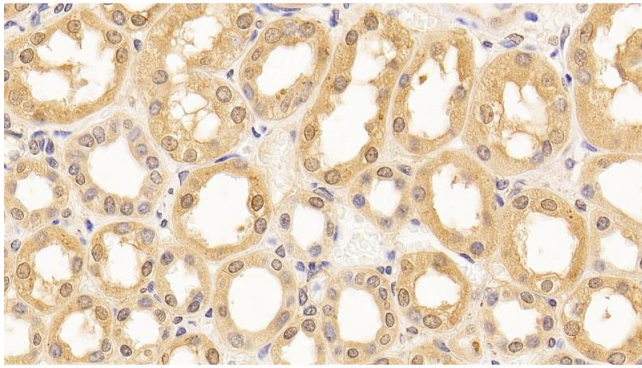
Preservative: Sodium azide

Precaution of Use: This product contains Sodium azide: a POISONOUS AND HAZARDOUS SUBSTANCE which should be handled by trained staff only.

Storage: 4 °C,-20 °C

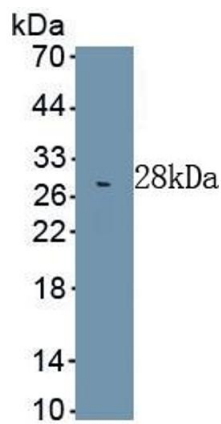
Storage Comment: Store at 4°C for frequent use. Stored at -20°C in a manual defrost freezer for two year without detectable loss of activity. Avoid repeated freeze-thaw cycles.

Expiry Date: 24 months



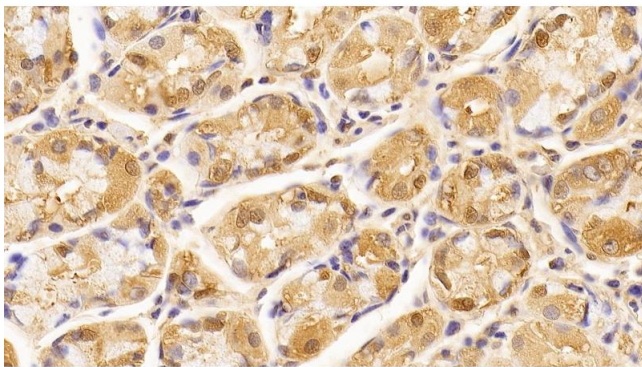
#### Immunohistochemistry

**Image 1.** Detection of LMNB1 in Human Kidney Tissue using Anti-Lamin B1 (LMNB1) Monoclonal Antibody



#### Western Blotting

**Image 2.** Detection of Recombinant LMNB1, Human using Anti-Lamin B1 (LMNB1) Monoclonal Antibody



#### Immunohistochemistry

**Image 3.** Detection of LMNB1 in Human Stomach Tissue using Anti-Lamin B1 (LMNB1) Monoclonal Antibody

Please check the [product details page](#) for more images. Overall 7 images are available for ABIN7428965.