



[Go to Product page](#)

Datasheet for ABIN7429070
anti-PLG antibody (AA 191-433)

4 Images

Overview

Quantity:	100 µL
Target:	PLG
Binding Specificity:	AA 191-433
Reactivity:	Rat
Host:	Rabbit
Clonality:	Polyclonal
Conjugate:	This PLG antibody is un-conjugated
Application:	Western Blotting (WB), Immunohistochemistry (IHC), Immunoprecipitation (IP), Immunocytochemistry (ICC)

Product Details

Purpose:	Polyclonal Antibody to Plasminogen (Plg)
Immunogen:	Recombinant Plasminogen (Plg) corresponding to Glu191~Arg433 (Accession # Q01177)
Isotype:	IgG
Specificity:	The antibody is a rabbit polyclonal antibody raised against Plg. It has been selected for its ability to recognize Plg in immunohistochemical staining and western blotting.
Cross-Reactivity:	Human
Purification:	Antigen-specific affinity chromatography followed by Protein A affinity chromatography

Target Details

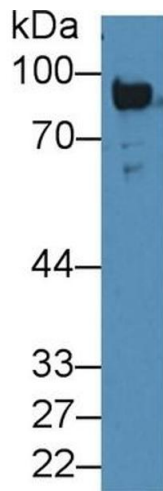
Target:	PLG
Alternative Name:	Plasminogen (PLG Products)
Background:	PL, Plasmin, Activation peptide, Angiostatin
Pathways:	Complement System , Lipid Metabolism

Application Details

Application Notes:	Western blotting: 0.5-2 µg/mL Immunohistochemistry: 5-20 µg/mL Immunocytochemistry: 5-20 µg/mL Optimal working dilutions must be determined by end user.
Comment:	The thermal stability is described by the loss rate. The loss rate was determined by accelerated thermal degradation test, that is, incubate the protein at 37°C for 48h, and no obvious degradation and precipitation were observed. The loss rate is less than 5% within the expiration date under appropriate storage condition.
Restrictions:	For Research Use only

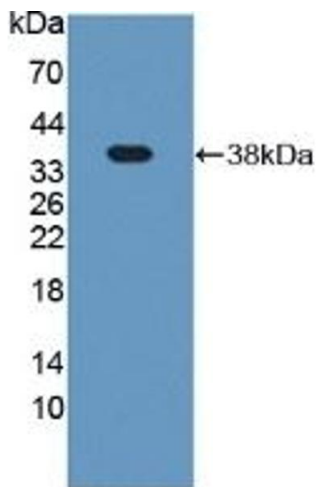
Handling

Format:	Liquid
Buffer:	0.01M PBS, pH 7.4, containing 0.05 % Proclin-300, 50 % glycerol.
Preservative:	ProClin
Precaution of Use:	This product contains ProClin: a POISONOUS AND HAZARDOUS SUBSTANCE which should be handled by trained staff only.
Storage:	4 °C,-20 °C
Storage Comment:	Store at 4°C for frequent use. Stored at -20°C in a manual defrost freezer for two year without detectable loss of activity. Avoid repeated freeze-thaw cycles.
Expiry Date:	24 months



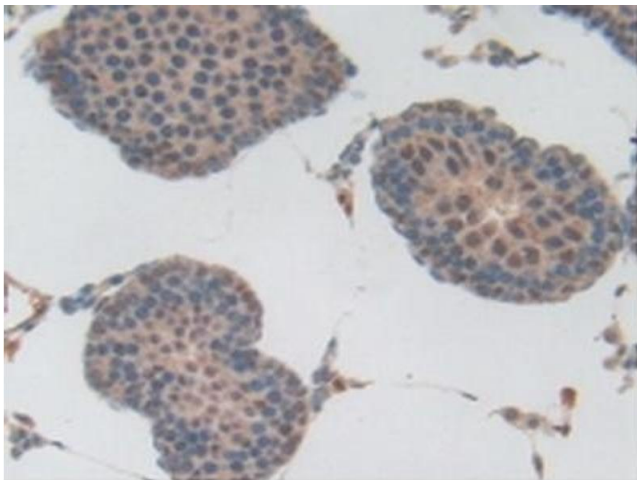
Western Blotting

Image 1. Detection of Plg in Rat Serum using Polyclonal Antibody to Plasminogen (Plg)



Western Blotting

Image 2. Detection of Recombinant Plg, Rat using Polyclonal Antibody to Plasminogen (Plg)



Immunohistochemistry

Image 3. Detection of Plg in Rat Testis Tissue using Polyclonal Antibody to Plasminogen (Plg)

Please check the [product details page](#) for more images. Overall 4 images are available for ABIN7429070.