

Datasheet for ABIN7429085
anti-Lactoferrin antibody (AA 63-193)

3 Images

[Go to Product page](#)

Overview

Quantity:	100 µL
Target:	Lactoferrin (LTF)
Binding Specificity:	AA 63-193
Reactivity:	Mouse
Host:	Rabbit
Clonality:	Polyclonal
Conjugate:	This Lactoferrin antibody is un-conjugated
Application:	Western Blotting (WB), Immunohistochemistry (IHC), Immunoprecipitation (IP), Immunocytochemistry (ICC)

Product Details

Purpose:	Polyclonal Antibody to Lactoferrin (LTF)
Immunogen:	Recombinant Lactoferrin (LTF) corresponding to Cys63~Gly193 with N-terminal His and GST Tag
Isotype:	IgG
Specificity:	The antibody is a rabbit polyclonal antibody raised against LTF. It has been selected for its ability to recognize LTF in immunohistochemical staining and western blotting.
Purification:	Antigen-specific affinity chromatography followed by Protein A affinity chromatography

Target Details

Target:	Lactoferrin (LTF)
---------	-------------------

Target Details

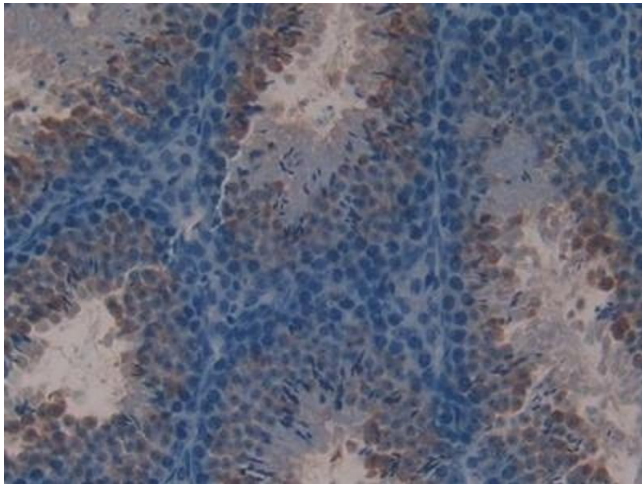
Alternative Name:	Lactoferrin (LTF Products)
Background:	HLF2, LF, GIG12, Lactotransferrin, Growth-inhibiting protein 12, Talalactoferrin, Lfcin-H, Kaliocin-1
Pathways:	Transition Metal Ion Homeostasis

Application Details

Application Notes:	Western blotting: 0.5-5 µg/mL Immunohistochemistry: 5-20 µg/mL Immunocytochemistry: 5-20 µg/mL Optimal working dilutions must be determined by end user.
Comment:	The thermal stability is described by the loss rate. The loss rate was determined by accelerated thermal degradation test, that is, incubate the protein at 37°C for 48h, and no obvious degradation and precipitation were observed. The loss rate is less than 5% within the expiration date under appropriate storage condition.
Restrictions:	For Research Use only

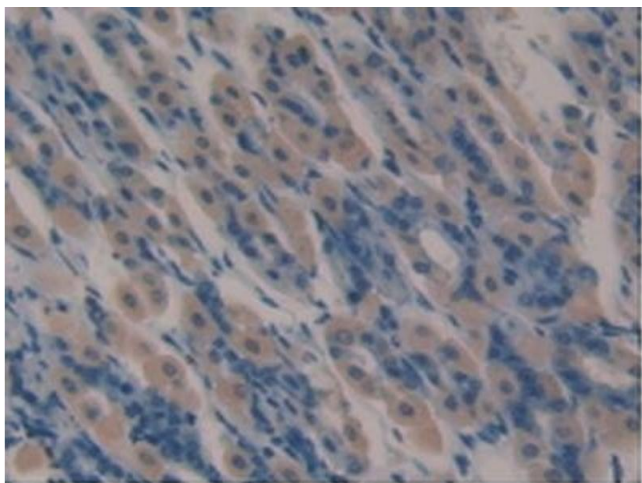
Handling

Format:	Liquid
Buffer:	0.01M PBS, pH 7.4, containing 0.05 % Proclin-300, 50 % glycerol.
Preservative:	ProClin
Precaution of Use:	This product contains ProClin: a POISONOUS AND HAZARDOUS SUBSTANCE which should be handled by trained staff only.
Storage:	4 °C,-20 °C
Storage Comment:	Store at 4°C for frequent use. Stored at -20°C in a manual defrost freezer for two year without detectable loss of activity. Avoid repeated freeze-thaw cycles.
Expiry Date:	24 months



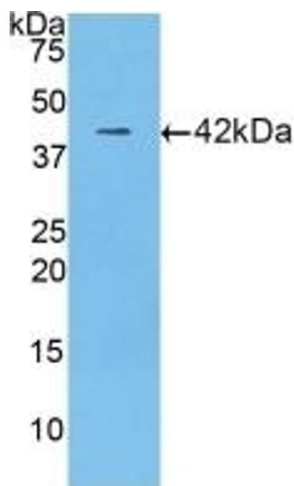
Immunohistochemistry

Image 1. Detection of LTF in Mouse Testis Tissue using Polyclonal Antibody to Lactoferrin (LTF)



Immunohistochemistry

Image 2. Detection of LTF in Mouse Stomach Tissue using Polyclonal Antibody to Lactoferrin (LTF)



Western Blotting

Image 3. Detection of Recombinant LTF, Mouse using Polyclonal Antibody to Lactoferrin (LTF)