

Datasheet for ABIN7429100
anti-Prolactin antibody (AA 29-227)

3 Images

[Go to Product page](#)

Overview

Quantity:	100 µL
Target:	Prolactin (PRL)
Binding Specificity:	AA 29-227
Reactivity:	Human
Host:	Rabbit
Clonality:	Polyclonal
Conjugate:	This Prolactin antibody is un-conjugated
Application:	Western Blotting (WB), Immunohistochemistry (IHC), Immunoprecipitation (IP), Immunocytochemistry (ICC)

Product Details

Purpose:	Polyclonal Antibody to Prolactin (PRL)
Immunogen:	Recombinant Prolactin (PRL) corresponding to Leu29~Cys227 with N-terminal His Tag
Isotype:	IgG
Specificity:	The antibody is a rabbit polyclonal antibody raised against PRL. It has been selected for its ability to recognize PRL in immunohistochemical staining and western blotting.
Cross-Reactivity:	Mouse
Purification:	Antigen-specific affinity chromatography followed by Protein A affinity chromatography

Target Details

Target:	Prolactin (PRL)
Alternative Name:	Prolactin (PRL Products)
Background:	LTH, Luteotropic Hormone
Pathways:	JAK-STAT Signaling , Peptide Hormone Metabolism , Response to Growth Hormone Stimulus , Protein targeting to Nucleus

Application Details

Application Notes:	Western blotting: 0.5-2 µg/mL Immunohistochemistry: 5-20 µg/mL Immunocytochemistry: 5-20 µg/mL Optimal working dilutions must be determined by end user.
Comment:	The thermal stability is described by the loss rate. The loss rate was determined by accelerated thermal degradation test, that is, incubate the protein at 37°C for 48h, and no obvious degradation and precipitation were observed. The loss rate is less than 5% within the expiration date under appropriate storage condition.
Restrictions:	For Research Use only

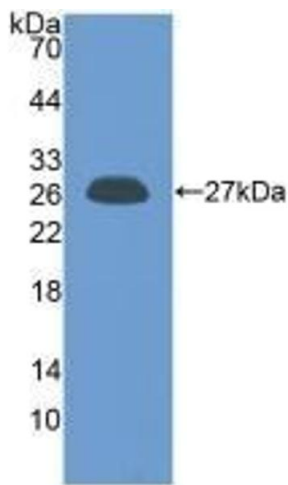
Handling

Format:	Liquid
Buffer:	0.01M PBS, pH 7.4, containing 0.05 % Proclin-300, 50 % glycerol.
Preservative:	ProClin
Precaution of Use:	This product contains ProClin: a POISONOUS AND HAZARDOUS SUBSTANCE which should be handled by trained staff only.
Storage:	4 °C,-20 °C
Storage Comment:	Store at 4°C for frequent use. Stored at -20°C in a manual defrost freezer for two year without detectable loss of activity. Avoid repeated freeze-thaw cycles.
Expiry Date:	24 months



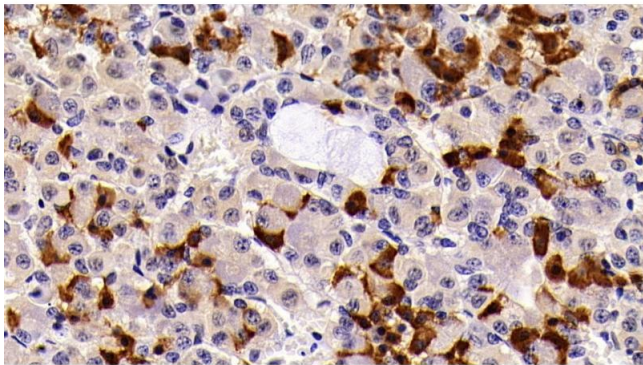
Western Blotting

Image 1. Detection of PRL in Mouse Pituitary lysate using Polyclonal Antibody to Prolactin (PRL)



Western Blotting

Image 2. Detection of Recombinant PRL, Human using Polyclonal Antibody to Prolactin (PRL)



Immunohistochemistry

Image 3. Detection of PRL in Porcine Pituitary Tissue using Polyclonal Antibody to Prolactin (PRL)