

Datasheet for ABIN7429178
anti-Leptin antibody (AA 22-167)

4 Images

[Go to Product page](#)

Overview

Quantity:	100 µL
Target:	Leptin (LEP)
Binding Specificity:	AA 22-167
Reactivity:	Mouse
Host:	Rabbit
Clonality:	Polyclonal
Conjugate:	This Leptin antibody is un-conjugated
Application:	Western Blotting (WB), Immunohistochemistry (IHC), Immunoprecipitation (IP), Immunocytochemistry (ICC)

Product Details

Purpose:	Polyclonal Antibody to Leptin (LEP)
Immunogen:	Recombinant Leptin (LEP) corresponding to Val22~Cys167 with N-terminal His Tag
Isotype:	IgG
Specificity:	The antibody is a rabbit polyclonal antibody raised against LEP. It has been selected for its ability to recognize LEP in immunohistochemical staining and western blotting.
Cross-Reactivity:	Human, Rat
Purification:	Antigen-specific affinity chromatography followed by Protein A affinity chromatography

Target Details

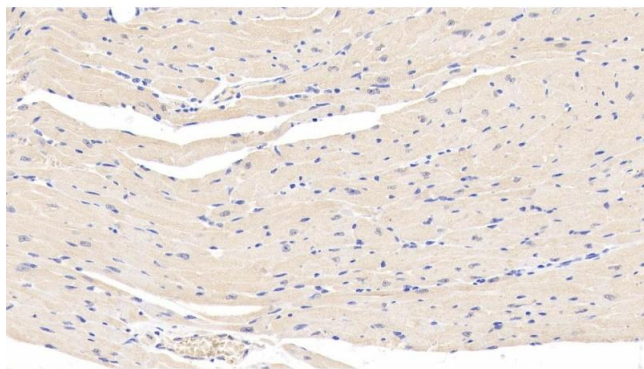
Target:	Leptin (LEP)
Alternative Name:	Leptin (LEP Products)
Background:	OB, OBS, Obesity Homolog, Obesity Factor, Obese Protein
Pathways:	JAK-STAT Signaling , AMPK Signaling , Hormone Transport , Peptide Hormone Metabolism , Hormone Activity , Negative Regulation of Hormone Secretion , Regulation of Carbohydrate Metabolic Process , Feeding Behaviour , Monocarboxylic Acid Catabolic Process

Application Details

Application Notes:	Western blotting: 0.5-2 µg/mL Immunohistochemistry: 5-20 µg/mL Immunocytochemistry: 5-20 µg/mL Optimal working dilutions must be determined by end user.
Comment:	The thermal stability is described by the loss rate. The loss rate was determined by accelerated thermal degradation test, that is, incubate the protein at 37°C for 48h, and no obvious degradation and precipitation were observed. The loss rate is less than 5% within the expiration date under appropriate storage condition.
Restrictions:	For Research Use only

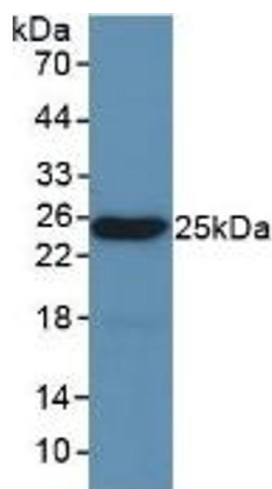
Handling

Format:	Liquid
Buffer:	0.01M PBS, pH 7.4, containing 0.05 % Proclin-300, 50 % glycerol.
Preservative:	ProClin
Precaution of Use:	This product contains ProClin: a POISONOUS AND HAZARDOUS SUBSTANCE which should be handled by trained staff only.
Storage:	4 °C,-20 °C
Storage Comment:	Store at 4°C for frequent use. Stored at -20°C in a manual defrost freezer for two year without detectable loss of activity. Avoid repeated freeze-thaw cycles.
Expiry Date:	24 months



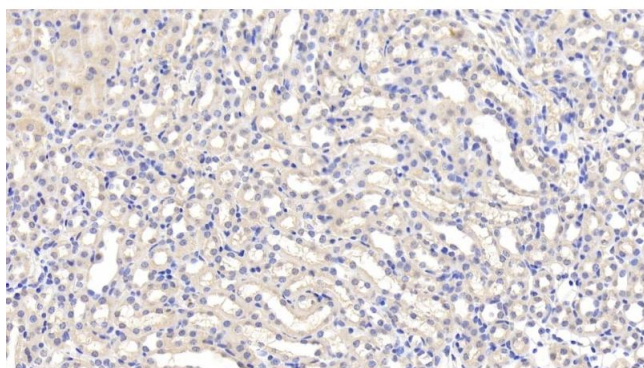
Immunohistochemistry

Image 1. Detection of LEP in Mouse Cardiac Muscle Tissue using Polyclonal Antibody to Leptin (LEP)



Western Blotting

Image 2. Detection of Recombinant LEP, Mouse using Polyclonal Antibody to Leptin (LEP)



Immunohistochemistry

Image 3. Detection of LEP in Mouse Kidney Tissue using Polyclonal Antibody to Leptin (LEP)

Please check the [product details page](#) for more images. Overall 4 images are available for ABIN7429178.