



[Go to Product page](#)

Datasheet for ABIN7429316  
**anti-EGF antibody (AA 609-751)**

3 Images

### Overview

Quantity:	100 µL
Target:	EGF
Binding Specificity:	AA 609-751
Reactivity:	Human
Host:	Rabbit
Clonality:	Polyclonal
Conjugate:	This EGF antibody is un-conjugated
Application:	Western Blotting (WB), Immunohistochemistry (IHC), Immunoprecipitation (IP), Immunocytochemistry (ICC)

### Product Details

Purpose:	Polyclonal Antibody to Epidermal Growth Factor (EGF)
Immunogen:	Recombinant Epidermal Growth Factor (EGF) corresponding to Ala609~Gly751 with N-terminal His Tag
Isotype:	IgG
Specificity:	The antibody is a rabbit polyclonal antibody raised against EGF. It has been selected for its ability to recognize EGF in immunohistochemical staining and western blotting.
Purification:	Antigen-specific affinity chromatography followed by Protein A affinity chromatography

### Target Details

Target:	EGF
---------	-----

## Target Details

---

Alternative Name:	Epidermal Growth Factor ( <a href="#">EGF Products</a> )
Background:	URG, Beta-Urogastrone, Pro-epidermal growth factor
Pathways:	<a href="#">NF-kappaB Signaling</a> , <a href="#">RTK Signaling</a> , <a href="#">Fc-epsilon Receptor Signaling Pathway</a> , <a href="#">EGFR Signaling Pathway</a> , <a href="#">Neurotrophin Signaling Pathway</a> , <a href="#">Regulation of Carbohydrate Metabolic Process</a> , <a href="#">Hepatitis C</a> , <a href="#">Protein targeting to Nucleus</a> , <a href="#">Interaction of EGFR with phospholipase C-gamma</a> , <a href="#">Thromboxane A2 Receptor Signaling</a> , <a href="#">EGFR Downregulation</a>

## Application Details

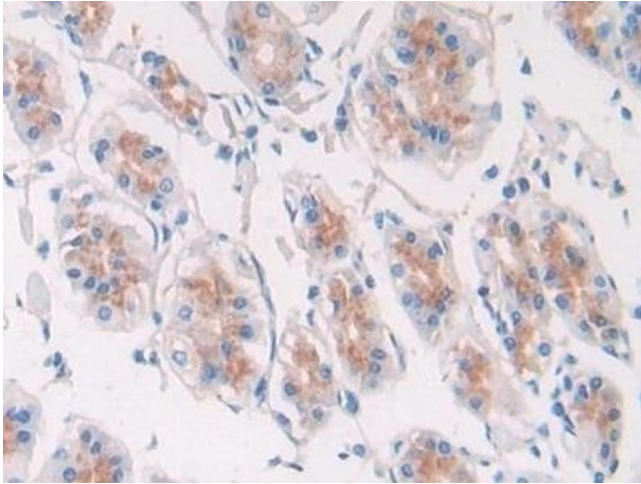
---

Application Notes:	Western blotting: 0.5-3 µg/mL Immunohistochemistry: 5-30 µg/mL Immunocytochemistry: 5-30 µg/mL Optimal working dilutions must be determined by end user.
Comment:	The thermal stability is described by the loss rate. The loss rate was determined by accelerated thermal degradation test, that is, incubate the protein at 37°C for 48h, and no obvious degradation and precipitation were observed. The loss rate is less than 5% within the expiration date under appropriate storage condition.
Restrictions:	For Research Use only

## Handling

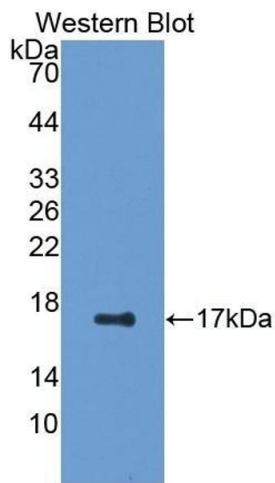
---

Format:	Liquid
Buffer:	PBS, pH 7.4, containing 0.02 % Sodium azide, 50 % glycerol.
Preservative:	Sodium azide
Precaution of Use:	This product contains Sodium azide: a POISONOUS AND HAZARDOUS SUBSTANCE which should be handled by trained staff only.
Storage:	4 °C,-20 °C
Storage Comment:	Store at 4°C for frequent use. Stored at -20°C in a manual defrost freezer for two year without detectable loss of activity. Avoid repeated freeze-thaw cycles.
Expiry Date:	24 months



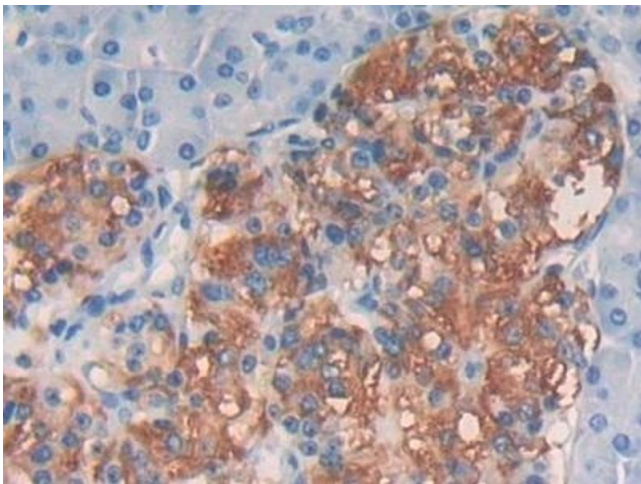
### Immunohistochemistry

**Image 1.** Detection of EGF in Human Stomach Tissue using Polyclonal Antibody to Epidermal Growth Factor (EGF)



### Western Blotting

**Image 2.** Detection of Recombinant EGF, Human using Polyclonal Antibody to Epidermal Growth Factor (EGF)



### Immunohistochemistry

**Image 3.** Detection of EGF in Human Pancreas Tissue using Polyclonal Antibody to Epidermal Growth Factor (EGF)