



[Go to Product page](#)

Datasheet for ABIN7429331
anti-LYZ antibody (AA 19-148)

4 Images

Overview

Quantity:	100 µL
Target:	LYZ
Binding Specificity:	AA 19-148
Reactivity:	Rat
Host:	Rabbit
Clonality:	Polyclonal
Conjugate:	This LYZ antibody is un-conjugated
Application:	Western Blotting (WB), Immunohistochemistry (IHC), Immunoprecipitation (IP), Immunocytochemistry (ICC)

Product Details

Purpose:	Polyclonal Antibody to Lysozyme (LZM)
Immunogen:	Recombinant Lysozyme (LZM) corresponding to Lys19~Val148 (Accession # P00697)
Isotype:	IgG
Specificity:	The antibody is a rabbit polyclonal antibody raised against LZM. It has been selected for its ability to recognize LZM in immunohistochemical staining and western blotting.
Cross-Reactivity:	Cow, Human, Mouse
Purification:	Antigen-specific affinity chromatography followed by Protein A affinity chromatography

Target Details

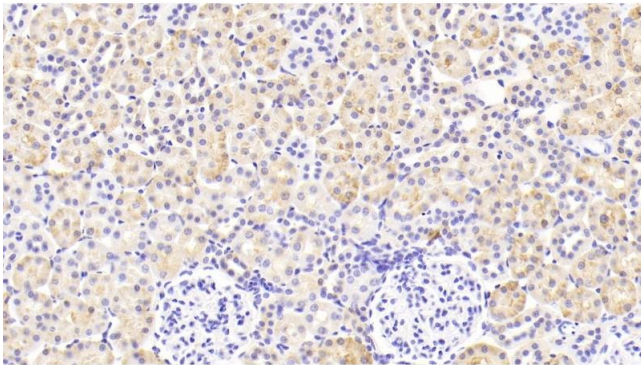
Target:	LYZ
Alternative Name:	Lysozyme (LYZ Products)
Background:	LYZ, Renal Amyloidosis, N-Acetylmuramide Glycanhydrolase, Muramidase, 1,4-beta-N-acetylmuramidase C

Application Details

Application Notes:	Western blotting: 0.5-2 µg/mL Immunohistochemistry: 5-20 µg/mL Immunocytochemistry: 5-20 µg/mL Optimal working dilutions must be determined by end user.
Comment:	The thermal stability is described by the loss rate. The loss rate was determined by accelerated thermal degradation test, that is, incubate the protein at 37°C for 48h, and no obvious degradation and precipitation were observed. The loss rate is less than 5% within the expiration date under appropriate storage condition.
Restrictions:	For Research Use only

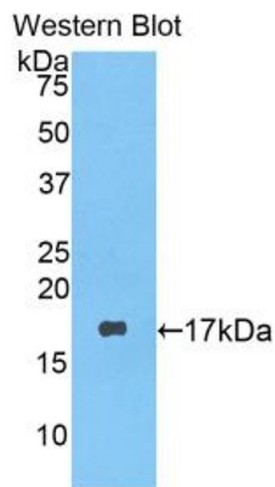
Handling

Format:	Liquid
Buffer:	PBS, pH 7.4, containing 0.02 % Sodium azide, 50 % glycerol.
Preservative:	Sodium azide
Precaution of Use:	This product contains Sodium azide: a POISONOUS AND HAZARDOUS SUBSTANCE which should be handled by trained staff only.
Storage:	4 °C,-20 °C
Storage Comment:	Store at 4°C for frequent use. Stored at -20°C in a manual defrost freezer for two year without detectable loss of activity. Avoid repeated freeze-thaw cycles.
Expiry Date:	24 months



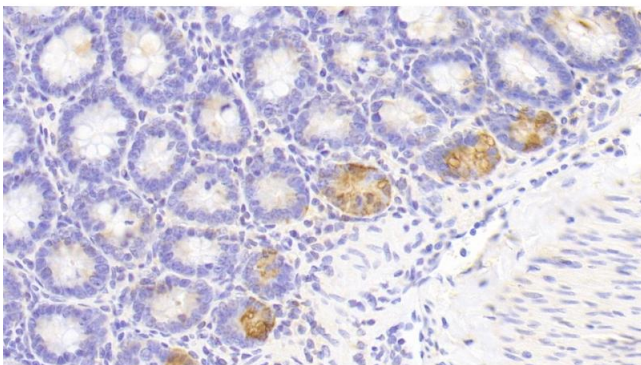
Immunohistochemistry

Image 1. Detection of LZM in Rat Kidney Tissue using Polyclonal Antibody to Lysozyme (LZM)



Western Blotting

Image 2. Detection of Recombinant LZM, Rat using Polyclonal Antibody to Lysozyme (LZM)



Immunohistochemistry

Image 3. Detection of LZM in Rat Small intestine Tissue using Polyclonal Antibody to Lysozyme (LZM)

Please check the [product details page](#) for more images. Overall 4 images are available for ABIN7429331.