

Datasheet for ABIN7429358
anti-LIPC antibody (AA 159-415)

3 Images

[Go to Product page](#)

Overview

Quantity:	100 µL
Target:	LIPC
Binding Specificity:	AA 159-415
Reactivity:	Mouse
Host:	Rabbit
Clonality:	Polyclonal
Conjugate:	This LIPC antibody is un-conjugated
Application:	Western Blotting (WB), Immunohistochemistry (IHC), Immunocytochemistry (ICC), Immunoprecipitation (IP)

Product Details

Purpose:	Polyclonal Antibody to Lipase, Hepatic (LIPC)
Immunogen:	Recombinant Lipase, Hepatic (LIPC) corresponding to Ser159~Ile415 with N-terminal His and GST Tag
Isotype:	IgG
Specificity:	The antibody is a rabbit polyclonal antibody raised against LIPC. It has been selected for its ability to recognize LIPC in immunohistochemical staining and western blotting.
Cross-Reactivity:	Rat
Purification:	Antigen-specific affinity chromatography followed by Protein A affinity chromatography

Target Details

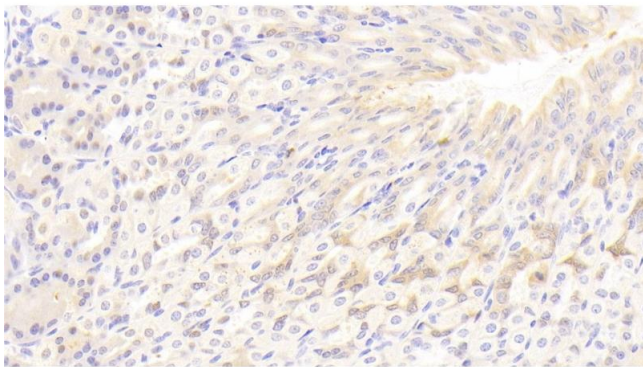
Target:	LIPC
Alternative Name:	Lipase, Hepatic (LIPC Products)
Background:	HL, HTGL, Hepatic Lipase, Hepatic triacylglycerol lipase, Lipase member C
Pathways:	Lipid Metabolism

Application Details

Application Notes:	Western blotting: 0.5-2 µg/mL Immunohistochemistry: 5-20 µg/mL Immunocytochemistry: 5-20 µg/mL Optimal working dilutions must be determined by end user.
Comment:	The thermal stability is described by the loss rate. The loss rate was determined by accelerated thermal degradation test, that is, incubate the protein at 37°C for 48h, and no obvious degradation and precipitation were observed. The loss rate is less than 5% within the expiration date under appropriate storage condition.
Restrictions:	For Research Use only

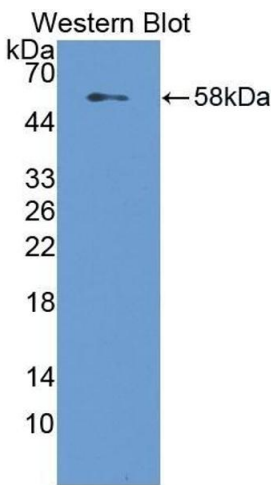
Handling

Format:	Liquid
Buffer:	PBS, pH 7.4, containing 0.02 % Sodium azide, 50 % glycerol.
Preservative:	Sodium azide
Precaution of Use:	This product contains Sodium azide: a POISONOUS AND HAZARDOUS SUBSTANCE which should be handled by trained staff only.
Storage:	4 °C,-20 °C
Storage Comment:	Store at 4°C for frequent use. Stored at -20°C in a manual defrost freezer for two year without detectable loss of activity. Avoid repeated freeze-thaw cycles.
Expiry Date:	24 months



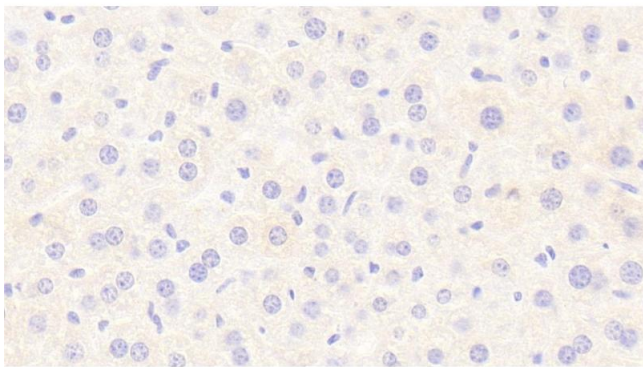
Immunohistochemistry

Image 1. Detection of LIPC in Mouse Stomach Tissue using Polyclonal Antibody to Lipase, Hepatic (LIPC)



Western Blotting

Image 2. Detection of Recombinant LIPC, Mouse using Polyclonal Antibody to Lipase, Hepatic (LIPC)



Immunohistochemistry

Image 3. Detection of LIPC in Mouse Liver Tissue using Polyclonal Antibody to Lipase, Hepatic (LIPC)