

Datasheet for ABIN7429361
anti-LIPG antibody (AA 175-412)[Go to Product page](#)

4 Images

Overview

Quantity:	100 µL
Target:	LIPG
Binding Specificity:	AA 175-412
Reactivity:	Human
Host:	Rabbit
Clonality:	Polyclonal
Conjugate:	This LIPG antibody is un-conjugated
Application:	Western Blotting (WB), ELISA, Immunohistochemistry (Paraffin-embedded Sections) (IHC (p)), Immunocytochemistry (ICC), Immunohistochemistry (Frozen Sections) (IHC (fro))

Product Details

Purpose:	Polyclonal Antibody to Lipase, Endothelial (LIPG)
Immunogen:	Recombinant Lipase, Endothelial (LIPG) corresponding to Ala175~Ile412 (Accession # Q9Y5X9)
Isotype:	IgG
Specificity:	The antibody is a rabbit polyclonal antibody raised against LIPG. It has been selected for its ability to recognize LIPG in immunohistochemical staining and western blotting.
Purification:	Antigen-specific affinity chromatography followed by Protein A affinity chromatography

Target Details

Target:	LIPG
---------	------

Target Details

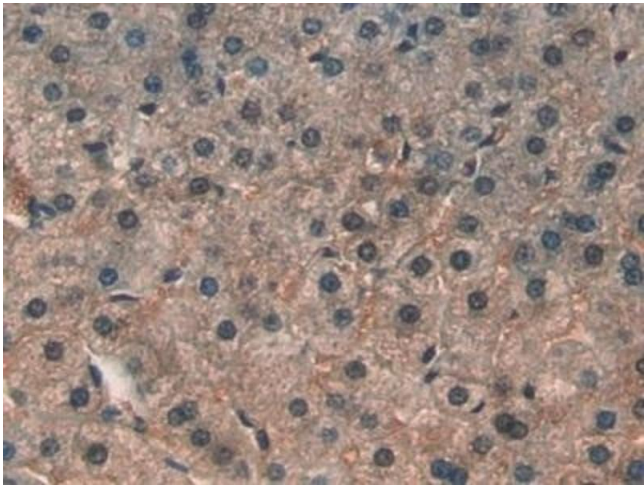
Alternative Name:	Lipase, Endothelial (LIPG Products)
Background:	EL, EDL, Endothelial Lipase, Endothelial cell-derived lipase

Application Details

Application Notes:	Western blotting: 1-5 µg/mL Immunocytochemistry in formalin fixed cells: 5-20 µg/mL Immunohistochemistry in formalin fixed frozen section: 5-20 µg/mL Immunohistochemistry in paraffin section: 5-20 µg/mL Enzyme-linked Immunosorbent Assay: 0.05-2 µg/mL Optimal working dilutions must be determined by end user.
Comment:	The thermal stability is described by the loss rate. The loss rate was determined by accelerated thermal degradation test, that is, incubate the protein at 37°C for 48h, and no obvious degradation and precipitation were observed. The loss rate is less than 5% within the expiration date under appropriate storage condition.
Restrictions:	For Research Use only

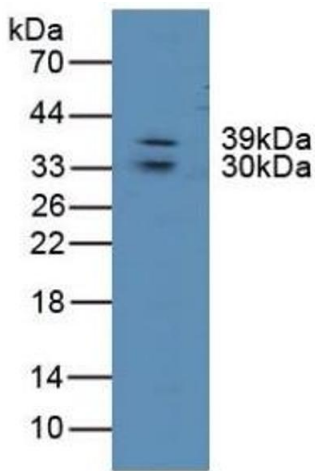
Handling

Format:	Liquid
Buffer:	0.01M PBS, pH 7.4, containing 0.05 % Proclin-300, 50 % glycerol.
Preservative:	ProClin
Precaution of Use:	This product contains ProClin: a POISONOUS AND HAZARDOUS SUBSTANCE which should be handled by trained staff only.
Storage:	4 °C,-20 °C
Storage Comment:	Store at 4°C for frequent use. Stored at -20°C in a manual defrost freezer for two year without detectable loss of activity. Avoid repeated freeze-thaw cycles.
Expiry Date:	24 months



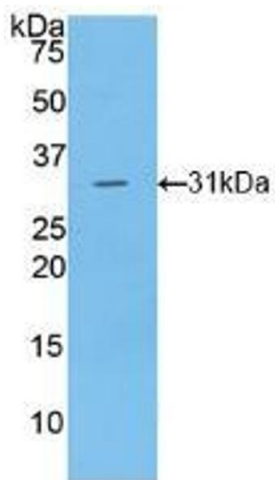
Immunohistochemistry

Image 1. Detection of LIPG in Human Liver Tissue using Polyclonal Antibody to Lipase, Endothelial (LIPG)



Western Blotting

Image 2. Detection of LIPG in Human Lung Tissue using Polyclonal Antibody to Lipase, Endothelial (LIPG)



Western Blotting

Image 3. Detection of Recombinant LIPG, Human using Polyclonal Antibody to Lipase, Endothelial (LIPG)

Please check the [product details page](#) for more images. Overall 4 images are available for ABIN7429361.