

Datasheet for ABIN7429373

anti-Lipoprotein Lipase antibody (AA 28-474)**4** Images[Go to Product page](#)

Overview

Quantity:	100 µL
Target:	Lipoprotein Lipase (LPL)
Binding Specificity:	AA 28-474
Reactivity:	Rat
Host:	Rabbit
Clonality:	Polyclonal
Conjugate:	This Lipoprotein Lipase antibody is un-conjugated
Application:	Western Blotting (WB), Immunohistochemistry (IHC), Immunoprecipitation (IP), Immunocytochemistry (ICC)

Product Details

Purpose:	Polyclonal Antibody to Lipoprotein lipase (LPL)
Immunogen:	Recombinant Lipoprotein lipase (LPL) corresponding to Ala28~Gly474 with N-terminal His Tag
Isotype:	IgG
Specificity:	The antibody is a rabbit polyclonal antibody raised against LPL. It has been selected for its ability to recognize LPL in immunohistochemical staining and western blotting.
Cross-Reactivity:	Human, Mouse
Purification:	Antigen-specific affinity chromatography followed by Protein A affinity chromatography

Target Details

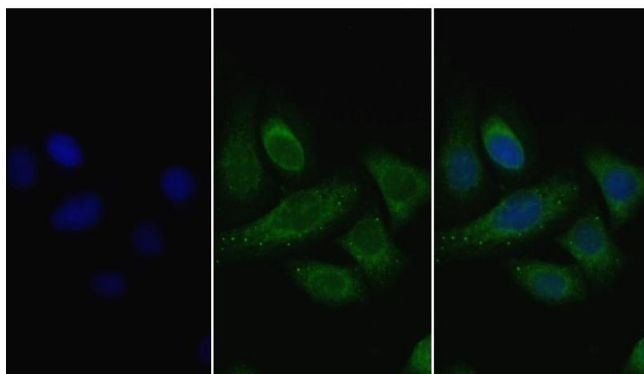
Target:	Lipoprotein Lipase (LPL)
Alternative Name:	Lipoprotein lipase (LPL Products)
Background:	LIPD, Lipase, Lipoprotein
Pathways:	Lipid Metabolism

Application Details

Application Notes:	Western blotting: 0.5-2 µg/mL Immunohistochemistry: 5-20 µg/mL Immunocytochemistry: 5-20 µg/mL Optimal working dilutions must be determined by end user.
Comment:	The thermal stability is described by the loss rate. The loss rate was determined by accelerated thermal degradation test, that is, incubate the protein at 37°C for 48h, and no obvious degradation and precipitation were observed. The loss rate is less than 5% within the expiration date under appropriate storage condition.
Restrictions:	For Research Use only

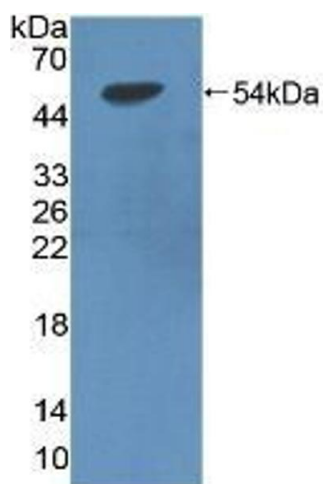
Handling

Format:	Liquid
Buffer:	PBS, pH 7.4, containing 0.02 % Sodium azide, 50 % glycerol.
Preservative:	Sodium azide
Precaution of Use:	This product contains Sodium azide: a POISONOUS AND HAZARDOUS SUBSTANCE which should be handled by trained staff only.
Storage:	4 °C,-20 °C
Storage Comment:	Store at 4°C for frequent use. Stored at -20°C in a manual defrost freezer for two year without detectable loss of activity. Avoid repeated freeze-thaw cycles.
Expiry Date:	24 months



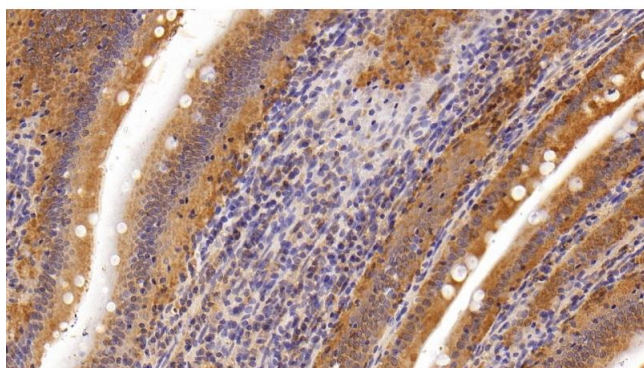
Immunohistochemistry

Image 1. Detection of LPL in Human HeLa cell using Polyclonal Antibody to Lipoprotein lipase (LPL)



Western Blotting

Image 2. Detection of Recombinant LPL, Rat using Polyclonal Antibody to Lipoprotein lipase (LPL)



Immunohistochemistry

Image 3. Detection of LPL in Rat Small intestine Tissue using Polyclonal Antibody to Lipoprotein lipase (LPL)

Please check the [product details page](#) for more images. Overall 4 images are available for ABIN7429373.