

Datasheet for ABIN7429478
anti-TGFB1 antibody (AA 279-390)



[Go to Product page](#)

2 Images

Overview

Quantity:	100 µL
Target:	TGFB1
Binding Specificity:	AA 279-390
Reactivity:	Dog
Host:	Rabbit
Clonality:	Polyclonal
Conjugate:	This TGFB1 antibody is un-conjugated
Application:	Western Blotting (WB), Immunohistochemistry (IHC), Immunoprecipitation (IP), Immunocytochemistry (ICC)

Product Details

Purpose:	Polyclonal Antibody to Transforming Growth Factor Beta 1 (TGFb1)
Immunogen:	Recombinant Transforming Growth Factor Beta 1 (TGFb1) corresponding to Ala279~Ser390 (Accession # P54831) with N-terminal His and GST Tag
Isotype:	IgG
Specificity:	The antibody is a rabbit polyclonal antibody raised against TGFb1. It has been selected for its ability to recognize TGFb1 in immunohistochemical staining and western blotting.
Cross-Reactivity:	Human, Mouse, Rat
Purification:	Antigen-specific affinity chromatography followed by Protein A affinity chromatography

Target Details

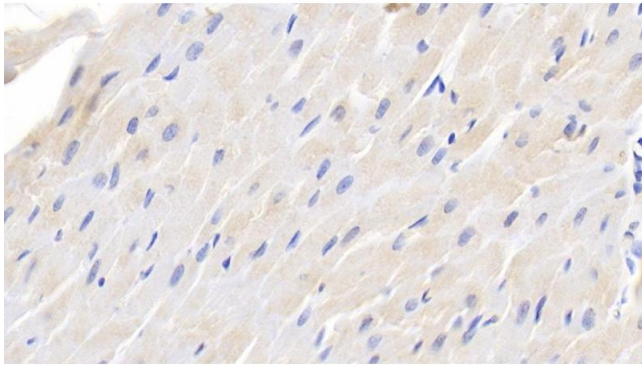
Target:	TGFB1
Alternative Name:	Transforming Growth Factor Beta 1 (TGFB1 Products)
Background:	TGF-B1, CED, DPD1, LAP, Camurati-Engelmann Disease, Latency-associated peptide
Pathways:	EGFR Signaling Pathway , Dopaminergic Neurogenesis , Cellular Response to Molecule of Bacterial Origin , Glycosaminoglycan Metabolic Process , Regulation of Leukocyte Mediated Immunity , Regulation of Muscle Cell Differentiation , Positive Regulation of Immune Effector Process , Cell-Cell Junction Organization , Production of Molecular Mediator of Immune Response , Ribonucleoside Biosynthetic Process , Skeletal Muscle Fiber Development , Regulation of Carbohydrate Metabolic Process , Protein targeting to Nucleus , Autophagy , Cancer Immune Checkpoints

Application Details

Application Notes:	Western blotting: 0.5-2 µg/mL Immunohistochemistry: 5-20 µg/mL Immunocytochemistry: 5-20 µg/mL Optimal working dilutions must be determined by end user.
Comment:	The thermal stability is described by the loss rate. The loss rate was determined by accelerated thermal degradation test, that is, incubate the protein at 37°C for 48h, and no obvious degradation and precipitation were observed. The loss rate is less than 5% within the expiration date under appropriate storage condition.
Restrictions:	For Research Use only

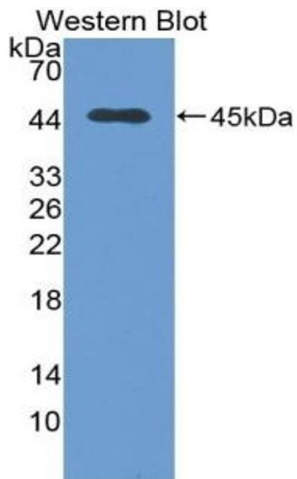
Handling

Format:	Liquid
Buffer:	PBS, pH 7.4, containing 0.02 % Sodium azide, 50 % glycerol.
Preservative:	Sodium azide
Precaution of Use:	This product contains Sodium azide: a POISONOUS AND HAZARDOUS SUBSTANCE which should be handled by trained staff only.
Storage:	4 °C,-20 °C
Storage Comment:	Store at 4°C for frequent use. Stored at -20°C in a manual defrost freezer for two year without detectable loss of activity. Avoid repeated freeze-thaw cycles.



Immunohistochemistry

Image 1. Detection of TGFβ1 in Canine Cardiac Muscle Tissue using Polyclonal Antibody to Transforming Growth Factor Beta 1 (TGFβ1)



Western Blotting

Image 2. Detection of Recombinant TGFβ1, Canine using Polyclonal Antibody to Transforming Growth Factor Beta 1 (TGFβ1)