



[Go to Product page](#)

Datasheet for ABIN7429514  
**anti-IgE antibody (AA 1-421)**

1 Image

### Overview

Quantity:	100 µL
Target:	IgE
Binding Specificity:	AA 1-421
Reactivity:	Mouse
Host:	Rabbit
Clonality:	Polyclonal
Conjugate:	This IgE antibody is un-conjugated
Application:	Western Blotting (WB), Immunocytochemistry (ICC), Immunohistochemistry (IHC), Immunoprecipitation (IP)

### Product Details

Purpose:	Polyclonal Antibody to Immunoglobulin E (IgE)
Immunogen:	Recombinant Immunoglobulin E (IgE) corresponding to Ser1~Ser421 with N-terminal His Tag
Isotype:	IgG
Specificity:	The antibody is a rabbit polyclonal antibody raised against IgE. It has been selected for its ability to recognize IgE in immunohistochemical staining and western blotting.
Cross-Reactivity:	Human, Rat
Purification:	Antigen-specific affinity chromatography followed by Protein A affinity chromatography

## Target Details

---

Target:	IgE
Alternative Name:	Immunoglobulin E ( <a href="#">IgE Products</a> )
Background:	IGHE, Immunoglobulin Heavy Constant Epsilon, Ig epsilon chain C region

## Application Details

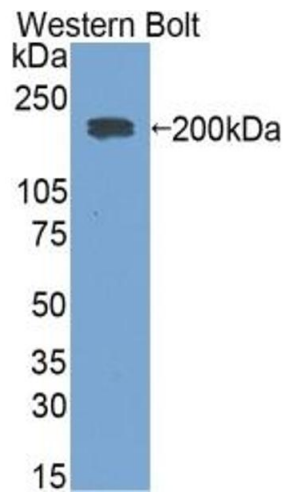
---

Application Notes:	Western blotting: 0.5-2 µg/mL Immunohistochemistry: 5-20 µg/mL Immunocytochemistry: 5-20 µg/mL Optimal working dilutions must be determined by end user.
Comment:	The thermal stability is described by the loss rate. The loss rate was determined by accelerated thermal degradation test, that is, incubate the protein at 37°C for 48h, and no obvious degradation and precipitation were observed. The loss rate is less than 5% within the expiration date under appropriate storage condition.
Restrictions:	For Research Use only

## Handling

---

Format:	Liquid
Buffer:	0.01M PBS, pH 7.4, containing 0.05 % Proclin-300, 50 % glycerol.
Preservative:	ProClin
Precaution of Use:	This product contains ProClin: a POISONOUS AND HAZARDOUS SUBSTANCE which should be handled by trained staff only.
Storage:	4 °C,-20 °C
Storage Comment:	Store at 4°C for frequent use. Stored at -20°C in a manual defrost freezer for two year without detectable loss of activity. Avoid repeated freeze-thaw cycles.
Expiry Date:	24 months



### Western Blotting

**Image 1.** Detection of Recombinant IgE, Mouse using Polyclonal Antibody to Immunoglobulin E (IgE)