

Datasheet for ABIN7429679
anti-CGRP antibody (AA 1-130)[Go to Product page](#)

3 Images

Overview

Quantity:	100 µL
Target:	CGRP (CALCA)
Binding Specificity:	AA 1-130
Reactivity:	Mouse
Host:	Rabbit
Clonality:	Polyclonal
Conjugate:	This CGRP antibody is un-conjugated
Application:	Immunohistochemistry (IHC), Western Blotting (WB), Immunoprecipitation (IP), Immunocytochemistry (ICC)

Product Details

Purpose:	Polyclonal Antibody to Calcitonin Gene Related Peptide (CGRP)
Immunogen:	Recombinant Calcitonin Gene Related Peptide (CGRP) corresponding to Met1~Ala130 with N-terminal His and GST Tag
Isotype:	IgG
Specificity:	The antibody is a rabbit polyclonal antibody raised against CGRP. It has been selected for its ability to recognize CGRP in immunohistochemical staining and western blotting.
Purification:	Antigen-specific affinity chromatography followed by Protein A affinity chromatography

Target Details

Target:	CGRP (CALCA)
---------	--------------

Target Details

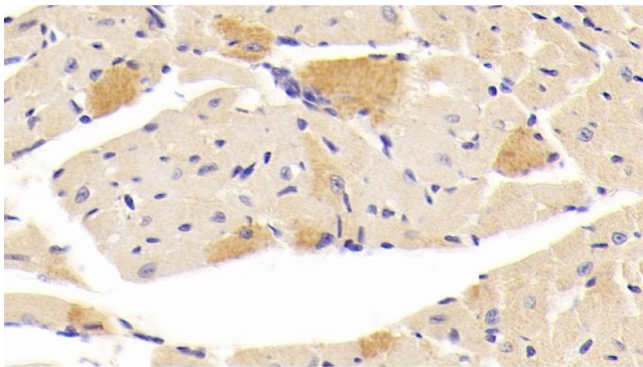
Alternative Name:	Calcitonin Gene Related Peptide (CALCA Products)
Background:	CALCB, CGRP2, CALC2, CGRP-II, Calcitonin Gene Related Peptide 2, Calcitonin 2, Calcitonin Related Polypeptide Beta
Pathways:	Hormone Activity , cAMP Metabolic Process , Myometrial Relaxation and Contraction , Regulation of G-Protein Coupled Receptor Protein Signaling , Skeletal Muscle Fiber Development , Feeding Behaviour

Application Details

Application Notes:	Western blotting: 0.5-2 µg/mL Immunohistochemistry: 5-20 µg/mL Immunocytochemistry: 5-20 µg/mL Optimal working dilutions must be determined by end user.
Comment:	The thermal stability is described by the loss rate. The loss rate was determined by accelerated thermal degradation test, that is, incubate the protein at 37°C for 48h, and no obvious degradation and precipitation were observed. The loss rate is less than 5% within the expiration date under appropriate storage condition.
Restrictions:	For Research Use only

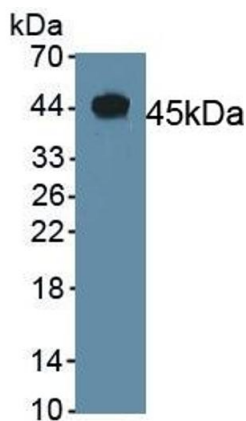
Handling

Format:	Liquid
Buffer:	PBS, pH 7.4, containing 0.02 % Sodium azide, 50 % glycerol.
Preservative:	Sodium azide
Precaution of Use:	This product contains Sodium azide: a POISONOUS AND HAZARDOUS SUBSTANCE which should be handled by trained staff only.
Storage:	4 °C,-20 °C
Storage Comment:	Store at 4°C for frequent use. Stored at -20°C in a manual defrost freezer for two year without detectable loss of activity. Avoid repeated freeze-thaw cycles.
Expiry Date:	24 months



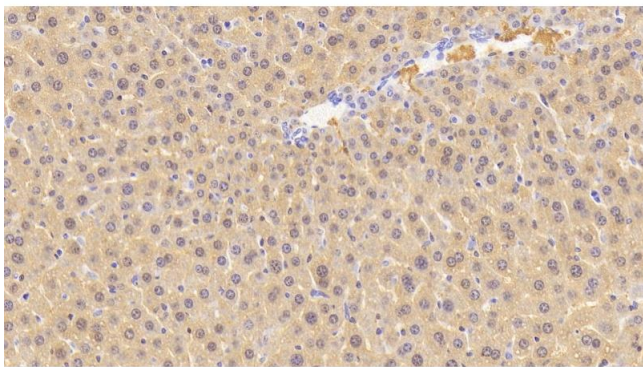
Immunohistochemistry

Image 1. Detection of CGRP in Mouse Cardiac Muscle Tissue using Polyclonal Antibody to Calcitonin Gene Related Peptide (CGRP)



Western Blotting

Image 2. Detection of Recombinant CGRP, Mouse using Polyclonal Antibody to Calcitonin Gene Related Peptide (CGRP)



Immunohistochemistry

Image 3. Detection of CGRP in Mouse Liver Tissue using Polyclonal Antibody to Calcitonin Gene Related Peptide (CGRP)