

Datasheet for ABIN7429688

**anti-Chitotriosidase 1 antibody (AA 210-464)****2** Images[Go to Product page](#)

## Overview

Quantity:	100 µL
Target:	Chitotriosidase 1 (CHIT1)
Binding Specificity:	AA 210-464
Reactivity:	Mouse
Host:	Rabbit
Clonality:	Polyclonal
Conjugate:	This Chitotriosidase 1 antibody is un-conjugated
Application:	Western Blotting (WB), Immunohistochemistry (IHC), Immunoprecipitation (IP), Immunocytochemistry (ICC)

## Product Details

Purpose:	Polyclonal Antibody to Chitinase 1 (CHIT1)
Immunogen:	Recombinant Chitinase 1 (CHIT1) corresponding to Met210~Ser464
Isotype:	IgG
Specificity:	The antibody is a rabbit polyclonal antibody raised against CHIT1. It has been selected for its ability to recognize CHIT1 in immunohistochemical staining and western blotting.
Purification:	Antigen-specific affinity chromatography followed by Protein A affinity chromatography

## Target Details

Target:	Chitotriosidase 1 (CHIT1)
---------	---------------------------

## Target Details

Alternative Name: Chitinase 1 ([CHIT1 Products](#))

Background: CHI3, Chitotriosidase

## Application Details

Application Notes: Western blotting: 0.5-2 µg/mL  
Immunohistochemistry: 5-20 µg/mL  
Immunocytochemistry: 5-20 µg/mL  
Optimal working dilutions must be determined by end user.

Comment: The thermal stability is described by the loss rate. The loss rate was determined by accelerated thermal degradation test, that is, incubate the protein at 37°C for 48h, and no obvious degradation and precipitation were observed. The loss rate is less than 5% within the expiration date under appropriate storage condition.

Restrictions: For Research Use only

## Handling

Format: Liquid

Buffer: 0.01M PBS, pH 7.4, containing 0.05 % Proclin-300, 50 % glycerol.

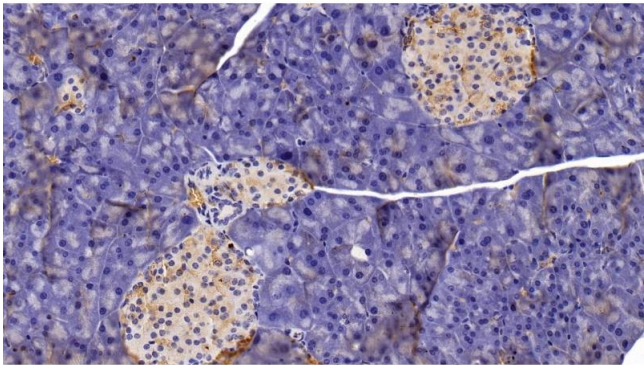
Preservative: ProClin

Precaution of Use: This product contains ProClin: a POISONOUS AND HAZARDOUS SUBSTANCE which should be handled by trained staff only.

Storage: 4 °C,-20 °C

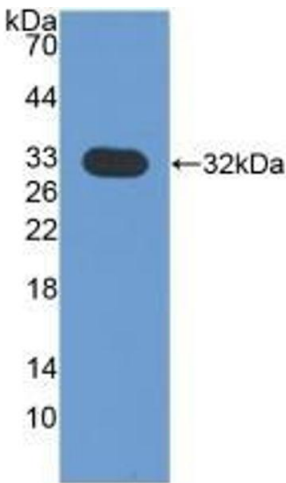
Storage Comment: Store at 4°C for frequent use. Stored at -20°C in a manual defrost freezer for two year without detectable loss of activity. Avoid repeated freeze-thaw cycles.

Expiry Date: 24 months



Immunohistochemistry

**Image 1.** Detection of CHIT1 in Mouse Pancreas Tissue using Polyclonal Antibody to Chitinase 1 (CHIT1)



Western Blotting

**Image 2.** Detection of Recombinant CHIT1, Mouse using Polyclonal Antibody to Chitinase 1 (CHIT1)