

Datasheet for ABIN7429697
anti-CRH antibody (AA 40-195)

7 Images

[Go to Product page](#)

Overview

| | |
|----------------------|--|
| Quantity: | 100 µL |
| Target: | CRH |
| Binding Specificity: | AA 40-195 |
| Reactivity: | Human |
| Host: | Rabbit |
| Clonality: | Polyclonal |
| Conjugate: | This CRH antibody is un-conjugated |
| Application: | Western Blotting (WB), Immunohistochemistry (IHC), Immunoprecipitation (IP), Immunocytochemistry (ICC) |

Product Details

| | |
|-------------------|--|
| Purpose: | Polyclonal Antibody to Corticotropin Releasing Factor (CRF) |
| Immunogen: | Recombinant Corticotropin Releasing Factor (CRF) corresponding to His40~Gly195 (Accession # P06850) with N-terminal His and GST Tag |
| Isotype: | IgG |
| Specificity: | The antibody is a rabbit polyclonal antibody raised against CRF. It has been selected for its ability to recognize CRF in immunohistochemical staining and western blotting. |
| Cross-Reactivity: | Pig |
| Purification: | Antigen-specific affinity chromatography followed by Protein A affinity chromatography |

Target Details

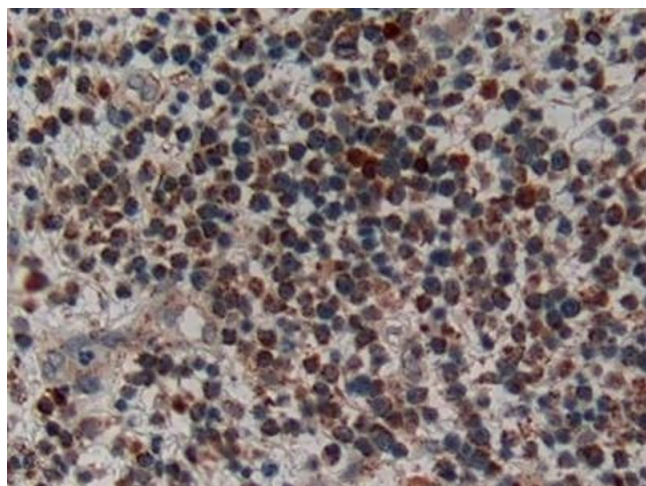
| | |
|-------------------|---|
| Target: | CRH |
| Alternative Name: | Corticotropin Releasing Factor (CRH Products) |
| Background: | CRH, Corticotropin Releasing Hormone, Corticoliberin |
| Pathways: | Positive Regulation of Peptide Hormone Secretion , Hormone Activity , Negative Regulation of Hormone Secretion , cAMP Metabolic Process , Myometrial Relaxation and Contraction , Feeding Behaviour |

Application Details

| | |
|--------------------|---|
| Application Notes: | Western blotting: 0.5-2 µg/mL 1:500-2000 Immunohistochemistry: 5-20 µg/mL 1:50-200 Immunocytochemistry: 5-20 µg/mL 1:50-200 Optimal working dilutions must be determined by end user. |
| Comment: | The thermal stability is described by the loss rate. The loss rate was determined by accelerated thermal degradation test, that is, incubate the protein at 37°C for 48h, and no obvious degradation and precipitation were observed. The loss rate is less than 5% within the expiration date under appropriate storage condition. |
| Restrictions: | For Research Use only |

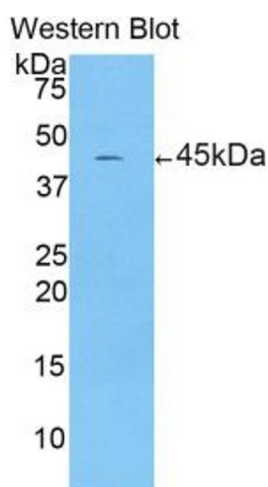
Handling

| | |
|--------------------|---|
| Format: | Liquid |
| Buffer: | 0.01M PBS, pH 7.4, containing 0.05 % Proclin-300, 50 % glycerol. |
| Preservative: | ProClin |
| Precaution of Use: | This product contains ProClin: a POISONOUS AND HAZARDOUS SUBSTANCE which should be handled by trained staff only. |
| Storage: | 4 °C, -20 °C |
| Storage Comment: | Store at 4°C for frequent use. Stored at -20°C in a manual defrost freezer for two year without detectable loss of activity. Avoid repeated freeze-thaw cycles. |
| Expiry Date: | 24 months |



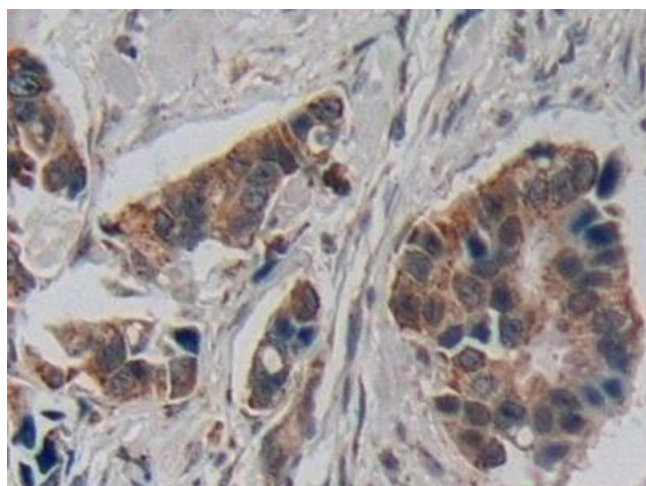
Immunohistochemistry

Image 1. Detection of CRF in Human Skin cancer Tissue using Polyclonal Antibody to Corticotropin Releasing Factor (CRF)



Western Blotting

Image 2. Detection of Recombinant CRH, Human using Polyclonal Antibody to Corticotropin Releasing Factor (CRF)



Immunohistochemistry

Image 3. Detection of CRF in Human Breast cancer Tissue using Polyclonal Antibody to Corticotropin Releasing Factor (CRF)

Please check the [product details page](#) for more images. Overall 7 images are available for ABIN7429697.