

Datasheet for ABIN7429700  
**anti-CRH antibody (AA 28-160)**[Go to Product page](#)

## 1 Image

## Overview

Quantity:	100 µL
Target:	CRH
Binding Specificity:	AA 28-160
Reactivity:	Mouse
Host:	Rabbit
Clonality:	Polyclonal
Conjugate:	This CRH antibody is un-conjugated
Application:	Western Blotting (WB), Immunohistochemistry (IHC), Immunoprecipitation (IP), Immunocytochemistry (ICC)

## Product Details

Purpose:	Polyclonal Antibody to Corticotropin Releasing Factor (CRF)
Immunogen:	Recombinant Corticotropin Releasing Factor (CRF) corresponding to Arg28~Arg160 with N-terminal His Tag
Isotype:	IgG
Specificity:	The antibody is a rabbit polyclonal antibody raised against CRF. It has been selected for its ability to recognize CRF in immunohistochemical staining and western blotting.
Cross-Reactivity:	Rat
Purification:	Antigen-specific affinity chromatography followed by Protein A affinity chromatography

## Target Details

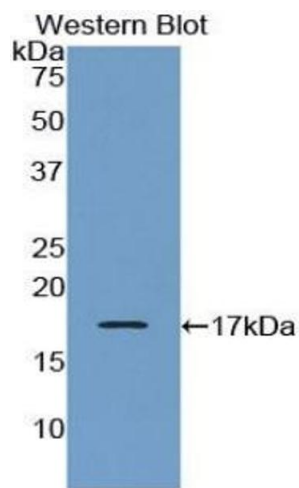
Target:	CRH
Alternative Name:	Corticotropin Releasing Factor ( <a href="#">CRH Products</a> )
Background:	CRH, Corticotropin Releasing Hormone, Corticoliberin
Pathways:	<a href="#">Positive Regulation of Peptide Hormone Secretion</a> , <a href="#">Hormone Activity</a> , <a href="#">Negative Regulation of Hormone Secretion</a> , <a href="#">cAMP Metabolic Process</a> , <a href="#">Myometrial Relaxation and Contraction</a> , <a href="#">Feeding Behaviour</a>

## Application Details

Application Notes:	Western blotting: 0.5-2 µg/mL Immunohistochemistry: 5-20 µg/mL Immunocytochemistry: 5-20 µg/mL Optimal working dilutions must be determined by end user.
Comment:	The thermal stability is described by the loss rate. The loss rate was determined by accelerated thermal degradation test, that is, incubate the protein at 37°C for 48h, and no obvious degradation and precipitation were observed. The loss rate is less than 5% within the expiration date under appropriate storage condition.
Restrictions:	For Research Use only

## Handling

Format:	Liquid
Buffer:	0.01M PBS, pH 7.4, containing 0.05 % Proclin-300, 50 % glycerol.
Preservative:	ProClin
Precaution of Use:	This product contains ProClin: a POISONOUS AND HAZARDOUS SUBSTANCE which should be handled by trained staff only.
Storage:	4 °C, -20 °C
Storage Comment:	Store at 4°C for frequent use. Stored at -20°C in a manual defrost freezer for two year without detectable loss of activity. Avoid repeated freeze-thaw cycles.
Expiry Date:	24 months



Western Blotting

**Image 1.** Detection of Recombinant CRH, Mouse using Polyclonal Antibody to Corticotropin Releasing Factor (CRF)