



[Go to Product page](#)

Datasheet for ABIN7429703
anti-CRH antibody (AA 39-187)

3 Images

Overview

Quantity:	100 µL
Target:	CRH
Binding Specificity:	AA 39-187
Reactivity:	Rat
Host:	Rabbit
Clonality:	Polyclonal
Conjugate:	This CRH antibody is un-conjugated
Application:	Western Blotting (WB), Immunohistochemistry (IHC), Immunoprecipitation (IP), Immunocytochemistry (ICC)

Product Details

Purpose:	Polyclonal Antibody to Corticotropin Releasing Factor (CRF)
Immunogen:	Recombinant Corticotropin Releasing Factor (CRF) corresponding to Gln39~Lys187 with N-terminal His Tag
Isotype:	IgG
Specificity:	The antibody is a rabbit polyclonal antibody raised against CRF. It has been selected for its ability to recognize CRF in immunohistochemical staining and western blotting.
Cross-Reactivity:	Mouse
Purification:	Antigen-specific affinity chromatography followed by Protein A affinity chromatography

Target Details

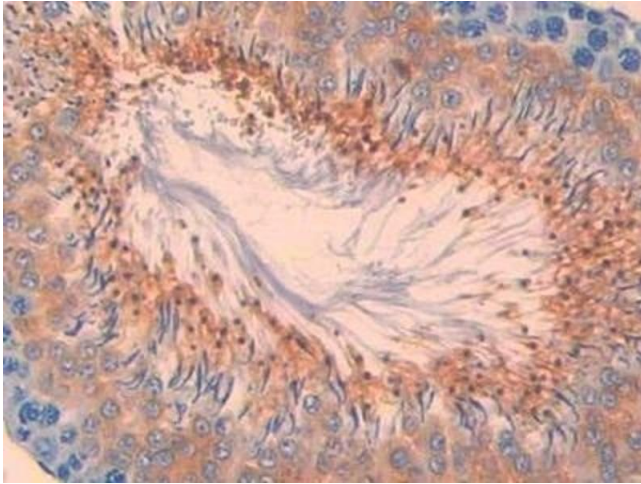
Target:	CRH
Alternative Name:	Corticotropin Releasing Factor (CRH Products)
Background:	CRH, Corticotropin Releasing Hormone, Corticoliberin
Pathways:	Positive Regulation of Peptide Hormone Secretion , Hormone Activity , Negative Regulation of Hormone Secretion , cAMP Metabolic Process , Myometrial Relaxation and Contraction , Feeding Behaviour

Application Details

Application Notes:	Western blotting: 0.5-2 µg/mL Immunocytochemistry in formalin fixed cells: 5-20 µg/mL Immunohistochemistry in formalin fixed frozen section: 5-20 µg/mL Immunohistochemistry in paraffin section: 5-20 µg/mL Enzyme-linked Immunosorbent Assay: 0.05-2 µg/mL Optimal working dilutions must be determined by end user.
Comment:	The thermal stability is described by the loss rate. The loss rate was determined by accelerated thermal degradation test, that is, incubate the protein at 37°C for 48h, and no obvious degradation and precipitation were observed. The loss rate is less than 5% within the expiration date under appropriate storage condition.
Restrictions:	For Research Use only

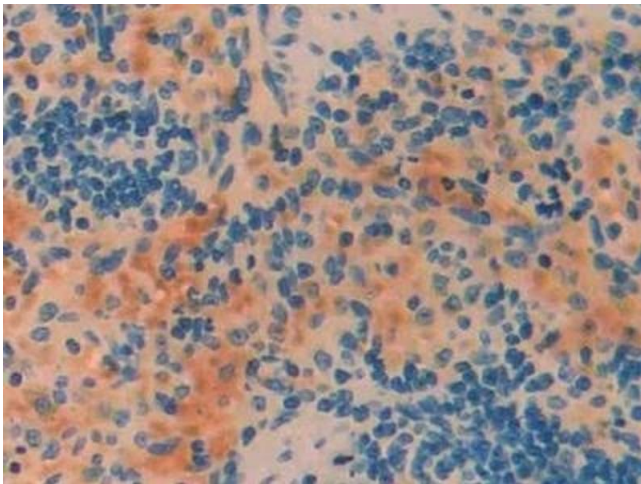
Handling

Format:	Liquid
Buffer:	PBS, pH 7.4, containing 0.02 % Sodium azide, 50 % glycerol.
Preservative:	Sodium azide
Precaution of Use:	This product contains Sodium azide: a POISONOUS AND HAZARDOUS SUBSTANCE which should be handled by trained staff only.
Storage:	4 °C, -20 °C
Storage Comment:	Store at 4°C for frequent use. Stored at -20°C in a manual defrost freezer for two year without detectable loss of activity. Avoid repeated freeze-thaw cycles.
Expiry Date:	24 months



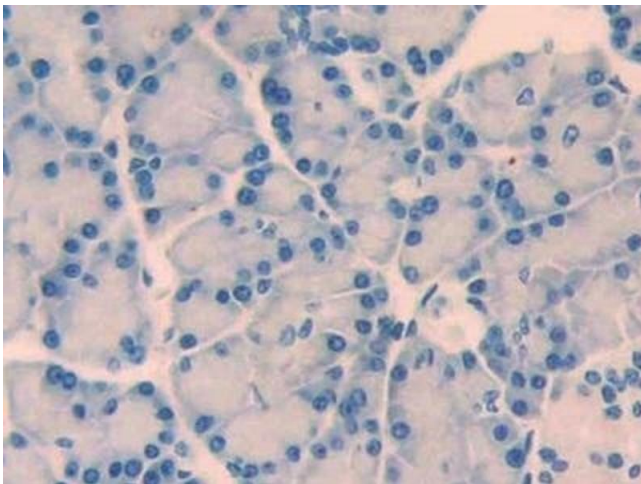
Immunohistochemistry

Image 1. Detection of CRF in Rat Testis Tissue using Polyclonal Antibody to Corticotropin Releasing Factor (CRF)



Immunohistochemistry

Image 2. Detection of CRF in Rat Spleen Tissue using Polyclonal Antibody to Corticotropin Releasing Factor (CRF)



Immunohistochemistry

Image 3. Detection of CRF in Rat Pancreas Tissue using Polyclonal Antibody to Corticotropin Releasing Factor (CRF)